

SUBJECT: Award of Bid No. 21-125B, Supply and Install Furniture, Fixtures and Equipment (FFE) at Station 6-1 - Phase II to Capital Office for the contract amount of \$141,765.47.

AGENDA OF: March 2, 2021

ASSEMBLY ACTION:

approved under the consent agenda. KBT 03 02.21

MANAGER RECOMMENDATION: Present to the Assembly for consideration.

APPROVED BY MICHAEL BROWN, BOROUGH MANAGER:

MB

| Route To: | Department/Individual | Initials | Remarks |
|-----------|-----------------------|--------------------|--------------------|
| | Purchasing Officer | <i>[Signature]</i> | |
| | Public Works Director | <i>[Signature]</i> | <i>17 Feb 2021</i> |
| | Finance Director | <i>[Signature]</i> | |
| | Borough Attorney | <i>[Signature]</i> | |
| | Borough Clerk | <i>[Signature]</i> | |

ATTACHMENT (S): Fiscal Note: Yes X No _____
Analysis Sheet: (1pg)
FFE Specifications: (32pp)

SUMMARY STATEMENT: On December 23, 2020 the Matanuska-Susitna Borough Purchasing Division issued a solicitation requesting bids from qualified contractors to provide all supervision, labor, tools and equipment necessary to supply and install FFE as part of the Matanuska-Susitna Borough's Public Safety Station 6-1 renovation and addition project. Goods purchased will support the Department of Emergency Services in Assembly District #4.

In response to the advertisement, three (3) bids were received. Award recommendation is being made to the only responsive and responsible bidder.

Final completion of this project is anticipated to be May 30, 2021.

In accordance with MSB 3.08.170(B), Administration requests authority to modify the resulting contract completion date by 30 days for unforeseen circumstances.

The Project Management Division of the Public Works Department will be administering the contract.

RECOMMENDATION OF ADMINISTRATION: Award of BID NO. 21-125B, SUPPLY AND INSTALL FURNITURE, FIXTURES AND EQUIPMENT AT STATION 6-1 - PHASE II to CAPITAL OFFICE for the contract amount of ONE HUNDRED FORTY ONE THOUSAND SEVEN HUNDRED SIXTY FIVE AND 47/100 DOLLARS (\$141,765.47) .

MATANUSKA-SUSITNA BOROUGH
FISCAL NOTE

Agenda Date: March 2, 2021

SUBJECT: Award of Bid No. 21-125B, Supply and Install Furniture, Fixtures and Equipment (FFE) at Station 6-1 – Phase II to Capital Office for the contract amount of \$141,765.47.

ORIGINATOR: Purchasing

| | |
|--|--|
| FISCAL ACTION (TO BE COMPLETED BY FINANCE) | FISCAL IMPACT <u>(YES)</u> NO |
| AMOUNT REQUESTED <u>\$141,765.47</u> | FUNDING SOURCE <u>Fire Service Cap. Projects</u> |
| FROM ACCOUNT # <u>405.000.000 4x1.2xx</u> | PROJECT # <u>45066-6600-6602-8701001.90</u> <u>10140-2100-2106-871,163.57</u> |
| TO ACCOUNT : | PROJECT # |
| VERIFIED BY: <u>Linn W. L.</u> | CERTIFIED BY: |
| DATE: <u>2-17-21</u> | DATE: |

EXPENDITURES/REVENUES:

(Thousands of Dollars)

| OPERATING | FY2021 | FY2022 | FY2023 | FY2024 | FY2025 | FY2026 |
|--------------------|--------|--------|--------|--------|--------|--------|
| Personnel Services | | | | | | |
| Travel | | | | | | |
| Contractual | | | | | | |
| Supplies | | | | | | |
| Equipment | | | | | | |
| Land/Structures | | | | | | |
| Grants, Claims | | | | | | |
| Miscellaneous | | | | | | |
| TOTAL OPERATING | | | | | | |

| | | | | | | |
|---------|--------------|--|--|--|--|--|
| CAPITAL | <u>141.8</u> | | | | | |
|---------|--------------|--|--|--|--|--|

| | | | | | | |
|---------|--|--|--|--|--|--|
| REVENUE | | | | | | |
|---------|--|--|--|--|--|--|

FUNDING:

(Thousands of Dollars)

| | | | | | | |
|---------------------|--------------|--|--|--|--|--|
| General Fund | | | | | | |
| State/Federal Funds | | | | | | |
| Other | <u>141.8</u> | | | | | |
| TOTAL | <u>141.8</u> | | | | | |

POSITIONS:

| | | | | | | |
|-----------|--|--|--|--|--|--|
| Full-Time | | | | | | |
| Part-Time | | | | | | |
| Temporary | | | | | | |

ANALYSIS: (Attach a separate page if necessary)

PREPARED BY: _____ PHONE: _____
 DEPARTMENT: Chieftain's Office DATE: _____
 APPROVED BY: _____ DATE: 2/18/21

MATANUSKA-SUSITNA BOROUGH PURCHASING
21-125B
Supply & Install FFE at Station 6-1 – Phase II

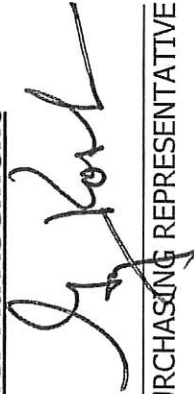
ANALYSIS SHEET

| BIDDER | | ARCTIC OFFICE | | BINW AUSA | | CAPITAL OFFICE | |
|------------------------|---|---------------|----------------|-----------|-----------------|----------------|----------------|
| Signed Bid Form | | OK | | OK | | OK | |
| Descriptive Literature | | OK | | OK | | OK | |
| Bid Item | Description | Quantity | Bid Price | Quantity | Bid Price | Quantity | Bid Price |
| 1. | Procure, supply and install all furnishings described and shown in the furniture specifications and cut sheets. | Lump Sum | * \$ 75,884.00 | Lump Sum | * \$ 109,434.22 | Lump Sum | \$ 141,765.47. |

All Bids Taken Under Advisement



PURCHASING OFFICER

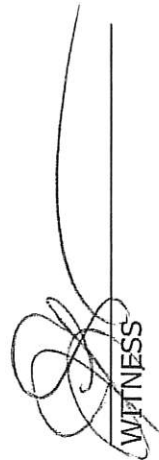


PURCHASING REPRESENTATIVE

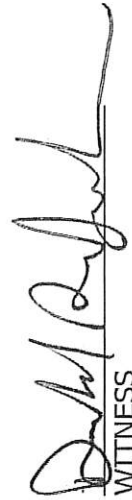
PROJECT MANAGER

1/19/21

DATE



WITNESS



WITNESS

* Non-Response

SECTION 01 11 00

SUMMARY OF WORK

PART 1 - GENERAL

1.1 RELATED DOCUMENTS

- A. Drawings and technical specifications apply to this Section.

1.2 SUMMARY

- A. This Section includes the following:
 - 1. Work included in the bid package.

1.3 PROJECT INFORMATION

- A. Project Identification:

Mat-Su Borough Public Safety Building 6-1 Renovation and Addition

- 1. Project Location: 101 West Swanson Ave, Wasilla, Alaska 99654

- B. Owner:

Matanuska-Susitna Borough, 350 East Dahlia Avenue, Palmer, Alaska

- 1. Owner's Representative: Mr. Robert Scott, Project Manager, 533 East Fireweed, Palmer, Alaska

- C. Architect: Wolf Architecture, 625 South Cobb, Suite 200, Palmer, Alaska

1.4 WORK COVERED BY CONTRACT DOCUMENTS

- A. The Work includes the following procuring, supplying, and installing all furnishings described and shown in the furniture specification and cut sheets.

1.5 RELATED WORK BY OWNER OR OTHERS

- A. Contractor's Responsibilities:

- 1. Designate delivery date for each portion of the Work in the Progress Schedule.

SUMMARY
01 11 00-1

2. Storage of products if requested.
3. Coordinate installation with the General Contractor.

1.15 TYPE OF CONTRACT

- A. Lump Sum single bid contract.

1.16 SPECIFICATION FORMATS AND CONVENTIONS

- A. Specification Format: The Specifications are organized into Divisions and Sections using the 16-division format and CSI/CSC's "MasterFormat" numbering system.
 1. Section Identification: The Specifications use Section numbers and titles to help cross-referencing in the Contract Documents. Sections in the Project Manual are in numeric sequence; however, the sequence is incomplete because all available Section numbers are not used. Consult the table of contents at the beginning of the Project Manual to determine numbers and names of Sections in the Contract Documents.
 2. Division 1: Sections in Division 1 govern the execution of the Work of all Sections in the Specifications.
- B. Specification Content: The Specifications use certain conventions for the style of language and the intended meaning of certain terms, words, and phrases when used in particular situations. These conventions are as follows:
 1. Abbreviated Language: Language used in the Specifications and other Contract Documents is abbreviated. Words and meanings shall be interpreted as appropriate. Words implied, but not stated, shall be inferred as the sense requires. Singular words shall be interpreted as plural, and plural words shall be interpreted as singular where applicable as the context of the Contract Documents indicates.
 2. Imperative mood and streamlined language are generally used in the Specifications. Requirements expressed in the imperative mood are to be performed by Contractor. Occasionally, the indicative or subjunctive mood may be used in the Section Text for clarity to describe responsibilities that must be fulfilled indirectly by Contractor or by others when so noted.
 - a. The words "shall," "shall be," or "shall comply with," depending on the context, are implied where a colon (:) is used within a sentence or phrase.

PART 2 - PRODUCTS (Not Used)

PART 3 - EXECUTION (Not Used)

END OF SECTION 01 10 00

SUMMARY
01 11 00-2

MSB Station 6-1 Renovation and Addition

Wasilla, Alaska

4 December 2020

FURNITURE SPECIFICATIONS INDEX

| SPEC SHEETS | | | TOTAL |
|-------------|-----------|------------------------------------|----------|
| PAGE NO. | PLAN CODE | ITEM DESCRIPTION | QUANTITY |
| 1 | F13 | TV Console | 1 |
| 2 | F6 | Side Table | 6 |
| 3 | F15 | Dining Stool | 5 |
| 4 | F10 | Large Dining Table | 2 |
| 5 | F14-1 | Dining Chair 1 | 16 |
| 6 | F9 | Small Dining Table | 4 |
| 7 | F14-2 | Dining Chair 2 | 16 |
| 8 | F20-1 | Workstation 1 | 1 |
| 9 | F29 | File Cabinet BBF | 1 |
| 10 | F30 | Lateral File Cabinet | 1 |
| 11 | F11-1 | Meeting Table 1 | 1 |
| 12 | F23 | Bookcase | 2 |
| 13 | F20-2 | Workstation 2 | 2 |
| 14 | F20-3L | Workstation 3L (Left-Hand Return) | 4 |
| 15 | F20-3R | Workstation 3R (Right-Hand Return) | 2 |
| 16 | F16 | Task Chair 1 | 13 |
| 17 | F17 | Task Chair 2 | 11 |
| 18 | F18 | Side Chair | 8 |
| 19 | F11-2 | Meeting Table 2 | 1 |
| 20 | F19 | Lobby Bench | 2* |
| 21 | F27 | Adjustable Height Foot Rest | 1 |
| 22 | F22-1 | Lateral Files | 3 |
| 23 | F22-2 | Lateral Files with Storage Cabinet | 2 |
| 24 | F25 | Mobile Pedestal File BBF | 11 |
| 25 | F26 | Mobile Pedestal File FF | 8 |
| 26 | F31 | Metal Bench | 1 |
| 27 | F28 | Under-Mount CPU Sling | 24 |

* May be substituted with a single, wider unit - see page 20.

NOTE: In case of quantity discrepancies, drawings shall prevail.

FURNITURE SPECIFICATION SHEET

MSB Station 6-1 Renovation and Addition
Wasilla, Alaska

GENERAL INFORMATION

Item Code: F13
Item Description: TV Console
Total Units: 1
Location: Day Room

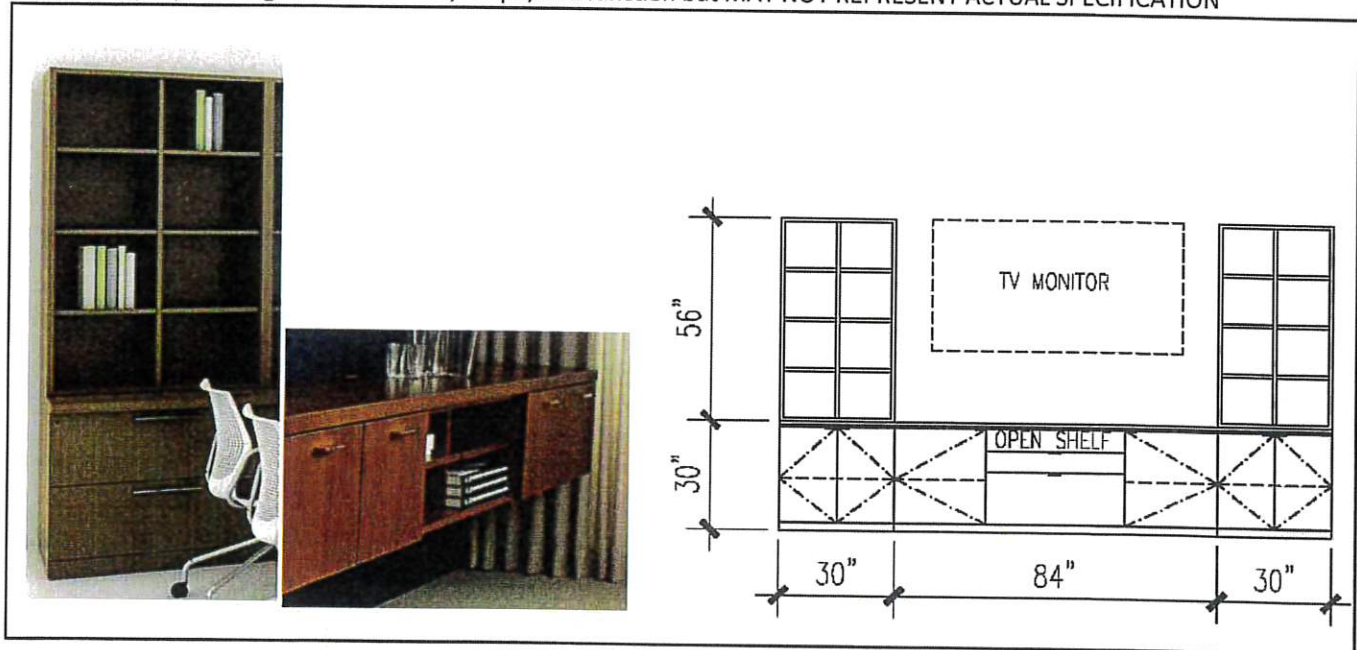
BASIS OF DESIGN

Manufacturer: Knoll
Series or Model: Reff Profiles
Dimensions: 144"W x 19"D x 86"H overall
Base Cabinet: 19"D
Upper Cabinet: 15"D
Counter: 19"D

Finishes / Materials: plastic laminate
satin finish silver pulls

Features: flushed base
matching common top
bar style pulls

Images may represent general materials, shape, and function but MAY NOT REPRESENT ACTUAL SPECIFICATION



| ACCEPTABLE PRODUCTS | MANUFACTURER | SERIES or MODEL |
|-----------------------|---------------|-----------------------|
| Acceptable Alternate: | Steelcase | Elective Elements |
| Acceptable Alternate: | Herman Miller | Canvas Private Office |
| Acceptable Alternate: | Nucraft | Cambium |

NOTE: In order to be considered responsive, alternates must be submitted substantially similar in size, finishes, materials, features, construction, aesthetics, and warranty. Submittals must include comparison data with the Basis of Design specification as well as manufacturer's literature supporting equal or better product claim.

FURNITURE SPECIFICATION SHEET

MSB Station 6-1 Renovation and Addition
Wasilla, Alaska

GENERAL INFORMATION

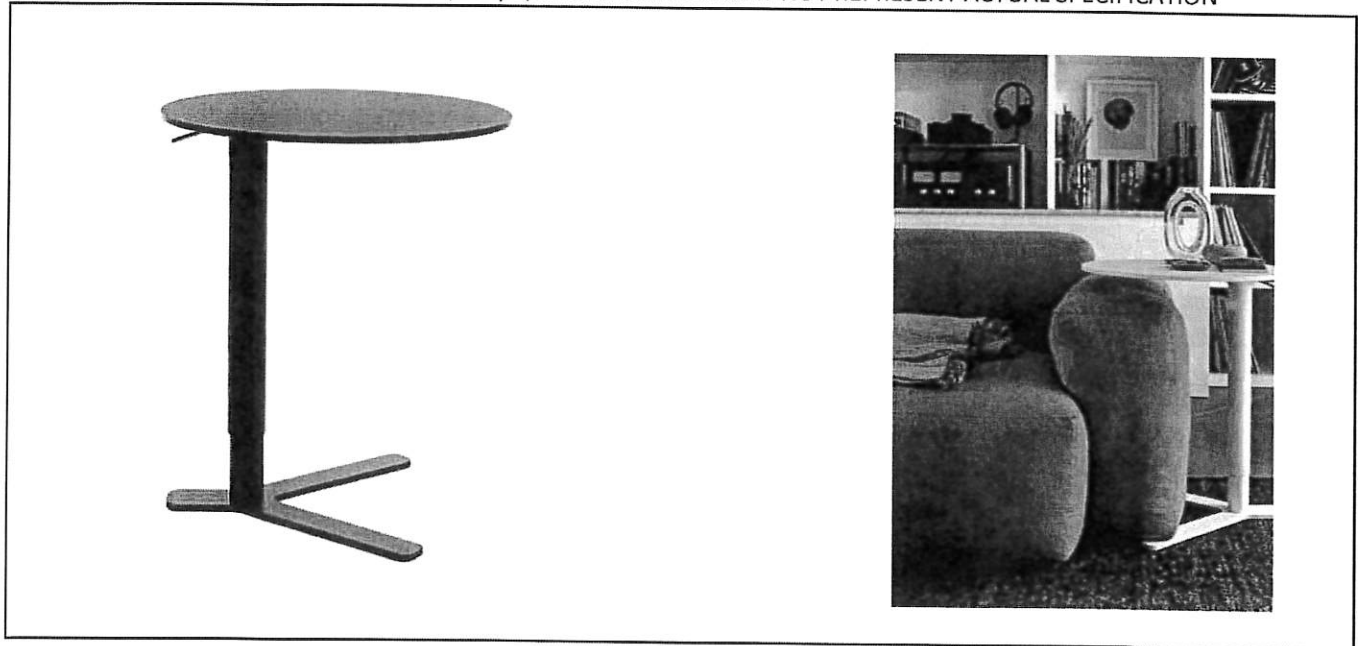
Item Code: F6
Item Description: Side Table
Total Units: 6
Location: Day Room

BASIS OF DESIGN

Manufacturer: Lapalma
Retailer: dwr.com
Series or Model: Yo Side Table
Dimensions: 19.75"DIA, height adjustable base
Finishes / Materials: Fenix high pressure laminate top
powder-coated steel base

Features: height adjustable from 22" to 27.5"
table height must clear 27"

Images may represent general materials, shape, and function but MAY NOT REPRESENT ACTUAL SPECIFICATION



NOTE: In order to be considered responsive, alternates must be submitted substantially similar in size, finishes, materials, features, construction, aesthetics, and warranty. Submittals must include comparison data with the Basis of Design specification as well as manufacturer's literature supporting equal or better product claim.

FURNITURE SPECIFICATION SHEET

MSB Station 6-1 Renovation and Addition
Wasilla, Alaska

GENERAL INFORMATION

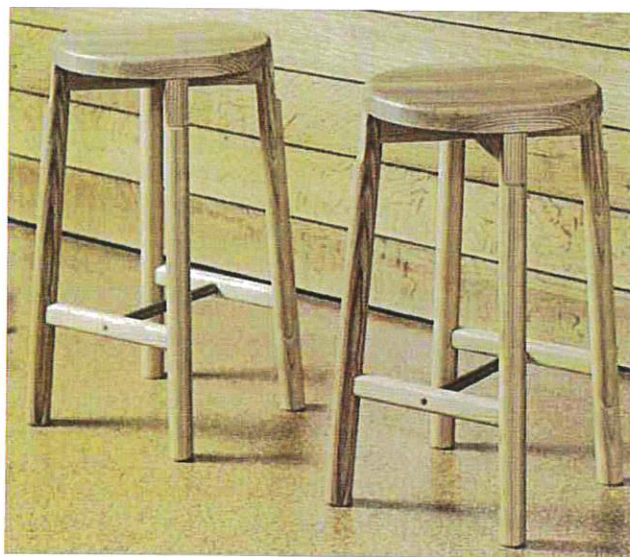
Item Code: F15
Item Description: Dining Stool
Total Units: 5
Location: Kitchen

BASIS OF DESIGN

Manufacturer: Corral
Series or Model: Barn Counter Stool
Dimensions: 14.5"W x 14.5"D x 24.5"H
Finishes / Materials: solid ash

Features:

Images may represent general materials, shape, and function but MAY NOT REPRESENT ACTUAL SPECIFICATION



NOTE: In order to be considered responsive, alternates must be submitted substantially similar in size, finishes, materials, features, construction, aesthetics, and warranty. Submittals must include comparison data with the Basis of Design specification as well as manufacturer's literature supporting equal or better product claim.

FURNITURE SPECIFICATION SHEET

MSB Station 6-1 Renovation and Addition
Wasilla, Alaska

GENERAL INFORMATION

Item Code: F10
Item Description: Large Dining Table
Total Units: 2
Location: Dining Area

BASIS OF DESIGN

Manufacturer: Corral
Series or Model: Garden Table
Dimensions: 102"W x 38"D x 29"H
Finishes / Materials: solid white oak top
black powder-coated base
Features: all tables are made to order
108" is a custom dimension

Images may represent general materials, shape, and function but MAY NOT REPRESENT ACTUAL SPECIFICATION



NOTE: In order to be considered responsive, alternates must be submitted substantially similar in size, finishes, materials, features, construction, aesthetics, and warranty. Submittals must include comparison data with the Basis of Design specification as well as manufacturer's literature supporting equal or better product claim.

FURNITURE SPECIFICATION SHEET

MSB Station 6-1 Renovation and Addition
Wasilla, Alaska

GENERAL INFORMATION

Item Code: F14-1
Item Description: Dining Chair 1
Total Units: 16
Location: Dining Area

BASIS OF DESIGN

Manufacturer: Corral
Series or Model: Linden Side Chair
Dimensions: 19.5"W x 19"D x 32"H
Finishes / Materials: solid white oak frame
bent oak plywood seat and backrest

Features:

Images may represent general materials, shape, and function but MAY NOT REPRESENT ACTUAL SPECIFICATION



NOTE: In order to be considered responsive, alternates must be submitted substantially similar in size, finishes, materials, features, construction, aesthetics, and warranty. Submittals must include comparison data with the Basis of Design specification as well as manufacturer's literature supporting equal or better product claim.

FURNITURE SPECIFICATION SHEET

MSB Station 6-1 Renovation and Addition
Wasilla, Alaska

GENERAL INFORMATION

Item Code: F9
Item Description: Small Dining Table
Total Units: 4
Location: Day Room Annex
Admin Area Break Room

BASIS OF DESIGN

Manufacturer: Knoll
Series or Model: Islands X-Base Table Soft Square
Dimensions: 30"W x 30"D x 29"H
Finishes / Materials: plastic laminate work surface
black powder-coat column and base
Features: x-base
glides

Images may represent general materials, shape, and function but MAY NOT REPRESENT ACTUAL SPECIFICATION



ACCEPTABLE PRODUCTS

MANUFACTURER

SERIES or MODEL

| | | |
|-----------------------|---------------|---------------------------|
| Acceptable Alternate: | Steelcase | Freestanding X-Base Table |
| Acceptable Alternate: | Herman Miller | Everywhere Table Square |
| Acceptable Alternate: | Nucraft | Myne Meeting Table X-Base |

NOTE: In order to be considered responsive, alternates must be submitted substantially similar in size, finishes, materials, features, construction, aesthetics, and warranty. Submittals must include comparison data with the Basis of Design specification as well as manufacturer's literature supporting equal or better product claim.

FURNITURE SPECIFICATION SHEET

MSB Station 6-1 Renovation and Addition
Wasilla, Alaska

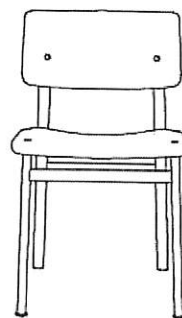
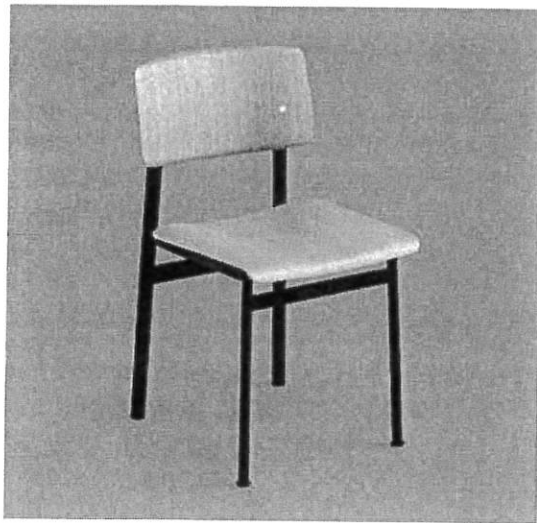
GENERAL INFORMATION

Item Code: F14-2
Item Description: Dining Chair 2
Total Units: 16
Location: Day Room Annex
Admin Area Break Room

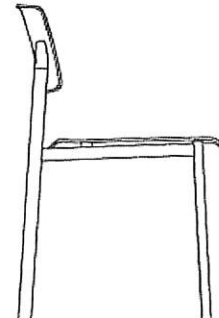
BASIS OF DESIGN

Manufacturer: Knoll Muuto
Series or Model: Loft Chair
Dimensions: 16.7"W x 19"D x 31"H x 18"SH
Finishes / Materials: Natural Finish on Oak - Shell
Black Powder Coated Steel - Frame
Features: width is critical due to space constraint

Images may represent general materials, shape, and function but MAY NOT REPRESENT ACTUAL SPECIFICATION



42,4 cm / 16.7"



48 cm / 19"

78,5 cm / 31"
SH 46 cm / 18"

NOTE: In order to be considered responsive, alternates must be submitted substantially similar in size, finishes, materials, features, construction, aesthetics, and warranty. Submittals must include comparison data with the Basis of Design specification as well as manufacturer's literature supporting equal or better product claim.

FURNITURE SPECIFICATION SHEET

MSB Station 6-1 Renovation and Addition
Wasilla, Alaska

GENERAL INFORMATION

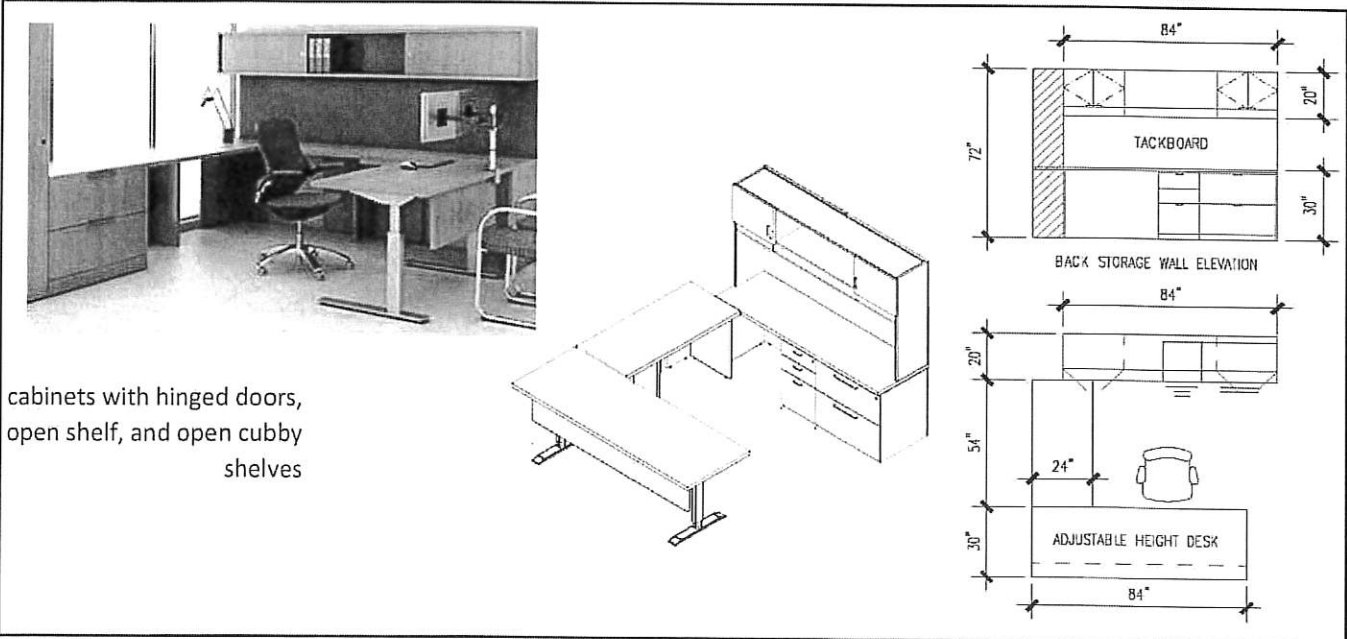
Item Code: F20-1
Item Description: Work Station 1
Total Units: 1
Location: Chief Office

NOTE: All work surfaces, end panels, and storage unit exterior surfaces in work stations, open offices, and private offices must be from a single manufacturer's product line or, at a minimum, have identical plastic laminate finishes and pulls.

BASIS OF DESIGN

Manufacturer: Knoll
Series or Model: Reff Profiles
Dimensions: 84"W x 104"D overall footprint
Finishes / Materials: plastic laminate work surfaces
plastic laminate cabinets
plastic laminate door/drawer fronts
powder-coated steel supports
plastic laminate modesty panel
Features: 84"W x 30"D electric height adj. desk
wall-mounted overhead cabinets
tackboard from work surface to OH cabs
bar pulls

Images may represent general materials, shape, and function but MAY NOT REPRESENT ACTUAL SPECIFICATION



| ACCEPTABLE PRODUCTS | MANUFACTURER | SERIES or MODEL |
|---------------------|--------------|-----------------|
|---------------------|--------------|-----------------|

| | | |
|-----------------------|---------------|-----------------------|
| Acceptable Alternate: | Steelcase | Elective Elements |
| Acceptable Alternate: | Herman Miller | Canvas Private Office |
| Acceptable Alternate: | Nucraft | Cambium |

NOTE: In order to be considered responsive, alternates must be submitted substantially similar in size, finishes, materials, features, construction, aesthetics, and warranty. Submittals must include comparison data with the Basis of Design specification as well as manufacturer's literature supporting equal or better product claim.

FURNITURE SPECIFICATION SHEET

MSB Station 6-1 Renovation and Addition
Wasilla, Alaska

GENERAL INFORMATION

Item Code: F29
Item Description: File Cabinet BBF

Total Units: 1

Location: Chief Office

BASIS OF DESIGN

Manufacturer: Knoll
Series or Model: Reff Profiles

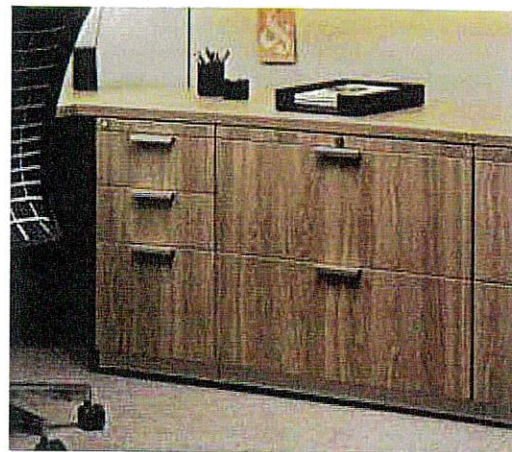
Dimensions: letter width

Finishes / Materials: plastic laminate

Features: box/box/file configuration
flushed base
bar pulls
locks keyed per work station

NOTE: All work surfaces, end panels, and storage unit exterior surfaces in work stations, open offices, and private offices must be from a single manufacturer's product line or, at a minimum, have identical plastic laminate finishes and pulls.

Images may represent general materials, shape, and function but MAY NOT REPRESENT ACTUAL SPECIFICATION



| ACCEPTABLE PRODUCTS | MANUFACTURER | SERIES or MODEL |
|---------------------|--------------|-----------------|
|---------------------|--------------|-----------------|

| | | |
|-----------------------|---------------|-----------------------|
| Acceptable Alternate: | Steelcase | Elective Elements |
| Acceptable Alternate: | Herman Miller | Canvas Private Office |
| Acceptable Alternate: | Nucraft | Cambium |

NOTE: In order to be considered responsive, alternates must be submitted substantially similar in size, finishes, materials, features, construction, aesthetics, and warranty. Submittals must include comparison data with the Basis of Design specification as well as manufacturer's literature supporting equal or better product claim.

FURNITURE SPECIFICATION SHEET

MSB Station 6-1 Renovation and Addition
Wasilla, Alaska

GENERAL INFORMATION

Item Code: F30
Item Description: Lateral File Cabinet

Total Units: 1

Location: Chief Office

BASIS OF DESIGN

Manufacturer: Knoll
Series or Model: Reff Profiles

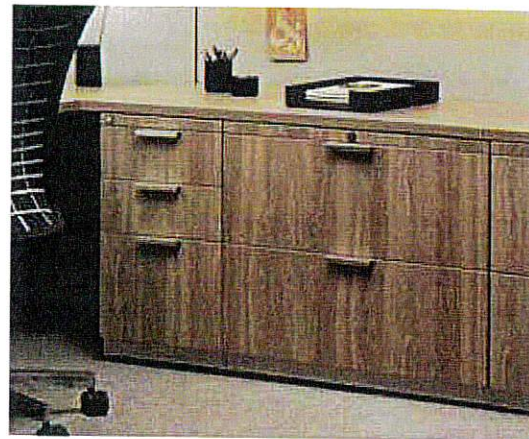
Dimensions: 30"W

Finishes / Materials: plastic laminate

Features: two lateral file drawers
flushed base
bar pulls
locks keyed per work station

NOTE: All work surfaces, end panels, and storage unit exterior surfaces in work stations, open offices, and private offices must be from a single manufacturer's product line or, at a minimum, have identical plastic laminate finishes and pulls.

Images may represent general materials, shape, and function but MAY NOT REPRESENT ACTUAL SPECIFICATION



| ACCEPTABLE PRODUCTS | MANUFACTURER | SERIES or MODEL |
|---------------------|--------------|-----------------|
|---------------------|--------------|-----------------|

| | | |
|-----------------------|---------------|-----------------------|
| Acceptable Alternate: | Steelcase | Elective Elements |
| Acceptable Alternate: | Herman Miller | Canvas Private Office |
| Acceptable Alternate: | Nucraft | Cambium |

NOTE: In order to be considered responsive, alternates must be submitted substantially similar in size, finishes, materials, features, construction, aesthetics, and warranty. Submittals must include comparison data with the Basis of Design specification as well as manufacturer's literature supporting equal or better product claim.

FURNITURE SPECIFICATION SHEET

MSB Station 6-1 Renovation and Addition
Wasilla, Alaska

GENERAL INFORMATION

Item Code: F11-1
Item Description: Meeting Table 1

Total Units: 1

Location: Chief Office

BASIS OF DESIGN

Manufacturer: Knoll
Series or Model: Islands X-Base Table Soft Square

Dimensions: 42"W x 42"D x 29"H

Finishes / Materials: plastic laminate work surface
polished aluminum column and base

Features: laminate to match Work Station 1
x-base
glides

NOTE: All work surfaces, end panels, and storage unit exterior surfaces in work stations, open offices, and private offices must be from a single manufacturer's product line or, at a minimum, have identical plastic laminate finishes and pulls.

Images may represent general materials, shape, and function but MAY NOT REPRESENT ACTUAL SPECIFICATION



ACCEPTABLE PRODUCTS

MANUFACTURER

SERIES or MODEL

| | | |
|-----------------------|---------------|---------------------------|
| Acceptable Alternate: | Steelcase | Freestanding X-Base Table |
| Acceptable Alternate: | Herman Miller | Everywhere Table Square |
| Acceptable Alternate: | Nucraft | Myne Meeting Table X-Base |

NOTE: In order to be considered responsive, alternates must be submitted substantially similar in size, finishes, materials, features, construction, aesthetics, and warranty. Submittals must include comparison data with the Basis of Design specification as well as manufacturer's literature supporting equal or better product claim.

FURNITURE SPECIFICATION SHEET

MSB Station 6-1 Renovation and Addition
Wasilla, Alaska

GENERAL INFORMATION

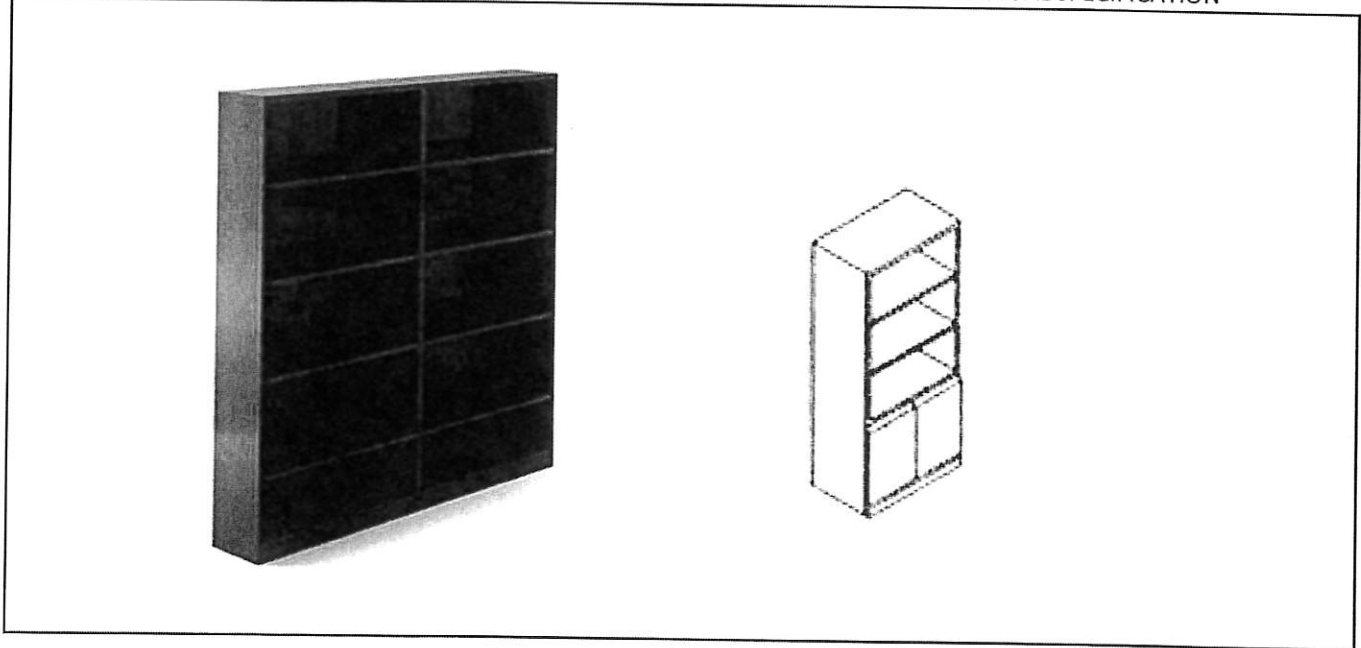
Item Code: F23
Item Description: Bookcase
Total Units: 2
Location: Chief Office

BASIS OF DESIGN

Manufacturer: Knoll
Series or Model: Reff Profiles Open Bookcase
Dimensions: 36"W x 15"D x 72"H
Finishes / Materials: plastic laminate exterior and interior
Features: flushed base
hinged doors at bottom two shelves

NOTE: All work surface tops and storage unit exterior surfaces in work stations, open offices, and private offices must be from a single manufacturer's product line or, at a minimum, have identical plastic laminate finishes and pulls.

Images may represent general materials, shape, and function but MAY NOT REPRESENT ACTUAL SPECIFICATION



| ACCEPTABLE PRODUCTS | MANUFACTURER | SERIES or MODEL |
|-----------------------|---------------|-----------------------|
| Acceptable Alternate: | Steelcase | Elective Elements |
| Acceptable Alternate: | Herman Miller | Canvas Private Office |
| Acceptable Alternate: | Nucraft | Cambium |

NOTE: In order to be considered responsive, alternates must be submitted substantially similar in size, finishes, materials, features, construction, aesthetics, and warranty. Submittals must include comparison data with the Basis of Design specification as well as manufacturer's literature supporting equal or better product claim.

FURNITURE SPECIFICATION SHEET

MSB Station 6-1 Renovation and Addition
Wasilla, Alaska

GENERAL INFORMATION

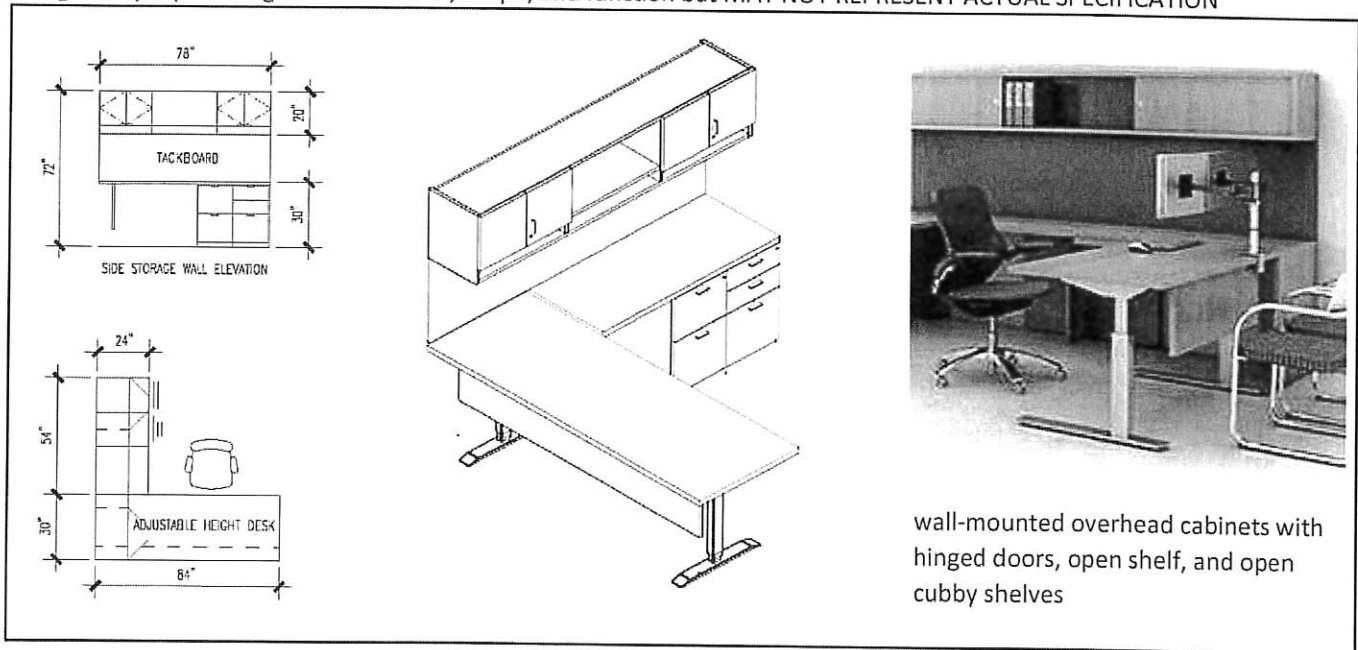
Item Code: F20-2
Item Description: Work Station 2
Total Units: 2
Location: Deputy Chief Office
Health & Safety Office

NOTE: All work surfaces, end panels, and storage unit exterior surfaces in work stations, open offices, and private offices must be from a single manufacturer's product line or, at a minimum, have identical plastic laminate finishes and pulls.

BASIS OF DESIGN

Manufacturer: Knoll
Series or Model: Reff Profiles
Dimensions: 84"W x 84"D overall footprint
Finishes / Materials: plastic laminate work surfaces
plastic laminate cabinets
plastic laminate door/drawer fronts
powder-coated steel supports
plastic laminate modesty panel
Features: 84"W x 30"D electric height adj. desk
wall-mounted overhead cabinets
tackboard from work surface to OH cabs
bar pulls

Images may represent general materials, shape, and function but MAY NOT REPRESENT ACTUAL SPECIFICATION



ACCEPTABLE PRODUCTS

MANUFACTURER

SERIES or MODEL

| | | |
|-----------------------|---------------|-----------------------|
| Acceptable Alternate: | Steelcase | Elective Elements |
| Acceptable Alternate: | Herman Miller | Canvas Private Office |
| Acceptable Alternate: | Nucraft | Cambium |

NOTE: In order to be considered responsive, alternates must be submitted substantially similar in size, finishes, materials, features, construction, aesthetics, and warranty. Submittals must include comparison data with the Basis of Design specification as well as manufacturer's literature supporting equal or better product claim.

FURNITURE SPECIFICATION SHEET

MSB Station 6-1 Renovation and Addition
Wasilla, Alaska

GENERAL INFORMATION

Item Code: F20-3L
Item Description: Work Station 3L
(Left-Hand Return)

Total Units: 4

Location: Captain Offices

NOTE: All work surfaces, end panels, and storage unit exterior surfaces in work stations, open offices, and private offices must be from a single manufacturer's product line or, at a minimum, have identical plastic laminate finishes and pulls.

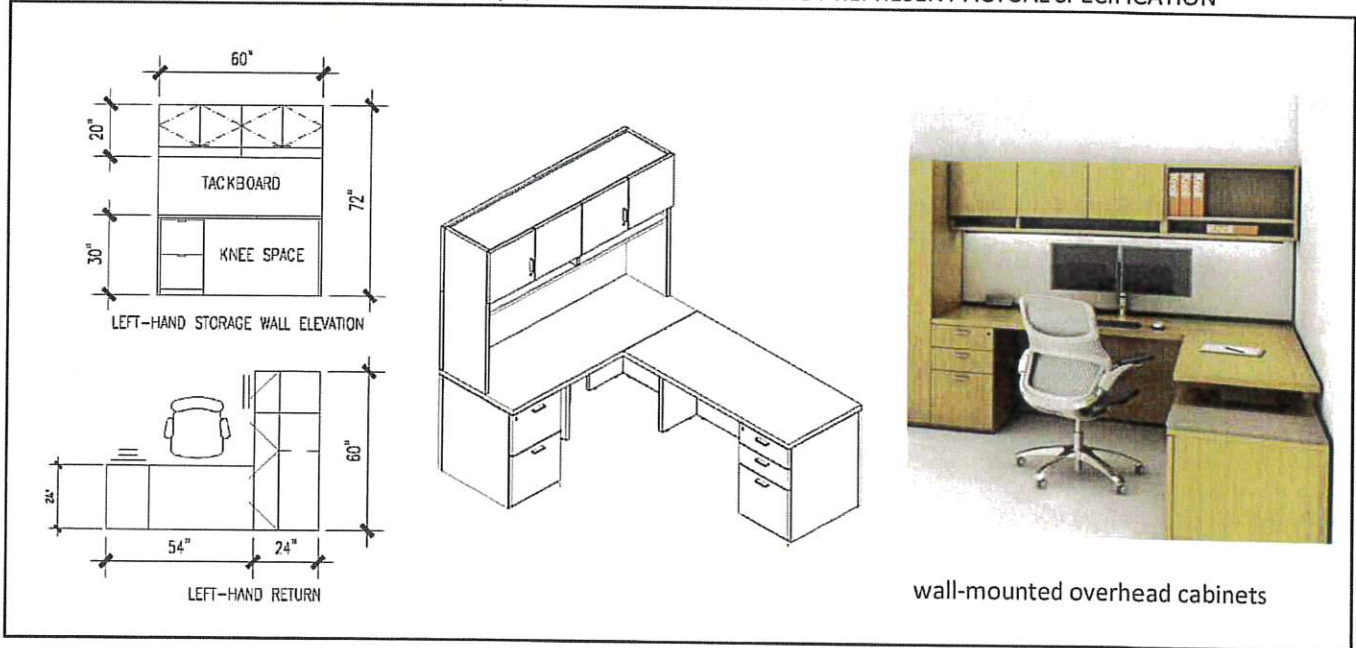
BASIS OF DESIGN

Manufacturer: Knoll
Series or Model: Reff Profiles
Dimensions: 78"W x 60"D overall footprint

Finishes / Materials: plastic laminate work surfaces
plastic laminate cabinets
plastic laminate door/drawer fronts

Features: wall-mounted overhead cabinets with
hinged doors & open cubby shelves
tackboard from work surface to OH cabs
full height/depth end panels
bar pulls

Images may represent general materials, shape, and function but MAY NOT REPRESENT ACTUAL SPECIFICATION



ACCEPTABLE PRODUCTS

MANUFACTURER

SERIES or MODEL

| | | |
|-----------------------|---------------|-----------------------|
| Acceptable Alternate: | Steelcase | Elective Elements |
| Acceptable Alternate: | Herman Miller | Canvas Private Office |
| Acceptable Alternate: | Nucraft | Cambium |

NOTE: In order to be considered responsive, alternates must be submitted substantially similar in size, finishes, materials, features, construction, aesthetics, and warranty. Submittals must include comparison data with the Basis of Design specification as well as manufacturer's literature supporting equal or better product claim.

FURNITURE SPECIFICATION SHEET

MSB Station 6-1 Renovation and Addition
Wasilla, Alaska

GENERAL INFORMATION

Item Code: F20-3R
Item Description: Work Station 3R
(Right-Hand Return)

Total Units: 2

Location: Captain Offices

NOTE: All work surfaces, end panels, and storage unit exterior surfaces in work stations, open offices, and private offices must be from a single manufacturer's product line or, at a minimum, have identical plastic laminate finishes and pulls.

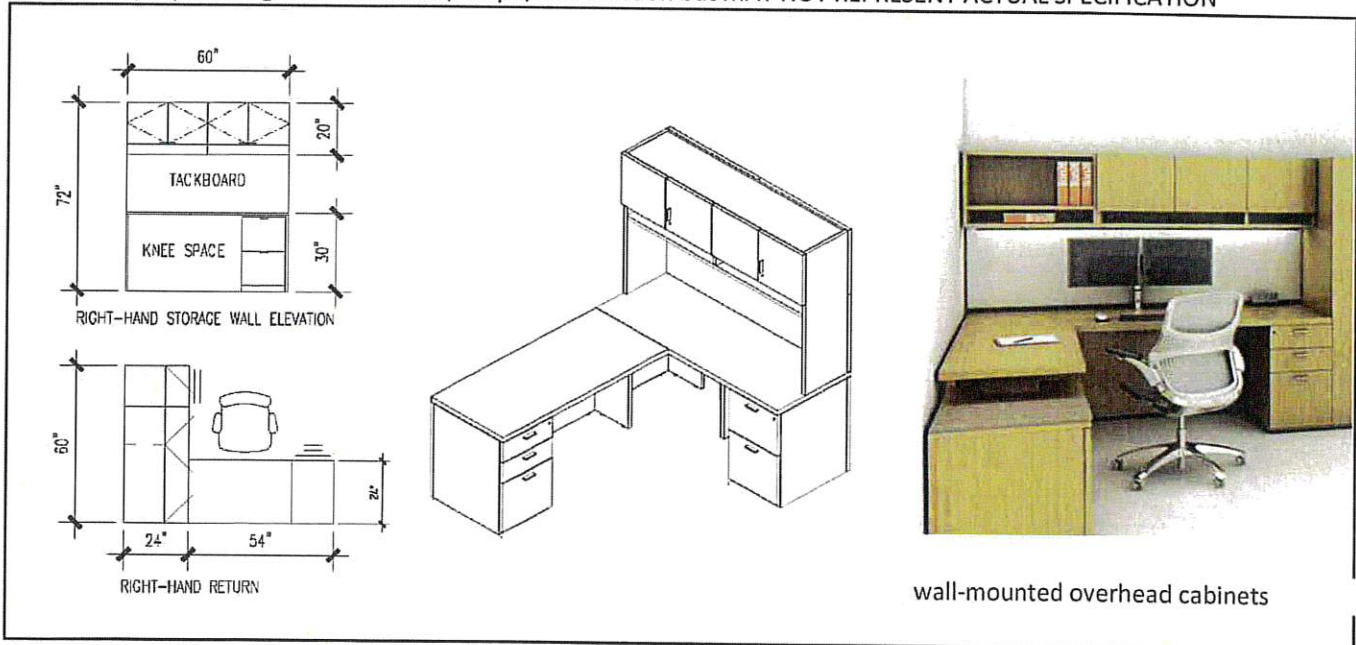
BASIS OF DESIGN

Manufacturer: Knoll
Series or Model: Reff Profiles
Dimensions: 78"W x 60"D overall footprint

Finishes / Materials: plastic laminate work surfaces
plastic laminate cabinets
plastic laminate door/drawer fronts

Features: wall-mounted overhead cabinets with
hinged doors & open cubby shelves
tackboard from work surface to OH cabs
full height/depth end panels
bar pulls

Images may represent general materials, shape, and function but MAY NOT REPRESENT ACTUAL SPECIFICATION



ACCEPTABLE PRODUCTS MANUFACTURER SERIES or MODEL

| | | |
|-----------------------|---------------|-----------------------|
| Acceptable Alternate: | Steelcase | Elective Elements |
| Acceptable Alternate: | Herman Miller | Canvas Private Office |
| Acceptable Alternate: | Nucraft | Cambium |

NOTE: In order to be considered responsive, alternates must be submitted substantially similar in size, finishes, materials, features, construction, aesthetics, and warranty. Submittals must include comparison data with the Basis of Design specification as well as manufacturer's literature supporting equal or better product claim.

FURNITURE SPECIFICATION SHEET

MSB Station 6-1 Renovation and Addition
Wasilla, Alaska

GENERAL INFORMATION

Item Code: F16
Item Description: Task Chair 1

Total Units: 13

Location: Various Locations
(First Floor)

BASIS OF DESIGN

Manufacturer: Knoll
Series or Model: K.Task
Dimensions: 27"W x 27"D x 16.2-21.5" seat height

Finishes / Materials: upholstered seat cushion
double-layer mesh seat back
silver base

Features: height adjustable arm rests
synchronized tilt tension control
five-point tilt lock
waterfall edge
hard casters

Images may represent general materials, shape, and function but MAY NOT REPRESENT ACTUAL SPECIFICATION



| ACCEPTABLE PRODUCTS | MANUFACTURER | SERIES or MODEL |
|---------------------|--------------|-----------------|
|---------------------|--------------|-----------------|

| | | |
|-----------------------|---------------|----------|
| Acceptable Alternate: | Steelcase | Amia Air |
| Acceptable Alternate: | Herman Miller | Celle |
| Acceptable Alternate: | SitOnIt | Vectra |

NOTE: In order to be considered responsive, alternates must be submitted substantially similar in size, finishes, materials, features, construction, aesthetics, and warranty. Submittals must include comparison data with the Basis of Design specification as well as manufacturer's literature supporting equal or better product claim.

FURNITURE SPECIFICATION SHEET

MSB Station 6-1 Renovation and Addition
Wasilla, Alaska

GENERAL INFORMATION

Item Code: F17
Item Description: Task Chair 2
Total Units: 11
Location: Various Locations
(Second Floor)

BASIS OF DESIGN

Manufacturer: Knoll
Series or Model: Generation
Dimensions: 28.5"W x 26"D x 39.25" to 44.5"H
Finishes / Materials: flex back
upholstered seat
polished aluminum base
Features: high-performance arms
frameless flex back
frameless flex seat
dynamic seat suspension
hard casters

Images may represent general materials, shape, and function but MAY NOT REPRESENT ACTUAL SPECIFICATION



| ACCEPTABLE PRODUCTS | MANUFACTURER | SERIES or MODEL |
|---------------------|--------------|-----------------|
|---------------------|--------------|-----------------|

| | | |
|-----------------------|-----------|---------|
| Acceptable Alternate: | Steelcase | Gesture |
|-----------------------|-----------|---------|

| | | |
|-----------------------|---------------|-------|
| Acceptable Alternate: | Herman Miller | Aeron |
|-----------------------|---------------|-------|

| | | |
|-----------------------|------------|---------|
| Acceptable Alternate: | Humanscale | Freedom |
|-----------------------|------------|---------|

NOTE: In order to be considered responsive, alternates must be submitted substantially similar in size, finishes, materials, features, construction, aesthetics, and warranty. Submittals must include comparison data with the Basis of Design specification as well as manufacturer's literature supporting equal or better product claim.

FURNITURE SPECIFICATION SHEET

MSB Station 6-1 Renovation and Addition
Wasilla, Alaska

GENERAL INFORMATION

Item Code: F18
Item Description: Side Chair
Total Units: 8
Location: Chief Office
Medic 1 Office

BASIS OF DESIGN

Manufacturer: Knoll
Series or Model: Ollo (Armless)
Dimensions: 23.5"W x 23"D x 31.75" - 37"H
seat height adjustable 16" to 21.2"
Finishes / Materials: molded plastic back
upholstered seat cushion
polished aluminum base
Features: height adjustable pneumatic cylinder
generous seat cushion for comfort
lower back lumbar support
upper back flexes
carpet casters

Images may represent general materials, shape, and function but MAY NOT REPRESENT ACTUAL SPECIFICATION



| ACCEPTABLE PRODUCTS | MANUFACTURER | SERIES or MODEL |
|---------------------|--------------|-----------------|
|---------------------|--------------|-----------------|

| | | |
|-----------------------|---------------|-------|
| Acceptable Alternate: | Steelcase | Qivi |
| Acceptable Alternate: | Herman Miller | Keyn |
| Acceptable Alternate: | SitOnIt | Ioniq |

NOTE: In order to be considered responsive, alternates must be submitted substantially similar in size, finishes, materials, features, construction, aesthetics, and warranty. Submittals must include comparison data with the Basis of Design specification as well as manufacturer's literature supporting equal or better product claim.

FURNITURE SPECIFICATION SHEET

MSB Station 6-1 Renovation and Addition
Wasilla, Alaska

GENERAL INFORMATION

Item Code: F11-2
Item Description: Meeting Table 2
Total Units: 1
Location: Medic 1 Office

BASIS OF DESIGN

Manufacturer: Knoll
Series or Model: Islands Round Table, X-Base
Dimensions: 36" DIA x 29"H
Finishes / Materials: plastic laminate work surface
polished aluminum column and base
Features: glides
x-base

Images may represent general materials, shape, and function but MAY NOT REPRESENT ACTUAL SPECIFICATION



| ACCEPTABLE PRODUCTS | MANUFACTURER | SERIES or MODEL |
|-----------------------|---------------|---------------------------|
| Acceptable Alternate: | Steelcase | Freestanding X-Base Table |
| Acceptable Alternate: | Herman Miller | Everywhere Table Square |
| Acceptable Alternate: | Nucraft | Myne Meeting Table X-Base |

NOTE: In order to be considered responsive, alternates must be submitted substantially similar in size, finishes, materials, features, construction, aesthetics, and warranty. Submittals must include comparison data with the Basis of Design specification as well as manufacturer's literature supporting equal or better product claim.

FURNITURE SPECIFICATION SHEET

MSB Station 6-1 Renovation and Addition
Wasilla, Alaska

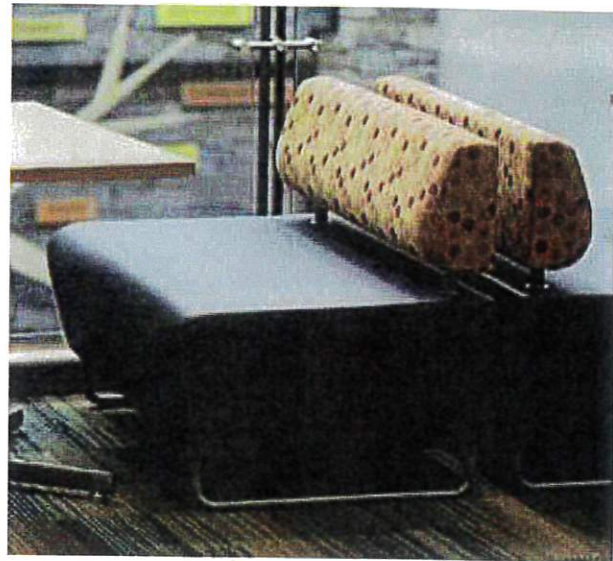
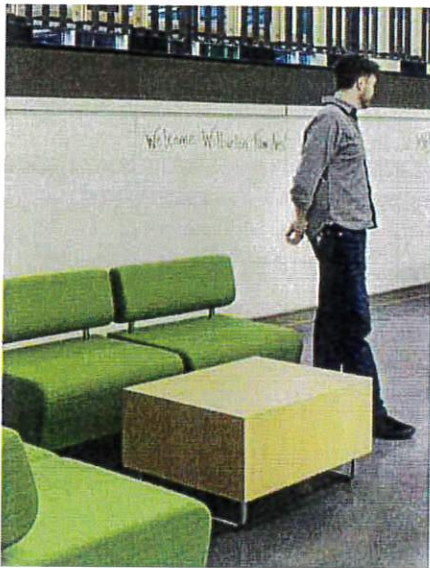
GENERAL INFORMATION

Item Code: F19
Item Description: Lobby Bench
Total Units: 2
Location: 2nd Floor Lobby

BASIS OF DESIGN

Manufacturer: KI
Series or Model: Hub Armless Lounge H43
Dimensions: 26"W x 26"D x 30.25"H
Finishes / Materials: vinyl seat upholstery
textile backrest upholstery
metal legs
Features: armless bench
open between seat and back cushion
ganged to make continuous bench

Images may represent general materials, shape, and function but MAY NOT REPRESENT ACTUAL SPECIFICATION



Single bench with similar features measuring 54" to 72" in overall width will be considered in place of two individual units.

NOTE: In order to be considered responsive, alternates must be submitted substantially similar in size, finishes, materials, features, construction, aesthetics, and warranty. Submittals must include comparison data with the Basis of Design specification as well as manufacturer's literature supporting equal or better product claim.

FURNITURE SPECIFICATION SHEET

MSB Station 6-1 Renovation and Addition
Wasilla, Alaska

GENERAL INFORMATION

Item Code: F27
Item Description: Adjustable Height
Foot Rest

Total Units: 1

Location: Reception Area

BASIS OF DESIGN

Manufacturer: Steelcase
Series or Model: Footrest Model 13-0003085
Dimensions:

Finishes / Materials: non-skid black vinyl

Features: four height positions 2" to 6" from floor

Images may represent general materials, shape, and function but MAY NOT REPRESENT ACTUAL SPECIFICATION



NOTE: In order to be considered responsive, alternates must be submitted substantially similar in size, finishes, materials, features, construction, aesthetics, and warranty. Submittals must include comparison data with the Basis of Design specification as well as manufacturer's literature supporting equal or better product claim.

FURNITURE SPECIFICATION SHEET

MSB Station 6-1 Renovation and Addition
Wasilla, Alaska

GENERAL INFORMATION

Item Code: F22-1
Item Description: Lateral File

Total Units: 3

Location: Reception Area

NOTE: All work surfaces, end panels, and storage unit exterior surfaces in work stations, open offices, and private offices must be from a single manufacturer's product line or, at a minimum, have identical plastic laminate finishes and pulls.

BASIS OF DESIGN

Manufacturer: Knoll
Series or Model: Calibre Laminate Front Lateral Files
Dimensions: 30"W x 18"D x 27"H

Finishes / Materials: plastic laminate drawer fronts
metal cabinets
metal interior

Features: two drawer lateral file
lockable
bar style pulls

Images may represent general materials, shape, and function but MAY NOT REPRESENT ACTUAL SPECIFICATION



| ACCEPTABLE PRODUCTS | MANUFACTURER | SERIES or MODEL |
|---------------------|--------------|-----------------|
|---------------------|--------------|-----------------|

| | | |
|-----------------------|-----------|-------------------|
| Acceptable Alternate: | Steelcase | Universal Storage |
|-----------------------|-----------|-------------------|

| | | |
|-----------------------|---------------|------------------|
| Acceptable Alternate: | Herman Miller | Meridian Storage |
|-----------------------|---------------|------------------|

| | | |
|-----------------------|----------------|-------|
| Acceptable Alternate: | Great Openings | Trace |
|-----------------------|----------------|-------|

NOTE: In order to be considered responsive, alternates must be submitted substantially similar in size, finishes, materials, features, construction, aesthetics, and warranty. Submittals must include comparison data with the Basis of Design specification as well as manufacturer's literature supporting equal or better product claim.

FURNITURE SPECIFICATION SHEET

MSB Station 6-1 Renovation and Addition
Wasilla, Alaska

GENERAL INFORMATION

Item Code: F22-2
Item Description: Lateral File /
Storage Cabinet

Total Units: 2

Location: Reception Area

NOTE: All work surfaces, end panels, and storage unit exterior surfaces in work stations, open offices, and private offices must be from a single manufacturer's product line or, at a minimum, have identical plastic laminate finishes and pulls.

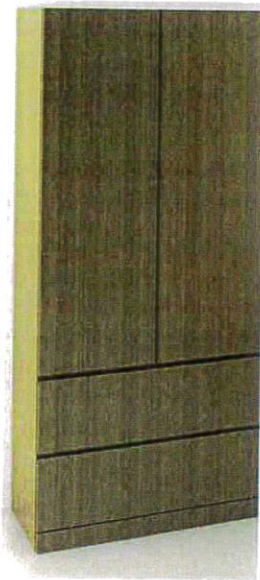
BASIS OF DESIGN

Manufacturer: Knoll
Series or Model: Reff Profiles Cabinet
Dimensions: 30"W x 20"D x 72.5"H

Finishes / Materials: plastic laminate cabinet
plastic laminate drawer fronts

Features: upper hinged doors
adjustable shelves
two lateral file drawers
lockable
bar style pulls

Images may represent general materials, shape, and function but MAY NOT REPRESENT ACTUAL SPECIFICATION



| ACCEPTABLE PRODUCTS | MANUFACTURER | SERIES or MODEL |
|---------------------|--------------|-----------------|
|---------------------|--------------|-----------------|

| | | |
|-----------------------|---------------|-----------------------|
| Acceptable Alternate: | Steelcase | Elective Elements |
| Acceptable Alternate: | Herman Miller | Canvas Private Office |
| Acceptable Alternate: | Nucraft | Cambium |

NOTE: In order to be considered responsive, alternates must be submitted substantially similar in size, finishes, materials, features, construction, aesthetics, and warranty. Submittals must include comparison data with the Basis of Design specification as well as manufacturer's literature supporting equal or better product claim.

FURNITURE SPECIFICATION SHEET

MSB Station 6-1 Renovation and Addition
Wasilla, Alaska

GENERAL INFORMATION

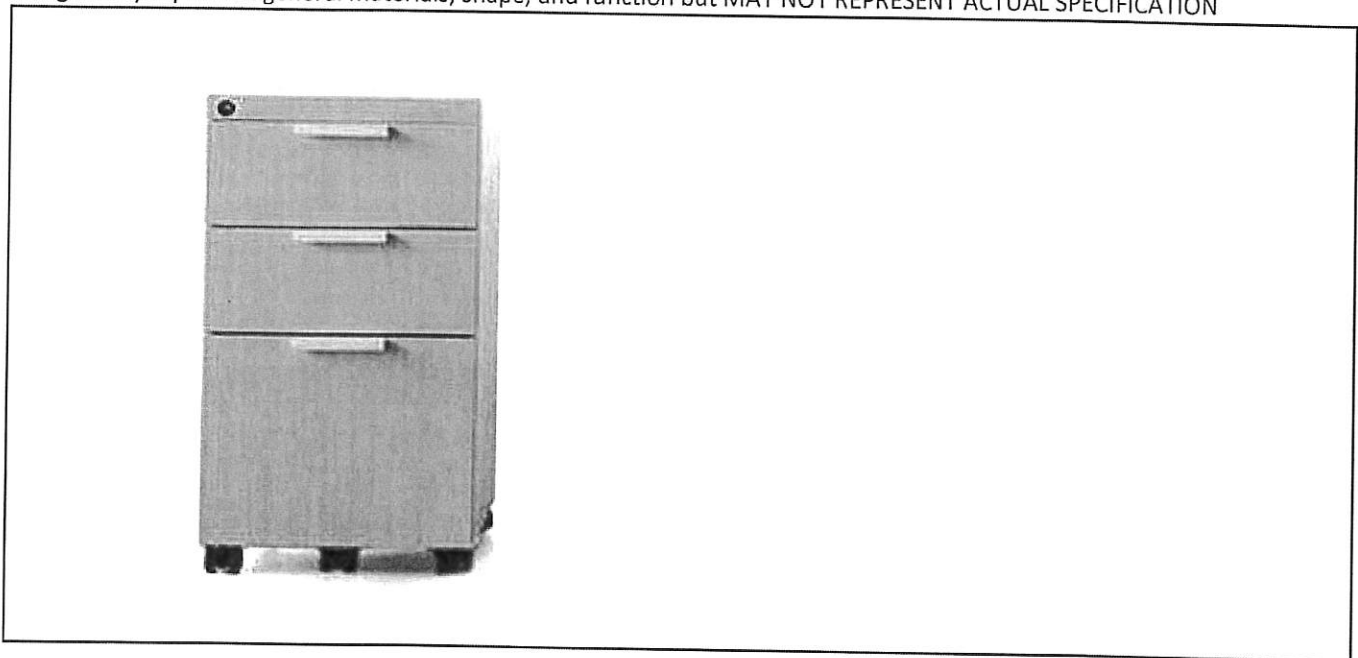
Item Code: F25
Item Description: Mobile Pedestal File BBF
Total Units: 11
Location: Administrative Offices
Medic 1

NOTE: All work surfaces, end panels, and storage unit exterior surfaces in work stations, open offices, and private offices must be from a single manufacturer's product line or, at a minimum, have identical plastic laminate finishes and pulls.

BASIS OF DESIGN

Manufacturer: Knoll
Series or Model: Series 2
Dimensions: 14-7/8"W x 22-3/4"D x 26-3/8"H
Finishes / Materials: plastic laminate front
powder-coated metal case
satin finish silver pulls
Features: lockable
bar style pulls

Images may represent general materials, shape, and function but MAY NOT REPRESENT ACTUAL SPECIFICATION



| ACCEPTABLE PRODUCTS | MANUFACTURER | SERIES or MODEL |
|---------------------|--------------|-----------------|
|---------------------|--------------|-----------------|

| | | |
|-----------------------|----------------|-------------------|
| Acceptable Alternate: | Steelcase | Universal Storage |
| Acceptable Alternate: | Herman Miller | Meridian Storage |
| Acceptable Alternate: | Great Openings | Trace |

NOTE: In order to be considered responsive, alternates must be submitted substantially similar in size, finishes, materials, features, construction, aesthetics, and warranty. Submittals must include comparison data with the Basis of Design specification as well as manufacturer's literature supporting equal or better product claim.

FURNITURE SPECIFICATION SHEET

MSB Station 6-1 Renovation and Addition
Wasilla, Alaska

GENERAL INFORMATION

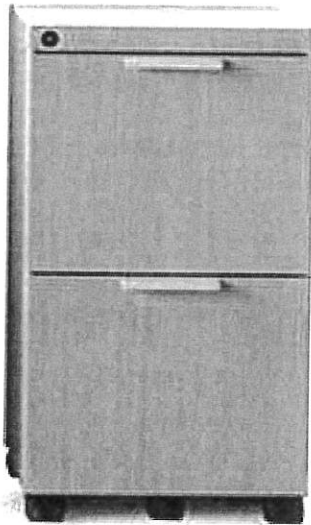
Item Code: F26
Item Description: Mobile Pedestal File FF
Total Units: 8
Location: Administrative Offices

BASIS OF DESIGN

Manufacturer: Knoll
Series or Model: Series 2
Dimensions: 14-7/8"W x 22-3/4"D x 26-3/8"H
Finishes / Materials: plastic laminate front
powder-coated metal case
satin finish silver pulls
Features: lockable
bar style pulls

NOTE: All work surfaces, end panels, and storage unit exterior surfaces in work stations, open offices, and private offices must be from a single manufacturer's product line or, at a minimum, have identical plastic laminate finishes and pulls.

Images may represent general materials, shape, and function but MAY NOT REPRESENT ACTUAL SPECIFICATION



| ACCEPTABLE PRODUCTS | MANUFACTURER | SERIES or MODEL |
|---------------------|--------------|-----------------|
|---------------------|--------------|-----------------|

| | | |
|-----------------------|----------------|-------------------|
| Acceptable Alternate: | Steelcase | Universal Storage |
| Acceptable Alternate: | Herman Miller | Meridian Storage |
| Acceptable Alternate: | Great Openings | Trace |

NOTE: In order to be considered responsive, alternates must be submitted substantially similar in size, finishes, materials, features, construction, aesthetics, and warranty. Submittals must include comparison data with the Basis of Design specification as well as manufacturer's literature supporting equal or better product claim.

FURNITURE SPECIFICATION SHEET

MSB Station 6-1 Renovation and Addition
Wasilla, Alaska

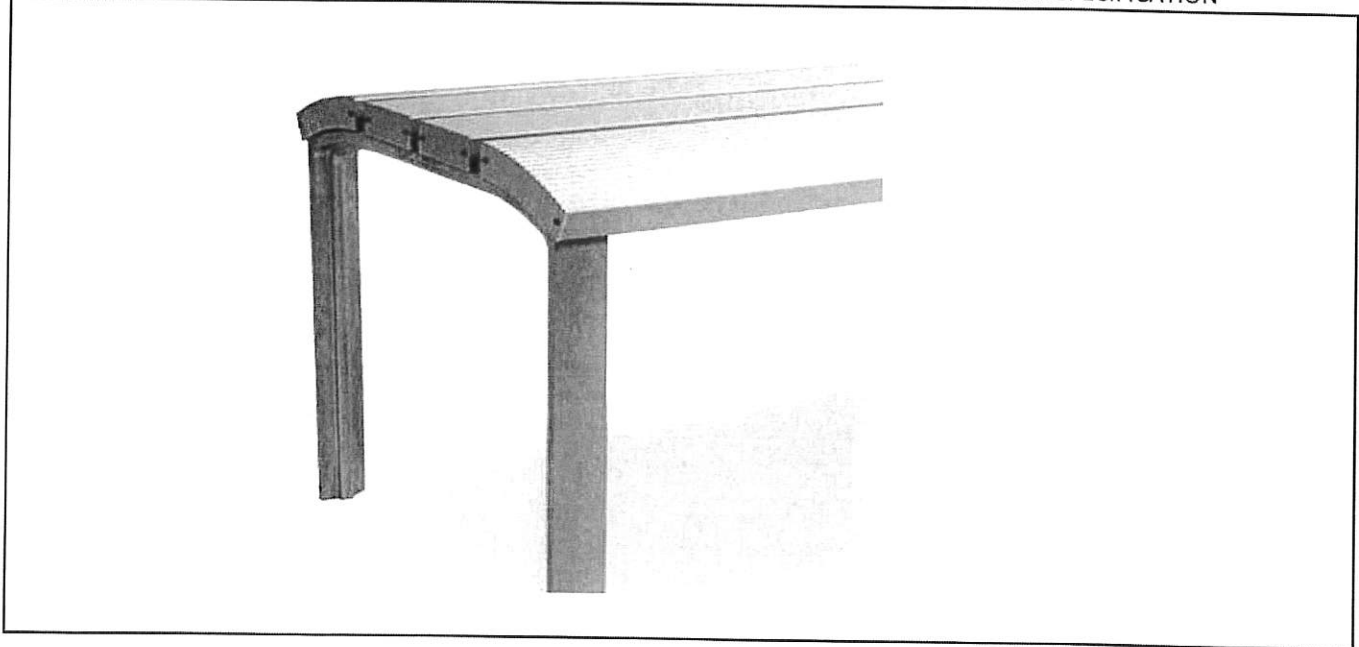
GENERAL INFORMATION

Item Code: F31
Item Description: Metal Bench
Total Units: 1
Location: Decon Area /
Apparatus Bay

BASIS OF DESIGN

Manufacturer: Landscape Forms
Series or Model: Backless Bench
Dimensions: 59"W x 19.5"D x 17"H
Finishes / Materials: all aluminum construction
Features: free-standing or bolt-down capability

Images may represent general materials, shape, and function but MAY NOT REPRESENT ACTUAL SPECIFICATION



NOTE: In order to be considered responsive, alternates must be submitted substantially similar in size, finishes, materials, features, construction, aesthetics, and warranty. Submittals must include comparison data with the Basis of Design specification as well as manufacturer's literature supporting equal or better product claim.

FURNITURE SPECIFICATION SHEET

MSB Station 6-1 Renovation and Addition
Wasilla, Alaska

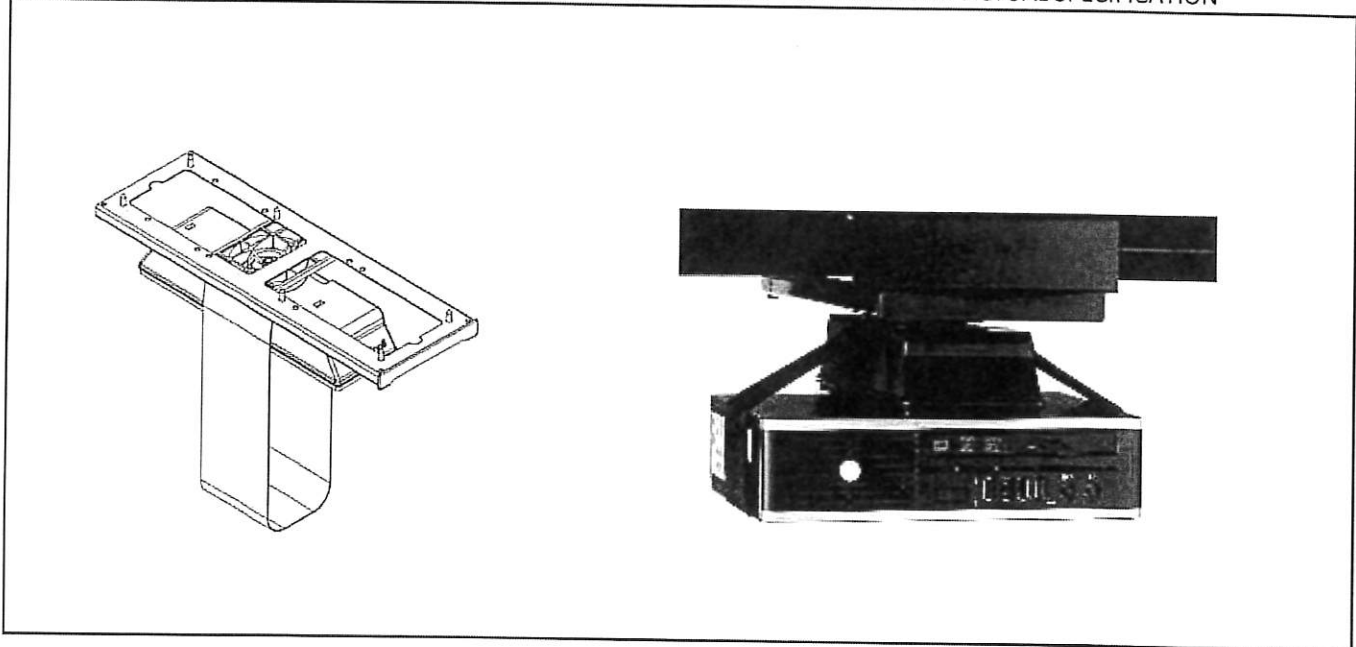
GENERAL INFORMATION

Item Code: F28
Item Description: Under-Mount CPU Sling
Total Units: 24
Location: all work stations and
built-in desks

BASIS OF DESIGN

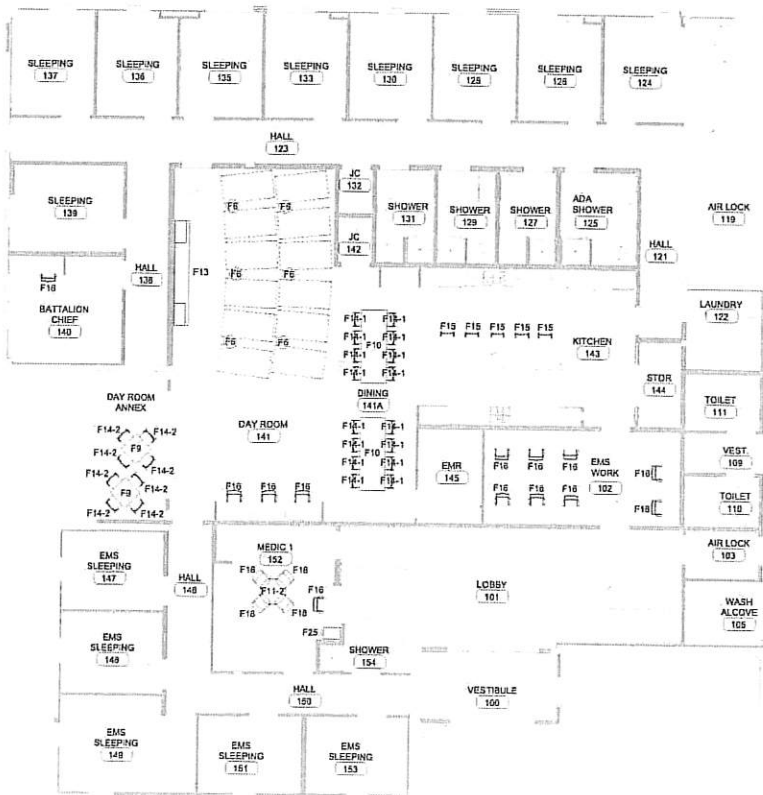
Manufacturer: Knoll
Series or Model: Sling CPU Holder
Dimensions: verify CPU size compatibility with owner
Finishes / Materials:
Features: rotatable 360 degrees for access

Images may represent general materials, shape, and function but MAY NOT REPRESENT ACTUAL SPECIFICATION



NOTE: Owner's current CPU sizes include, but are not limited to, 11.5" x 11.5" x 4" and 7" x 7.25" x 1.5". Verify quantities and equipment sizes prior to ordering to ensure compatibility.

NOTE: In order to be considered responsive, alternates must be submitted substantially similar in size, finishes, materials, features, construction, aesthetics, and warranty. Submittals must include comparison data with the Basis of Design specification as well as manufacturer's literature supporting equal or better product claim.



FURNITURE LEGEND

| SPEC SHEETS | PLAN CODE | ITEM DESCRIPTION | TOTAL QUANTITY |
|-------------|-----------|------------------------------------|----------------|
| 1 | F11 | TV Console | 1 |
| 2 | F6 | Side Table | 6 |
| 3 | F15 | Dining Stool | 5 |
| 4 | F10 | Large Dining Table | 2 |
| 5 | F14-1 | Dining Chair 1 | 16 |
| 6 | F9 | Small Dining Table | 4 |
| 7 | F14-2 | Dining Chair 2 | 16 |
| 8 | F20-1 | Workstation 1 | 1 |
| 9 | F29 | File Cabinet 6BF | 1 |
| 10 | F30 | Lateral File Cabinet | 1 |
| 11 | F11-1 | Meeting Table 1 | 1 |
| 12 | F23 | Bookcase | 2 |
| 13 | F20-2 | Workstation 2 | 2 |
| 14 | F20-3L | Workstation 3L (Left Hand Return) | 2 |
| 15 | F20-3R | Workstation 3R (Right Hand Return) | 4 |
| 16 | F16 | Task Chair 1 | 13 |
| 17 | F17 | Task Chair 2 | 11 |
| 18 | F18 | Side Chair | 8 |
| 19 | F11-2 | Meeting Table 2 | 1 |
| 20 | F19 | Lobby Bench | 2* |
| 21 | F27 | Adjustable Height Foot Rest | 1 |
| 22 | F22-1 | Lateral Files | 3 |
| 23 | F22-2 | Lateral Files with Storage Cabinet | 2 |
| 24 | F25 | Mobile Pedestal File 6BF | 11 |
| 25 | F26 | Mobile Pedestal File FF | 8 |
| 26 | F31 | Metal Bench | 1 |
| 27 | F28 | Under-Mount CPU Sling | 24 |

* May be substituted with a single, wider unit - see page 20
NOTE: In case of quantity discrepancies, drawings shall prevail.

1st FLOOR FURNITURE PLAN
SCALE: 3/16" = 1'-0"



| | | | | | | | | | | | | | | | | | | | | | | | | | | | | | | | | | | | | | | | | | | | | | | | | | | | | | | | | | | | | | | | | | | | | | | | | | | | | | | | | | | | | | | | | | | | | | | | | | | |
|------|------|------|------|------|------|------|------|------|------|------|------|------|------|------|------|------|------|------|------|------|------|------|------|------|------|------|------|------|------|------|------|------|------|------|------|------|------|------|------|------|------|------|------|------|------|------|------|------|------|------|------|------|------|------|------|------|------|------|------|------|------|------|------|------|------|------|------|------|------|------|------|------|------|------|------|------|------|------|------|------|------|------|------|------|------|------|------|------|------|------|------|------|------|------|------|------|------|------|
| 1502 | 1503 | 1504 | 1505 | 1506 | 1507 | 1508 | 1509 | 1510 | 1511 | 1512 | 1513 | 1514 | 1515 | 1516 | 1517 | 1518 | 1519 | 1520 | 1521 | 1522 | 1523 | 1524 | 1525 | 1526 | 1527 | 1528 | 1529 | 1530 | 1531 | 1532 | 1533 | 1534 | 1535 | 1536 | 1537 | 1538 | 1539 | 1540 | 1541 | 1542 | 1543 | 1544 | 1545 | 1546 | 1547 | 1548 | 1549 | 1550 | 1551 | 1552 | 1553 | 1554 | 1555 | 1556 | 1557 | 1558 | 1559 | 1560 | 1561 | 1562 | 1563 | 1564 | 1565 | 1566 | 1567 | 1568 | 1569 | 1570 | 1571 | 1572 | 1573 | 1574 | 1575 | 1576 | 1577 | 1578 | 1579 | 1580 | 1581 | 1582 | 1583 | 1584 | 1585 | 1586 | 1587 | 1588 | 1589 | 1590 | 1591 | 1592 | 1593 | 1594 | 1595 | 1596 | 1597 | 1598 | 1599 | 1600 |
|------|------|------|------|------|------|------|------|------|------|------|------|------|------|------|------|------|------|------|------|------|------|------|------|------|------|------|------|------|------|------|------|------|------|------|------|------|------|------|------|------|------|------|------|------|------|------|------|------|------|------|------|------|------|------|------|------|------|------|------|------|------|------|------|------|------|------|------|------|------|------|------|------|------|------|------|------|------|------|------|------|------|------|------|------|------|------|------|------|------|------|------|------|------|------|------|------|------|------|

MSB STATION 6-1 RENOVATION/ADDITION
PFAE AND DOCUMENTS
101 W. EVANSON AVE.
MILWAUKEE, WI 53212

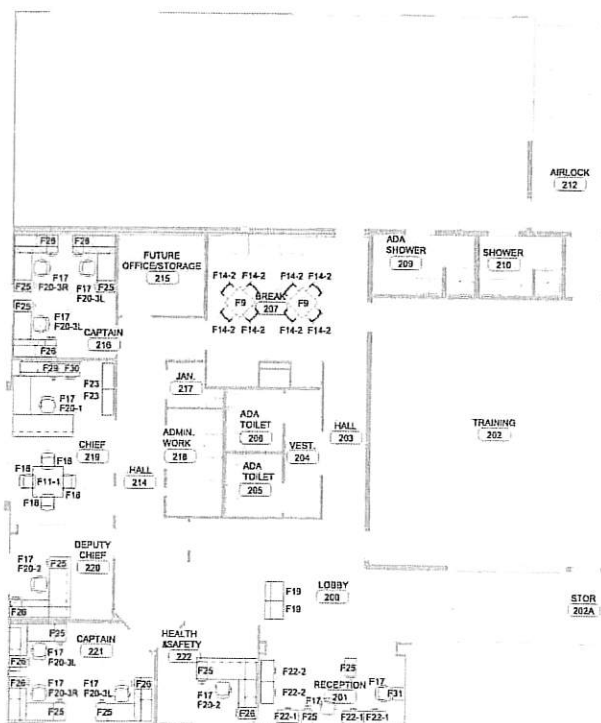
625 S CORB ST
PALMER, AK
99645
P: 907.748.8500
w@architecture.com

Wall Units

1st FLOOR FURNITURE PLAN

F1.1

12/11/2014 10:45



FURNITURE LEGEND

| SPEC SHEETS | | | |
|-------------|-----------|------------------------------------|----------------|
| PAGE NO. | PLAN CODE | ITEM DESCRIPTION | TOTAL QUANTITY |
| 1 | F13 | TV Console | 1 |
| 2 | F6 | Side Table | 6 |
| 3 | F15 | Dining Stool | 5 |
| 4 | F10 | Large Dining Table | 2 |
| 5 | F14-1 | Dining Chair 1 | 16 |
| 6 | F9 | Small Dining Table | 4 |
| 7 | F14-2 | Dining Chair 2 | 16 |
| 8 | F20-1 | Workstation 1 | 1 |
| 9 | F20 | File Cabinet BBF | 1 |
| 10 | F30 | Lateral File Cabinet | 1 |
| 11 | F11-1 | Meeting Table 1 | 1 |
| 12 | F23 | Bookcase | 2 |
| 13 | F20-2 | Workstation 2 | 2 |
| 14 | F20-3L | Workstation 3L (Left-Hand Return) | 2 |
| 15 | F20-3R | Workstation 3R (Right-Hand Return) | 4 |
| 16 | F16 | Taxi Chair 1 | 13 |
| 17 | F17 | Taxi Chair 2 | 11 |
| 18 | F18 | Side Chair | 8 |
| 19 | F11-2 | Meeting Table 2 | 1 |
| 20 | F19 | Lobby Bench | 2* |
| 21 | F27 | Adjustable Height Foot Rest | 1 |
| 22 | F22-1 | Lateral Files | 3 |
| 23 | F22-2 | Lateral Files with Storage Cabinet | 2 |
| 24 | F25 | Mobile Pedestal File BBF | 11 |
| 25 | F26 | Mobile Pedestal File FF | 8 |
| 26 | F31 | Metal Bench | 1 |
| 27 | F28 | Under-Mount CPU Sling | 24 |

* May be substituted with a single, wider unit - see page 20.
NOTE: In case of quantity discrepancies, drawings shall prevail.

2nd FLOOR FURNITURE PLAN
SCALE: 3/16" = 1'-0"



1/2" = 1'-0"
1/4" = 1'-0"
1/8" = 1'-0"
1/16" = 1'-0"
1/32" = 1'-0"
1/64" = 1'-0"
1/128" = 1'-0"
1/256" = 1'-0"
1/512" = 1'-0"
1/1024" = 1'-0"
1/2048" = 1'-0"
1/4096" = 1'-0"
1/8192" = 1'-0"
1/16384" = 1'-0"
1/32768" = 1'-0"
1/65536" = 1'-0"
1/131072" = 1'-0"
1/262144" = 1'-0"
1/524288" = 1'-0"
1/1048576" = 1'-0"
1/2097152" = 1'-0"
1/4194304" = 1'-0"
1/8388608" = 1'-0"
1/16777216" = 1'-0"
1/33554432" = 1'-0"
1/67108864" = 1'-0"
1/134217728" = 1'-0"
1/268435456" = 1'-0"
1/536870912" = 1'-0"
1/1073741824" = 1'-0"
1/2147483648" = 1'-0"
1/4294967296" = 1'-0"
1/8589934592" = 1'-0"
1/17179869184" = 1'-0"
1/34359738368" = 1'-0"
1/68719476736" = 1'-0"
1/137438953472" = 1'-0"
1/274877906944" = 1'-0"
1/549755813888" = 1'-0"
1/1099511627776" = 1'-0"
1/2199023255552" = 1'-0"
1/4398046511104" = 1'-0"
1/8796093022208" = 1'-0"
1/17592186044416" = 1'-0"
1/35184372088832" = 1'-0"
1/70368744177664" = 1'-0"
1/140737488355328" = 1'-0"
1/281474976710656" = 1'-0"
1/562949953421312" = 1'-0"
1/1125899906842624" = 1'-0"
1/2251799813685248" = 1'-0"
1/4503599627370496" = 1'-0"
1/9007199254740992" = 1'-0"
1/18014398509481984" = 1'-0"
1/36028797018963968" = 1'-0"
1/72057594037927936" = 1'-0"
1/144115188075855872" = 1'-0"
1/288230376151711744" = 1'-0"
1/576460752303423488" = 1'-0"
1/1152921504606846976" = 1'-0"
1/2305843009213693952" = 1'-0"
1/4611686018427387904" = 1'-0"
1/9223372036854775808" = 1'-0"
1/18446744073709551616" = 1'-0"
1/36893488147419103232" = 1'-0"
1/73786976294838206464" = 1'-0"
1/147573952589676412928" = 1'-0"
1/295147905179352825856" = 1'-0"
1/590295810358705651712" = 1'-0"
1/1180591620717411303424" = 1'-0"
1/2361183241434822606848" = 1'-0"
1/4722366482869645213696" = 1'-0"
1/9444732965739290427392" = 1'-0"
1/18889465931478580854784" = 1'-0"
1/37778931862957161709568" = 1'-0"
1/75557863725914323419136" = 1'-0"
1/151115727451828646838272" = 1'-0"
1/302231454903657293676544" = 1'-0"
1/604462909807314587353088" = 1'-0"
1/1208925819614629174706176" = 1'-0"
1/2417851639229258349412352" = 1'-0"
1/4835703278458516698824704" = 1'-0"
1/9671406556917033397649408" = 1'-0"
1/19342813113834066795298816" = 1'-0"
1/38685626227668133590597632" = 1'-0"
1/77371252455336267181195264" = 1'-0"
1/154742504910672534362390528" = 1'-0"
1/309485009821345068724781056" = 1'-0"
1/618970019642690137449562112" = 1'-0"
1/1237940039285380274899124224" = 1'-0"
1/2475880078570760549798248448" = 1'-0"
1/4951760157141521099596496896" = 1'-0"
1/9903520314283042199192993792" = 1'-0"
1/19807040628566084398385987584" = 1'-0"
1/39614081257132168796771975168" = 1'-0"
1/79228162514264337593543950336" = 1'-0"
1/158456325028528675187087900672" = 1'-0"
1/316912650057057350374175801344" = 1'-0"
1/633825300114114700748351602688" = 1'-0"
1/1267650600228229401496703205376" = 1'-0"
1/2535301200456458802993406410752" = 1'-0"
1/5070602400912917605986812821504" = 1'-0"
1/10141204801825835211973625643008" = 1'-0"
1/20282409603651670423947251286016" = 1'-0"
1/40564819207303340847894502572032" = 1'-0"
1/81129638414606681695789005144064" = 1'-0"
1/162259276829213363391578010288128" = 1'-0"
1/324518553658426726783156020576256" = 1'-0"
1/649037107316853453566312041152512" = 1'-0"
1/1298074214633706907132624082305024" = 1'-0"
1/2596148429267413814265248164610048" = 1'-0"
1/5192296858534827628530496329220096" = 1'-0"
1/10384593717069655257060992658440192" = 1'-0"
1/20769187434139310514121985316880384" = 1'-0"
1/41538374868278621028243970633760768" = 1'-0"
1/83076749736557242056487941267521536" = 1'-0"
1/166153499473114484112975882535043072" = 1'-0"
1/332306998946228968225951765070086144" = 1'-0"
1/664613997892457936451903530140172288" = 1'-0"
1/1329227995784915872903807060280344576" = 1'-0"
1/2658455991569831745807614120560689152" = 1'-0"
1/5316911983139663491615228241121378304" = 1'-0"
1/10633823966279326983230456482242756608" = 1'-0"
1/21267647932558653966460912964485513216" = 1'-0"
1/42535295865117307932921825928971026432" = 1'-0"
1/85070591730234615865843651857942052864" = 1'-0"
1/170141183460469231731687303715884105728" = 1'-0"
1/340282366920938463463374607431768211456" = 1'-0"
1/680564733841876926926749214863536422912" = 1'-0"
1/1361129467683753853853498429727072845824" = 1'-0"
1/272225893536750770770699685945414569152" = 1'-0"
1/544451787073501541541399371890829138304" = 1'-0"
1/1088903574147003083082798743781658276608" = 1'-0"
1/2177807148294006166165597487563316553216" = 1'-0"
1/4355614296588012332331194975126633106432" = 1'-0"
1/8711228593176024664662389950253266212864" = 1'-0"
1/1742245718635204932932477990050652424576" = 1'-0"
1/3484491437270409865864955980101304849152" = 1'-0"
1/6968982874540819731729911960202609698304" = 1'-0"
1/13937965749081639463459823920405219396608" = 1'-0"
1/27875931498163278926919647840810438793216" = 1'-0"
1/55751862996326557853839295681620877586432" = 1'-0"
1/111503725992653115707678591363241755712864" = 1'-0"
1/223007451985306231415357182726483511425728" = 1'-0"
1/44601490397061246283071436545296702285152" = 1'-0"
1/8920298079412249256614287309059340457024" = 1'-0"
1/17840596158824498513228574618118680914048" = 1'-0"
1/35681192317648997026457149236237361828096" = 1'-0"
1/71362384635297994052914298472474723656192" = 1'-0"
1/142724769270595988105828596944949447312384" = 1'-0"
1/285449538541191976211657193889898894624768" = 1'-0"
1/570899077082383952423314387779797789249536" = 1'-0"
1/1141798154164767904846628775559595578499072" = 1'-0"
1/2283596308329535809693257551119191156998144" = 1'-0"
1/4567192616659071619386515102238382313996288" = 1'-0"
1/9134385233318143238773030204476764627992576" = 1'-0"
1/18268770466636286477546060408953529255985152" = 1'-0"
1/36537540933272572955092120817907058511970304" = 1'-0"
1/73075081866545145910184241635814117023940608" = 1'-0"
1/146150163733090291820368483271628234047881216" = 1'-0"
1/29230032746618058364073696654325646809576432" = 1'-0"
1/58460065493236116728147393308651293619152864" = 1'-0"
1/116920130986472233456294786617302587238305728" = 1'-0"
1/233840261972944466912589573234605174476611456" = 1'-0"
1/467680523945888933825179146469210348953222912" = 1'-0"
1/935361047891777867650358292938420697906445824" = 1'-0"
1/187072209578355573530071658587684139581289152" = 1'-0"
1/374144419156711147060143317175368279162578304" = 1'-0"
1/748288838313422294120286634350736558325156608" = 1'-0"
1/1496577676626844588240573268701473116650313216" = 1'-0"
1/2993155353253689176481146537402946233300626432" = 1'-0"
1/5986310706507378352962293074805892466601252864" = 1'-0"
1/11972621413014756705924586149611784933202505728" = 1'-0"
1/23945242826029513411849172299223569866405011456" = 1'-0"
1/47890485652059026823698344598447139732810022912" = 1'-0"
1/95780971304118053647396689196894279465620045824" = 1'-0"
1/191561942608236107294793378393788558931240091536" = 1'-0"
1/383123885216472214589586756787577117862480183072" = 1'-0"
1/766247770432944429179173513575154235724960366144" = 1'-0"
1/1532495540865888858358347027150308471449920732288" = 1'-0"
1/3064991081731777716716694054300616942899841464576" = 1'-0"
1/6129982163463555433433388108601233885799682929152" = 1'-0"
1/12259964326927110866866776217202467771599365858304" = 1'-0"
1/24519928653854221733733552434404935543198731716608" = 1'-0"
1/49039857307708443467467104868809871086397463433216" = 1'-0"
1/98079714615416886934934209737619742172794926866432" = 1'-0"
1/196159429228833773869868419475239484345589853732864" = 1'-0"
1/39231885845766754773973683895047896869117906746528" = 1'-0"
1/78463771691533509547947367790095793738235813493056" = 1'-0"
1/156927543383067019095894735580191587476471626986112" = 1'-0"
1/313855086766134038191789471160383174952943253972224" = 1'-0"
1/627710173532268076383578942320766349905886507944448" = 1'-0"
1/1255420347064536152767157884641532699811770015888896" = 1'-0"
1/2510840694129072305534315769283065399623540031777792" = 1'-0"
1/5021681388258144611068631538566130799247080063555584" = 1'-0"
1/10043362776516289222137263077132261598494160127111168" = 1'-0"
1/20086725553032578444274526154264523196988320254222336" = 1'-0"
1/40173451106065156888549052308529046393976640508444672" = 1'-0"
1/80346902212130313777098104617058092787953281016889344" = 1'-0"
1/160693804424260627554196209234116185575906562033778688" = 1'-0"
1/321387608848521255108392418468232371151813124067557376" = 1'-0"
1/642775217697042510216784836936464742303626248135114752" = 1'-0"
1/1285550435394085020433569673872929484607252496270229504" = 1'-0"
1/2571100870788170040867139347745858969214504992540459008" = 1'-0"
1/5142201741576340081734278695491717938429009985080918016" = 1'-0"
1/10284403483152680163468557390983435876858019970161836032" = 1'-0"
1/20568806966305360326937114781966871753716039940323672064" = 1'-0"
1/41137613932610720653874229563933743507432079880647344128" = 1'-0"
1/82275227865221441307748459127867487014864159761294688256" = 1'-0"
1/16455045573044288261549691825573497402972831952258937504" = 1'-0"
1/32910091146088576523099383651146994805945663904517875008" = 1'-0"
1/65820182292177153046198767302293989611891327809035750016" = 1'-0"
1/13164036458435430609239753460458797922378265601807150032" = 1'-0"
1/26328072916870861218479506920917595844756531203614300064" = 1'-0"
1/52656145833741722436959013841835191689513062407228600128" = 1'-0"
1/105312291667483444873918027683670383379026128014457200256" = 1'-0"
1/210624583334966889747836055367340766758052256028914400512" = 1'-0"
1/421249166669933779495672110734681533516104512057828801024" = 1'-0"
1/842498333339867558991344221469363067032209024115657602048" = 1'-0"
1/1684996666679735117982688442938726134064418048231315204096" = 1'-0"
1/3369993333359470235965376885877452268128836096462630408192" = 1'-0"
1/6739986666718940471930753771754904536257672192925260816384" = 1'-0"
1/1347997333343788094386150754350980907251534438585052162688" = 1'-0"
1/2695994666687576188772301508701961814503068877170104325376" = 1'-0"
1/5391989333375152377544603017403923629006137754340208650752" = 1'-0"
1/10783978666752304755089206034807847258012275088680417301504" = 1'-0"
1/21567957333504609510178412069615694516024550177360834603008" = 1'-0"
1/43135914667009219020356824139231389032049100354721669206016" = 1'-0"
1/86271829334018438040713648278462778064098200709443338412032" = 1'-0"
1/172543658668036876081427296556925556128196401418886676824064" = 1'-0"
1/345087317336073752162854593113851112246392802837773353648128" = 1'-0"
1/69017463467214750432570918622770222449278560567554670729625