



August 2019 Fires

U.S. SENATOR LISA MURKOWSKI



U.S. SENATOR DAN SULLIVAN



MORNING BRIEFINGS



Unprecedented Weather Conditions

Mckinley Fire General Weather Outlook - Observed

Observations from Parks Highway Weather Station

Created Tuesday, August 27, 2019 - Mark Loeffelbein IMET & Chris Moore FBAN

	FRI	SAT	SUN	MON	TUE	WED	THU
	16-Aug	17-Aug	18-Aug	19-Aug	20-Aug	21-Aug	22-Aug
Clouds @ 1500 (%)	0	0	0	0	0	70	0
Max Temp (F)	78	71	67	63	64	66	68
20ft Wind (mph)	12	17	16	5	7	5	8
Wind Direction*	SW	NE	NE	SW	SW	SW	N
Min Humidity (%)	32	25	22	27	32	30	24
RH Recoveries (%)	86	60	44	89	89	93	86
Fire Behavior Potential	Extreme	Extreme	Extreme	Active	Active	Active	Active

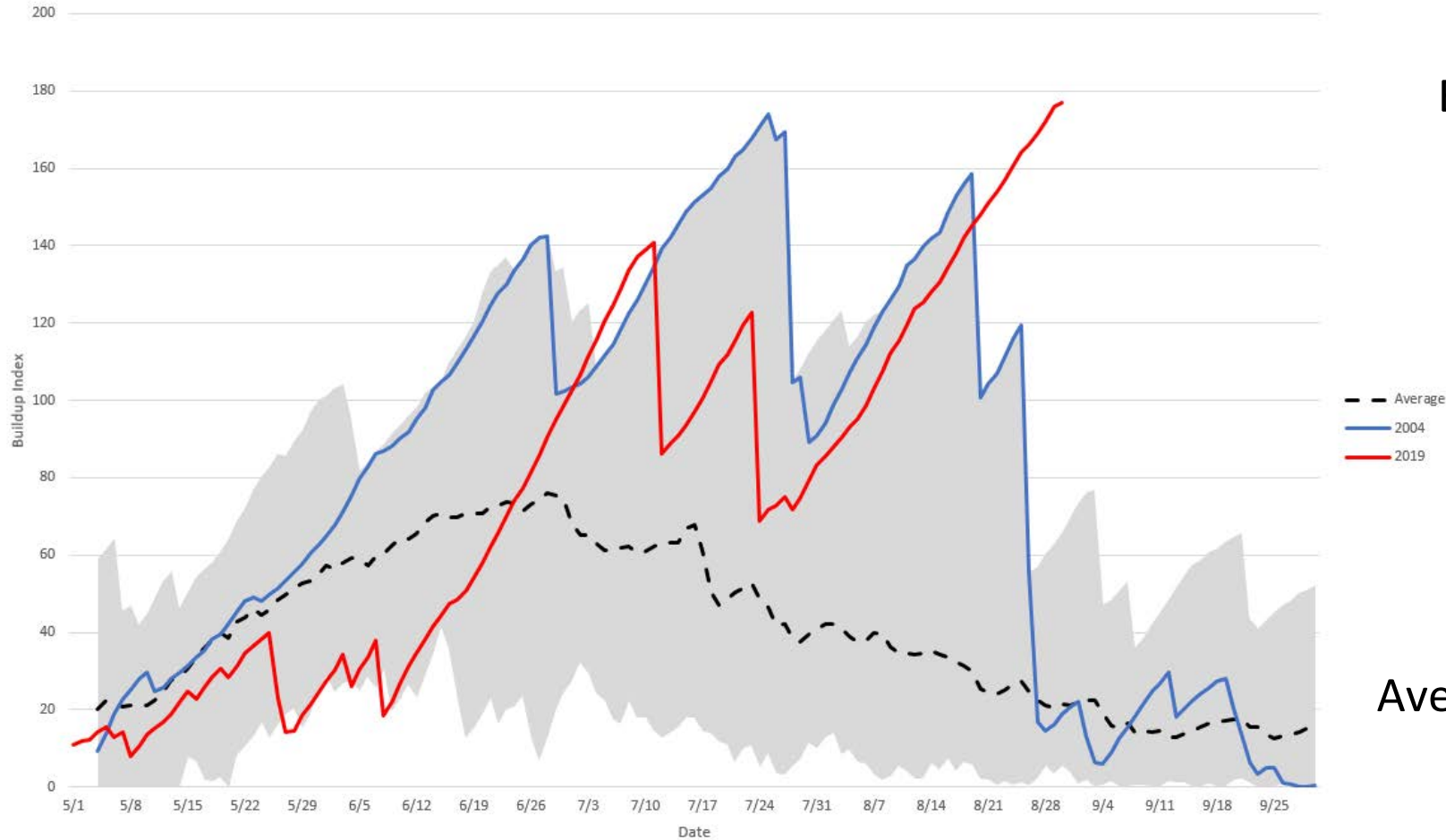
KEY:

	Conditions Favoring Low to Moderate Fire Behavior	Conditions Favoring High Fire Behavior	Conditions Favoring Extreme Fire Behavior
Clouds	$\geq 40 \%$	20 to 39 %	$< 20 \%$
Avg Max Temp	$\leq 64 \text{ F}$	65 to 74 F	$\geq 75 \text{ F}$
Wind Speed	$\leq 7 \text{ mph}$	8 to 14 mph	$\geq 15 \text{ mph}$
*Wind Direction	Criticality of wind direction highly dependent on burn operations and/or structures threatened		
Min Humidity	$\geq 40 \%$	31 to 39 %	$\leq 30 \%$
Humidity Recoveries	$\geq 70 \%$	50 to 69 %	$< 50 \%$



BUILD-UP INDEX CHART

Willow RAWS BUI 2000-2019



BUI on 8/29/19 at 178

Average BUI since year 2000 is 22



Fire Calls Received

August 17, 2019- August 20, 2019

Number of Fire Calls on 8/17/2019: 24

- McKinley fire called in around 4:31 p.m.
- Deshka fire started soon after

12 calls came in before the McKinley fire had started

11 calls came in after the McKinley fire had started

3 of these were structure fires

TOTAL FIRE RESPONSE CALLS August 17-19, 2019 = 95



EMS and Rescue Calls

August 17, 2019-August 19, 2019

Number of EMS and Rescue Calls on 8/17/2019: 24

- Additional responses
 - During this time frame there were two incidents involving airplanes
- One ambulance dedicated to the fire
- One ambulance dedicated to the fair

TOTAL EMS AND RESCUE CALLS August 17-19, 2019 = 57

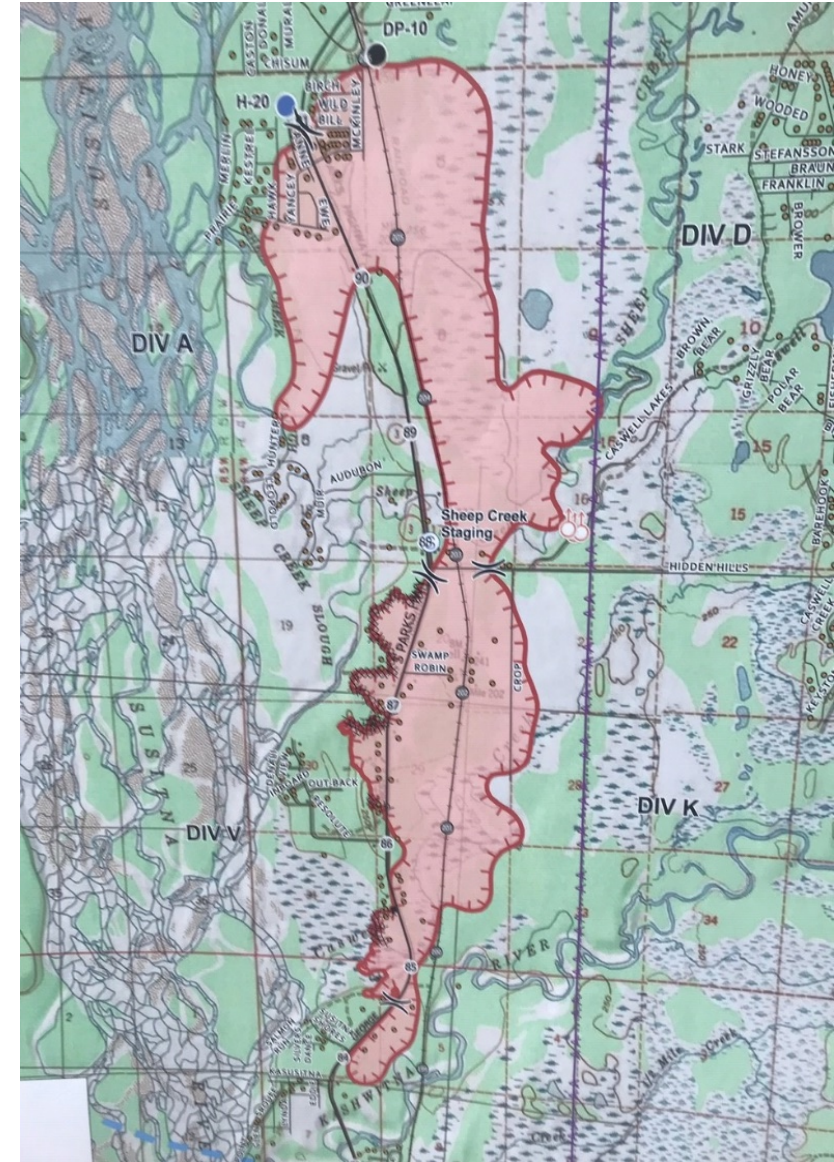


McKinley Overview

3,288 acre wildfire, started 8/17 a few hours before the Deshka Fire

Side Note: Division of Forestry had 109 fire pumps supported by 5-6 tenders

As of 9/03/2019: 3,288 acres at 95% containment with 536 personnel



McKinley Overview

Borough Agencies on Initial Response August 17, 2019

- Willow Fire
- Caswell Fire
- Central Mat-Su Fire
- Greater Palmer Fire
- West Lakes Fire
- Talkeetna Fire
- Butte Fire
- EMS
- Willow and Talkeetna CERT



McKinley Overview

Other Agencies on Initial Response August 17, 2019



Alaska National Guard
Alaska Railroad
Alaska Department of Transportation
Matanuska Electric Association
Alaska State Parks
Alaska State Troopers
Alaska State Fire Marshall
Red Cross of Alaska
Mat-Su Borough School District
Mat-Com/City of Wasilla

Salvation Army
Division of Forestry
JBER
Anchorage Fire Department
Chugiak Fire
City of Palmer Fire
City of Houston Fire
Wasilla/Palmer CERT
Fairbanks area strike team



Deshka Overview

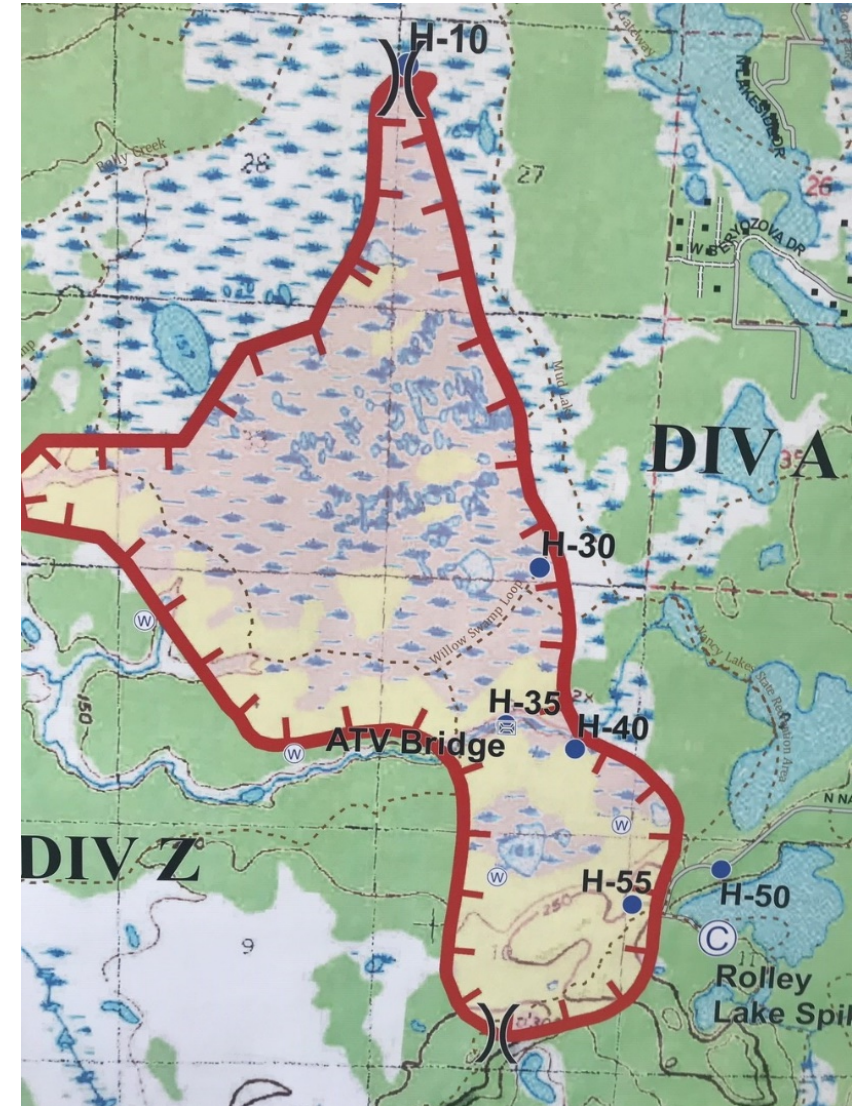
1,318 acre wildfire, started 8/17/19 a few hours after the McKinley Fire. Forestry handled the scene for this fire.

Agencies on Initial Response 8/17:

Division of Forestry (DOF)

- Tanana Crew (20)
- Jumpers from Alaska (20)
- Pioneer Peak Crew (7)

As of 9/02/2019: 1,318 acres at 95% containment with 217 personnel



Structures, Acres, and Evacuation Summary

McKinely Fire

- Acres Burned: 3,288
 - Fatalities: 0
 - People sheltered: ~ 100
 - People evacuated: 2,056
 - Total structures in evacuation area: 1,028
 - Total burned structures: 139
 - 52 of those were deemed residences (primary or secondary unknown)
 - 84 outbuildings
 - 3 commercial
- ~86% saved percentage for structures

Deshka Fire

- Acres Burned: 1,318
- Fatalities: 0
- Single Residences Threatened: 47
- Other Structures Threatened: 100
- People evacuated: 5

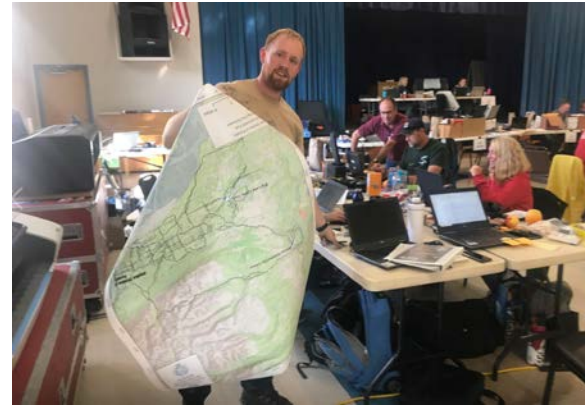


MSB Fire Comparisons

Fire	Acres	Structures Lost	Date
Millers Reach	37,000	344	June 2, 1996
Sockeye	7,220	100	June 14, 2015
Montana Creek	367	0	July 3, 2019
Malaspina Fire	85	0	July 7, 2019
McKinley Fire	3,288	139	August 17, 2019
Deshka Fire	1,318	0	August 17, 2019



EOC Activation



- **Level 3 activation- Director, EM, EM Staff, GIS, PIO, Call center, Position Specific as needed**
- **PIO-Stefan Hinman, Erin Leaders, Jack Horner, Pam Ness, (Kale Casey, Stephanie Bishop-DOF Share)**
 - Call Center-Erin Leaders, Vickie Lee Fenster, Tracy Woelfel, Talon Boeve (volunteers)**
- **GIS-Heather Kelly, Leah Jones, Kenny Kleewein**
- **EM Staff-Lou Friend, Eric Mohrmann, Tracy Woelfel, Talon Boeve**
- **Purchasing- Jeff Stevenson (DOF Share)**
- **Partnering Agencies-Red Cross, Salvation Army, MEA, AST, DOF, DOT, AKRR, DEC, Tour companies, CERT, COAD**



Evacuation Accountability Call Center (EvACC) was open 12 noon 8/19 – 8pm 8/24

The call center was set up on August 19, 2019 to accept phone calls from individuals self reporting as evacuated or calling to report a family member as unaccounted for.

- 606 calls were taken at the call center from August 19-24, 2019.
- The information received was given to the State.



Preliminary Damage Assessments

August 20, 2019

- EM staff and State Fire Marshal's office Deputies completed initial damage assessment
- Orion software used for tracking and starting assessment reporting



Owner Notifications August 23, 2019

- Met with property owners at 2 locations to inform them of property loss
- Assisted by Fire Marshal Office, AST, Red Cross, CISM team members including chaplains and counselors
- Date was selected due to logistics of verification of the list of affected properties



Recovery-Coordination/Advocacy

- State of Alaska DHS&EM
 - IFG/IA
- FMAG for fire suppression-DOF
 - Direct suppression and safety costs
 - Different than FEMA IA/PA
- COAD
 - Long Terms Recovery/Needs Committee
 - Donations management
 - Rebuilding
 - Team Rubicon-who are they?
 - Clean up
- Debris
 - Public Works-Solid Waste Division plan



Debris – Solid Waste Plan



Updated 8/27/2019

McKinley / Deshka Fire Debris Disposal

Debris caused by the McKinley / Deshka Fires will be accepted at no cost at the outlined locations below beginning Tuesday, August 27, 2019. In addition, the Willow Transfer Station will open an additional 2 days per week beginning August 28, 2019 (hours in red below). **Residents will be required to fill out and sign a fee waiver form.**

MSW REFUSE

Includes scorched or burned items, water damaged items, and spoiled foodstuffs

Accepted at:

- ✓ Central Landfill
- ✓ Big Lake
- ✓ Talkeetna
- ✓ Willow

SCRAP METAL

Fire damaged refrigerators, freezers, automobile parts & pieces (no auto bodies or frames), metal tanks (no compressed tanks)

Accepted at:

- ✓ Central Landfill
- ✓ Big Lake
- ✓ Willow

BRUSH & TREES

Includes scorched or burned brush, tree trunks or limbs (does NOT include lawn clippings or grass)

Accepted at:

- ✓ Central Landfill
- ✓ Big Lake
- ✓ Willow
- ✓ Sunshine Transfer Site

HAZARDOUS WASTE

Latex paint, batteries, oil, and antifreeze are accepted at Transfer Stations

For hazardous waste other than the items listed above, contact Solid Waste Environmental Unit at 861-7604

All loads brought to a Transfer Station must be less than 5 cubic yards and 8' in length. For commercial quantities of waste (over 5 cubic yards) or questions about fire debris, please call Solid Waste at 907-861-7600. www.MatSuGov.us

	SUN	MON	TUE	WED	THU	FRI	SAT
Central Landfill	8-5	8-5	8-5	8-5	8-5	8-5	8-5
Big Lake	10-5	10-5	10-5			10-5	10-5
Willow	10-5			10-5	10-5	10-5	10-5
Talkeetna		10-5	10-5			10-5	10-5
Sunshine	10-3						



DHS&EM Damage Assistance Centers/Assessments

- Starting Sept. 4 in two locations with the Red Cross
- Will run for 2 weeks
- Applications can be in person, online or by phone
- Transition into site inspections with DHS&EM staff/MSB Staff



Moving Forward

- Point of Contact with the State DHS&EM for any IA/PA
 - Emergency protective measures
 - MSB Infrastructure damages
 - Debris management costs
 - Partner and assist MEA, AKRR, DOT, AST with their program with the State
 - Work with finance to complete and close the program down
- Support and participate with unmet needs/COAD
- MSB Mitigation options/programs applications and delivery





Questions?