

# MAT-SU BOROUGH EMERGENCY MEDICAL SERVICES

RE-ORGANIZATION PROPOSAL – 2019



# OVERVIEW

## ■ History

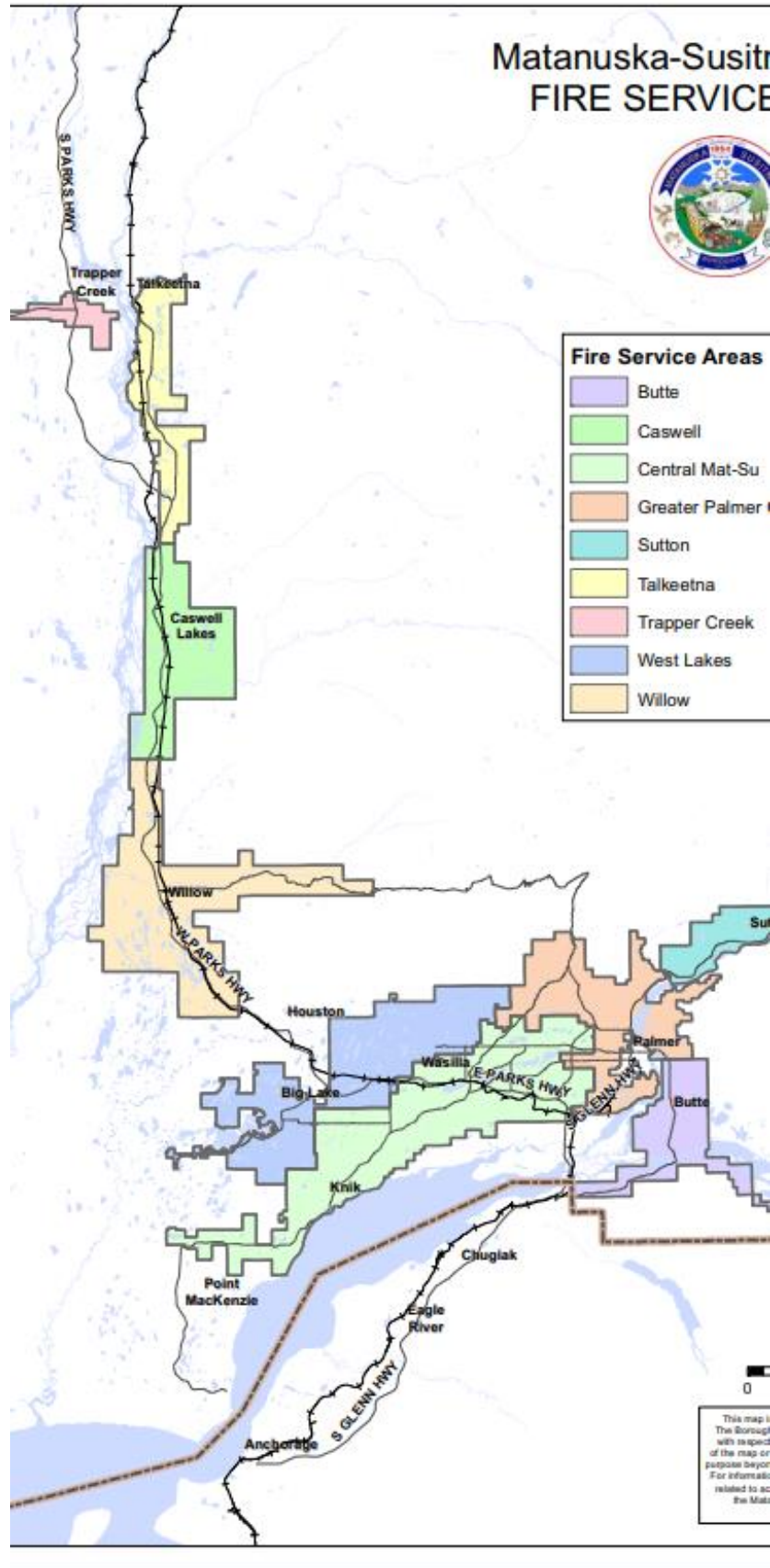
- 25,258 square miles
- Population 106,532 (2018)
- Mix of commercial, rural and super-rural
- EMS call volume more than double since 2010
  - Traditional Model (Volunteer / On-Call based) stressed
  - Unpredictable scheduling.
  - Inconsistent compliance and competence

## ■ Impact

- Availability limited to four staffed ambulances
- Low return on recruiting / training investment







# GROWTH & DISTRIBUTION

- **All populations areas of the Borough are increasing at 2 – 4 times the state average.**
- In the last 25 years, Mat-Su has averaged 3.4% growth / year, versus 1.2% for the state.
- “We project the strongest growth for the Anchorage/Mat-Su Region, with Matanuska-Susitna Borough’s population projected to increase by more than 80 percent over the period.”

SANDBERG, E. (2016, MARCH). SETTLEMENT OF THE MAT-SU: HOW ALASKA'S FASTEST GROWING BOROUGH CAME TO BE. ALASKA ECONOMIC TRENDS, PP. 12-17. RETRIEVED FROM [HTTP://LABOR.ALASKA.GOV/TRENDS/MAR16.PDF#ART2](http://labor.alaska.gov/trends/mar16.pdf#art2)

ALASKA DEPARTMENT OF LABOR AND WORKFORCE DEVELOPMENT. (2016). ALASKA POPULATION PROJECTIONS: 2015 TO 2045. RETRIEVED FROM [HTTP://LIVE.LABORSTATS.ALASKA.GOV/POP/PROJECTIONS/PUB/POP PROJ.PDF](http://live.laborstats.alaska.gov/pop/projections/pub/popproj.pdf)



Mat-Su Borough - 17%  
population growth  
over ten years.

79% increase in  
EMS calls  
Borough-wide



Future - 80%  
projected population  
growth in next 25  
years

353% increase  
in EMS calls  
Borough-wide



**Population growth of 3% / year =  
est. 14% increase in EMS call  
volume / year.**

TRANSLATION:  
2010 – 2018

**79% INCREASE  
IN EMS CALLS  
BOROUGH-  
WIDE**

# HOW MANY CALLS DOES THAT EQUAL?

Area	2007	2018	Increase
Central	2858	4838	69%
Palmer	1098	1677	53%
Lakes	541	1778	229%
Butte	303	371	22%
Sutton	108	152	41%
Willow	142	208	46%
Talkeetna	93	188	102%
Trapper Creek	85	131	54%
<b>TOTALS:</b>	<b>5228</b>	<b>9343</b>	<b>79%</b>

# OPERATIONS TEMPO

Year

Daily Call  
Volume

2010

11 / day

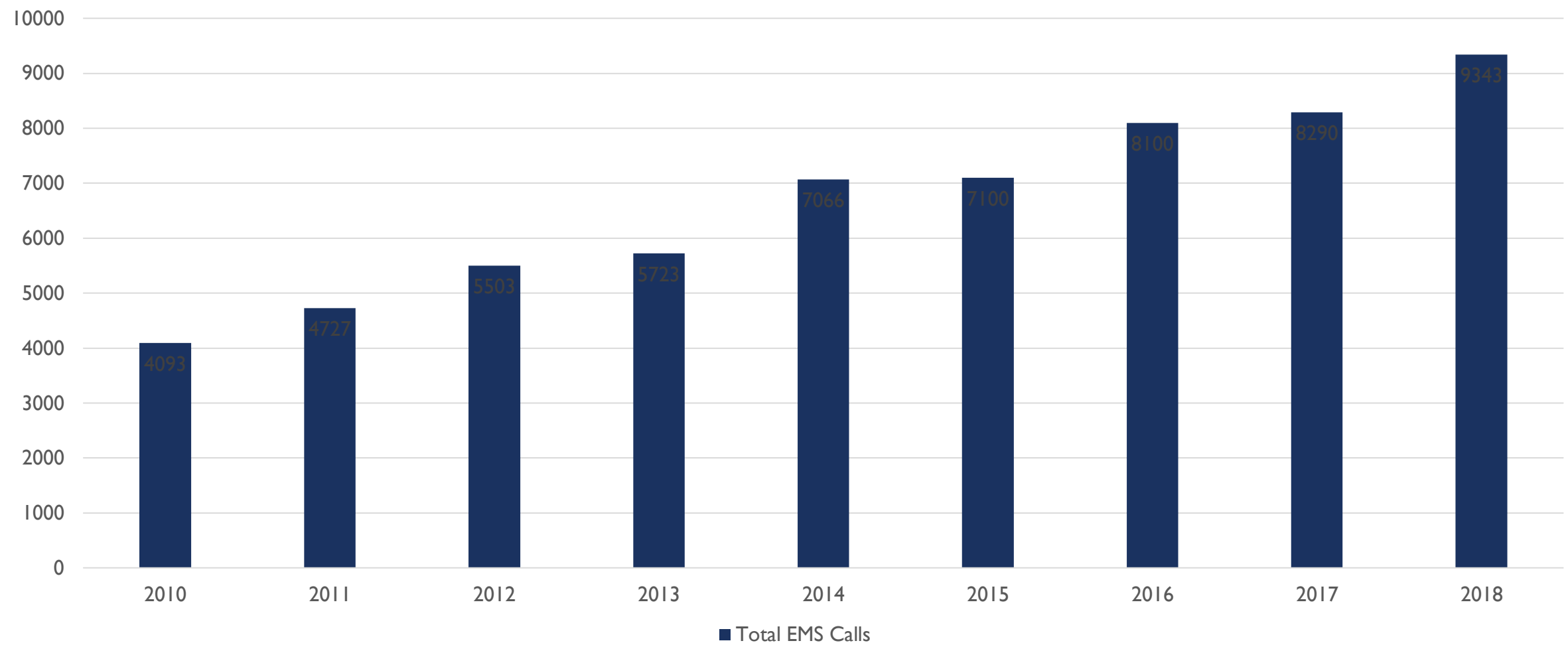
2018

26 / day

Increase

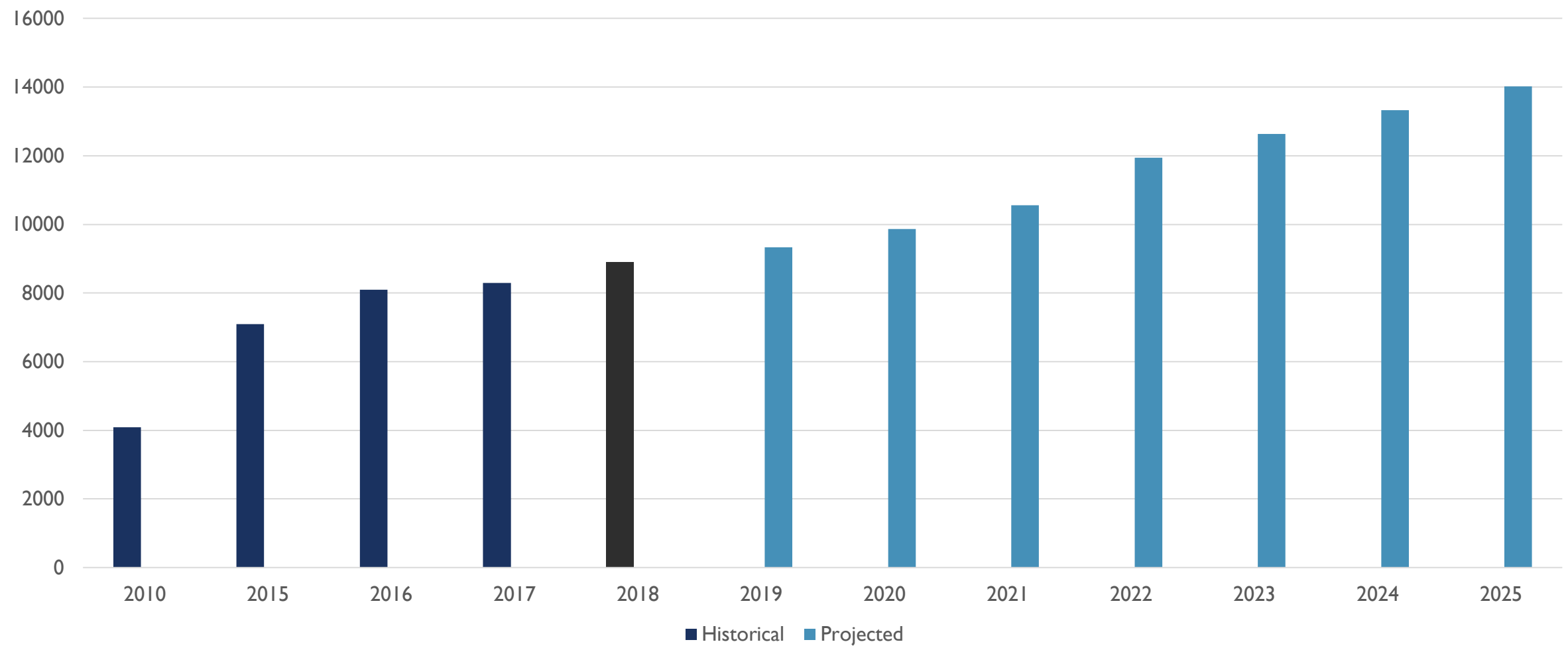
136%

Total EMS Calls



# HOW MANY MORE CALLS NEXT YEAR?

Projected 911 Call Volume

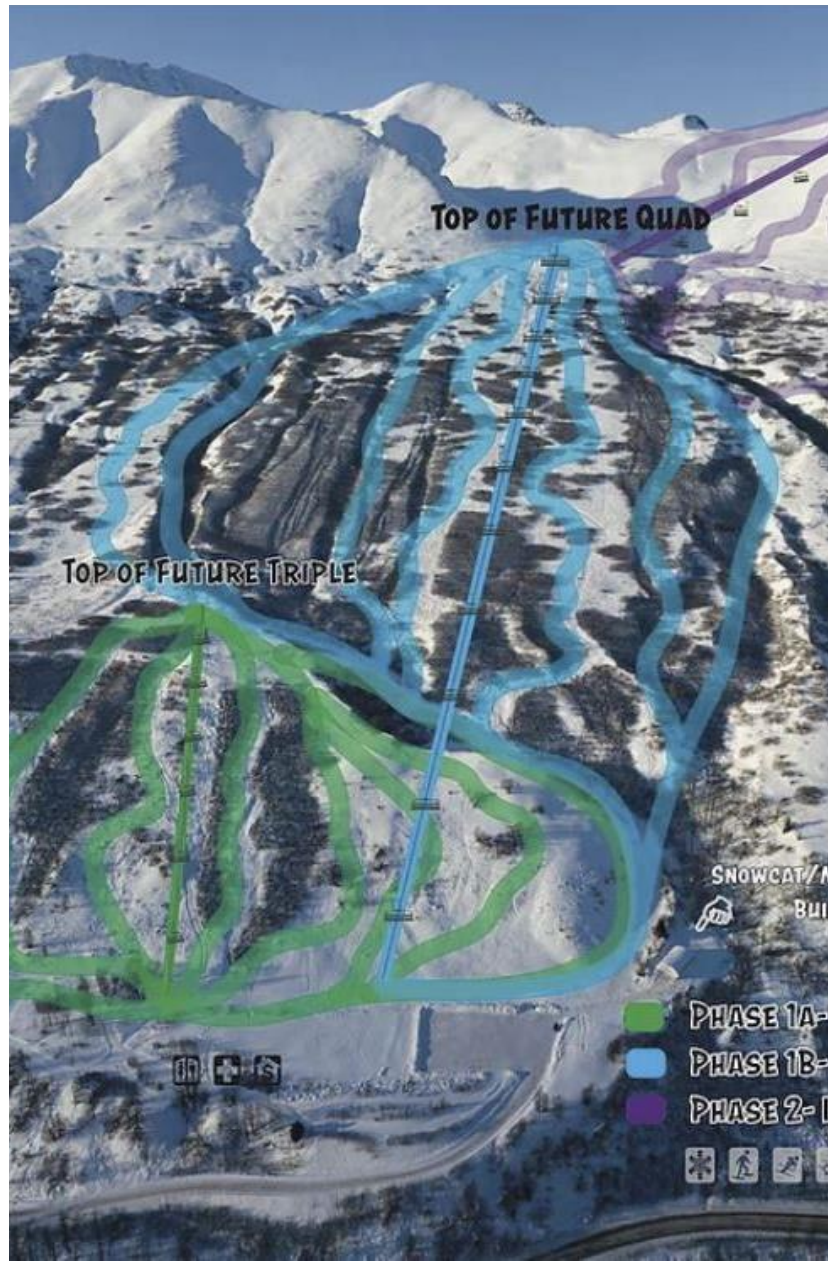






# SURGE FACTORS

- Multiple Casualties (MVCs)
- Natural Disasters
  - Fire / Earthquake / Flood
- ALF / SNF – Senior Housing
  - Maple Springs, Sun Mountain
- Tourism (> 350,000 / year)
  - Alaska State Fair
  - Skeetawk Ski Area
  - Princess
- Commercial growth







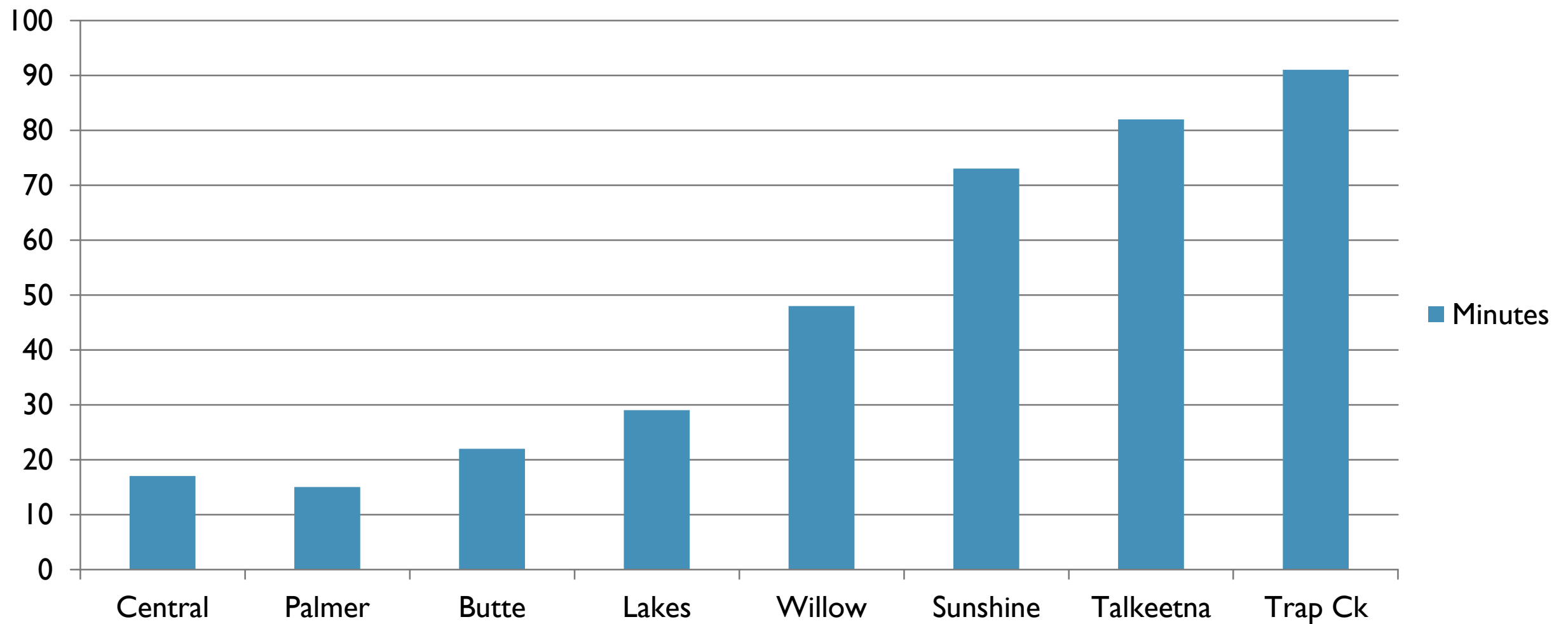
# MITIGATION

- Are there ways to reduce the number of calls?
  - MSRMC – HUMS
  - CIT
  - MSHF – Community Paramedicine
  - MS Senior Services



# HOSPITAL TRANSPORT TIMES

## One Way + Patient Care





Northern  
areas, average  
roundtrip time  
-196 minutes.

Mixed  
resource use  
for single call,  
limited  
availability for  
surge.

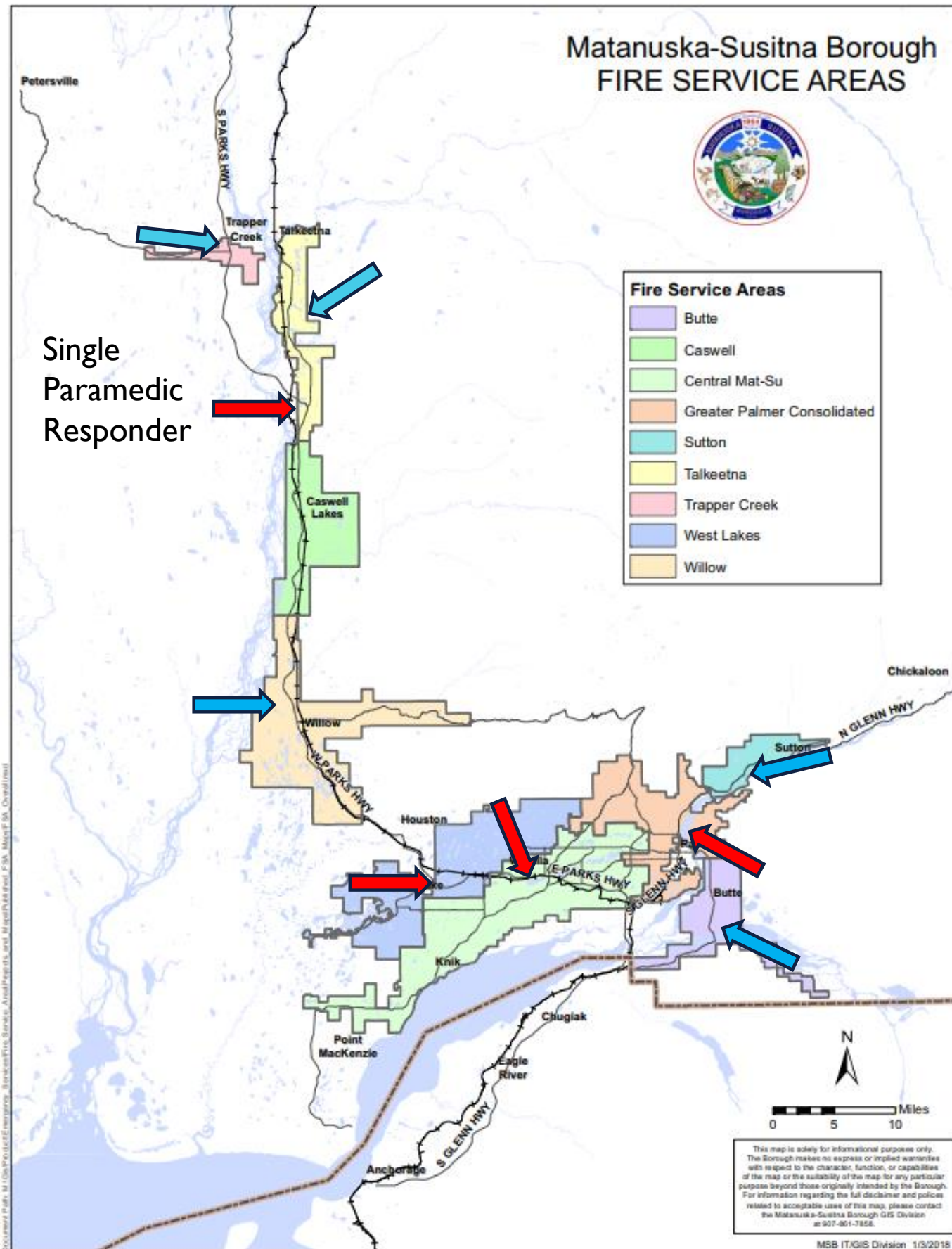
Backfill causes  
domino effect.

Unable to  
adjust for  
seasonal  
population  
changes.

THE  
TYRANNY  
OF  
DISTANCE

WHY THIS  
MATTERS





RED – STAFFED

BLUE – OC

# WHAT DOES IT TAKE?



## No Previous Experience

EMT Class – 120 hours

CPR – 4 hours

CEVO – 8 hours

Internship – 240 hours

Total Time – 6 Months



## Training Requirements\*

EMT – 48 hours

Paramedic – 120 hours

***\*These represent minimum requirements only, and do not account for any individual availability or additional agency training requirements.***

# THE ASK

- Hire 17 EMT-2s
- Hire 8 Paramedics
- Convert parts of the OT and OCR budget into wages / benefits.
- Maintain the paid On-Call system.





# THE RESULT



6 Paramedic-level staffed ambulances 24/7.



Predictable schedule and structure.



Increased competency and capability.

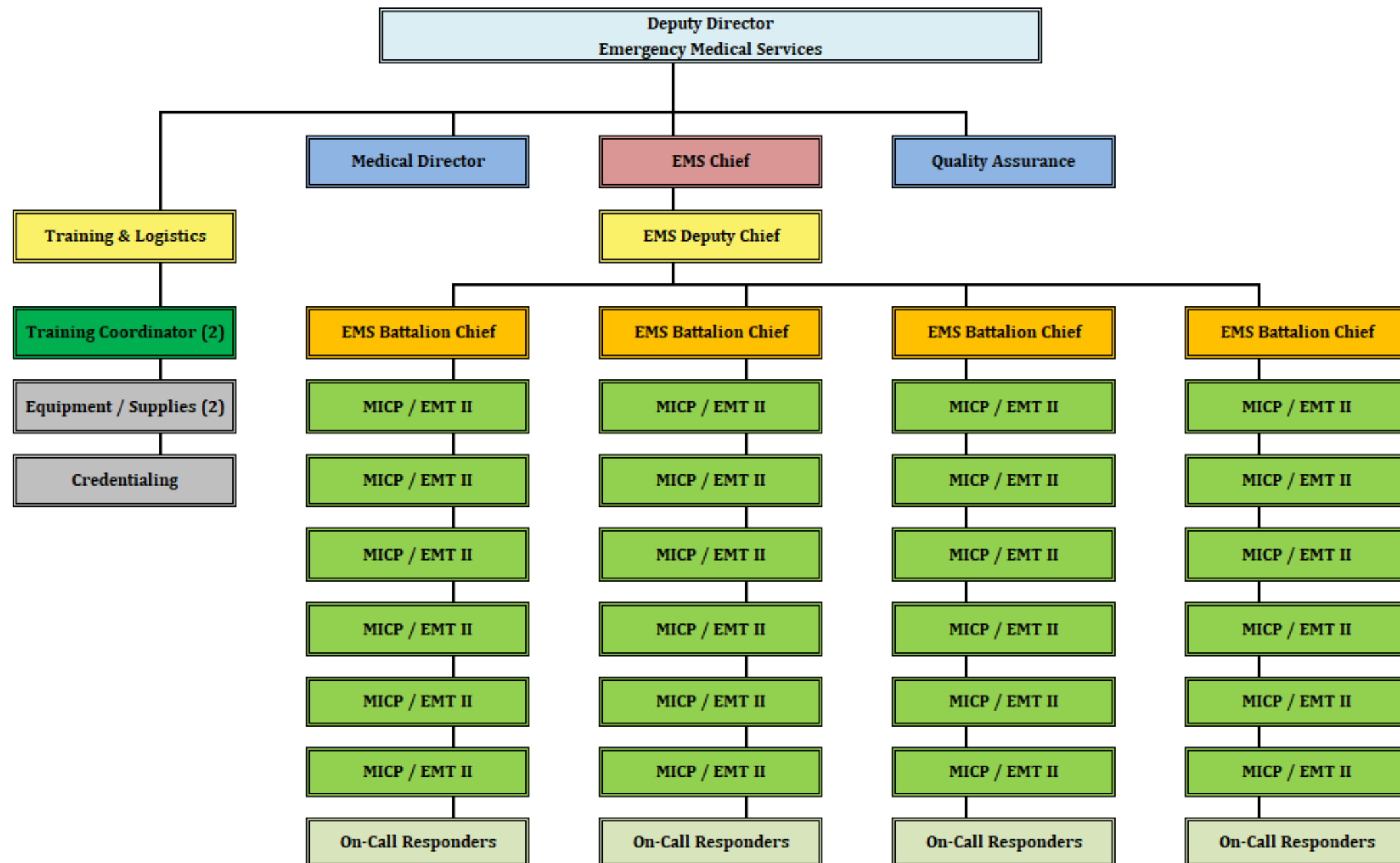


Assurance of available resources for the rural areas.



Better recruitment and retention, decreased hiring costs.

# ORGANIZATIONAL STRUCTURE





# IS IT ENOUGH?

- Call volume will continue to increase.
- Advance planning now will save lives.
- Our responders the need support.



2016 Steven Heyano Photography







QUESTIONS?

