



SUBJECT: A resolution amending the scope of work for the Aerial Imagery Acquisition Program Project Fund 47519.


AGENDA OF: 8-7-18

Assembly Action:

Approved under the Consent Agenda
8-7-18 

MANAGER RECOMMENDATION: Present to the Assembly for consideration.

APPROVED  BY JOHN MOOSEY, BOROUGH MANAGER: 

Route To:	Department/Individual	Initials	Remarks
	Originator - IT Director	JM	7-25-18
	Finance Director	CY	
	Borough Attorney	JA for N.S.	
	Borough Clerk		

ATTACHMENT (S): Fiscal Note: YES _____ NO X
Resolution Serial No. 18-061 (2 pp)
Imagery & Elevation Data Acquisition Cycle

SUMMARY STATEMENT: On June 2, 2015, the Assembly approved Ordinance No 15-078 that approved re-appropriating funds from the Information Technology operating budget for a multiyear Aerial Imagery Acquisition Program Project Fund 47519. In the fiscal year 2016, 2017, 2018 Capital Improvement Budget submissions, the Assembly approved additional funds into this Project Fund.

During the development of this project plan, additional acquisition methods (such as LiDAR) and derivative products (such as contours, building footprints) were identified as required by users within Borough departments and the public as part of a recurring Aerial Imagery Acquisition Program.

Amending the scope of work for Project 47519 to also include the collection of elevation data (e.g. LiDAR) as well as the development of derivative products will provide the ability to meet the needs of users.

MSB Imagery & Elevation Data Program Cycle

Cycle 1 : 2019 – 2021

Year 1

Aerial Imagery & Elevation (LiDAR) Data
Area 1 - Core Area

Port MacKenzie & Rail, Knik, Houston, Big Lake, Wasilla,
Palmer, Butte, Sutton, Chickaloon, Glacier Viewer, Eureka

Year 2

Aerial Imagery & Elevation (LiDAR) Data
Area 2 – Park Hwy Corridor

Willow, Caswell Lakes, Talkeetna, Trapper Creek

Year 3 – Collect Aerial Imagery Only
Area 3 – Area Changes Each Cycle
Cycle 1 will likely focus on
Petersville Rd & Oilwell Rd

Cycle 2 : 2022 – 2024

Year 1

Aerial Imagery Only
Area 1 - Core Area

Port MacKenzie & Rail, Knik, Houston, Big Lake, Wasilla,
Palmer, Butte, Sutton, Chickaloon, Glacier Viewer, Eureka

Year 2

Aerial Imagery Only
Area 2 – Park Hwy Corridor

Willow, Caswell Lakes, Talkeetna, Trapper Creek

Year 3
Aerial Imagery Only
Area 3 – Area Changes Each Cycle
Area TBD

Cycle 3 : 2025 – 2027

Year 1

Aerial Imagery & Elevation (LiDAR) Data
Area 1 - Core Area

Port MacKenzie & Rail, Knik, Houston, Big Lake, Wasilla,
Palmer, Butte, Sutton, Chickaloon, Glacier Viewer, Eureka

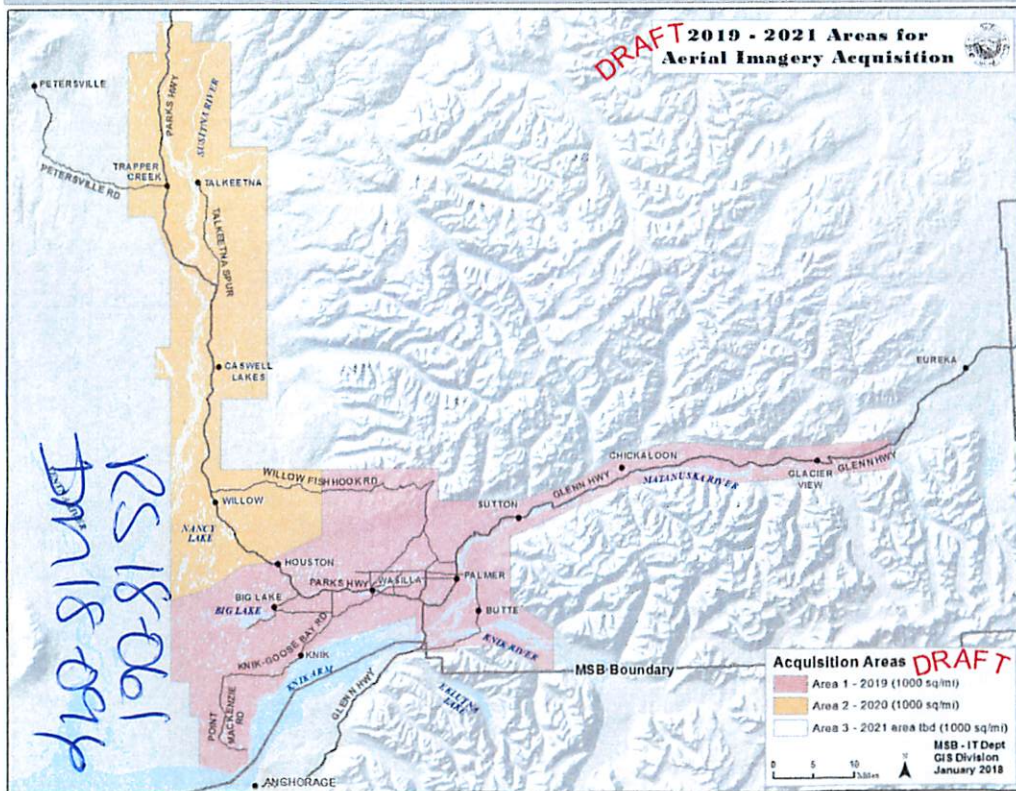
Year 2

Aerial Imagery & Elevation (LiDAR) Data
Area 2 – Park Hwy Corridor

Willow, Caswell Lakes, Talkeetna, Trapper Creek

Year 3
Aerial Imagery Only
Area 3 – Area Changes Each Cycle
Area TBD

Cycle 1 : 2019 – 2021 Map



The Imagery & Elevation Data Program Cycle will provide updated imagery in Areas 1 & 2 every three years.

It will also provide updated elevation data (LiDAR) in Areas 1 & 2 every six years.

Year 3 of each cycle will move around to different locations, and provide only imagery for areas that haven't been collected in quite some time. For example, Petersville Road, Oilwell Road, Lake Louise, Skwentna, etc.

