

SUBJECT: INFORMING THE ASSEMBLY OF A MEMORANDUM OF AGREEMENT BETWEEN THE STATE OF ALASKA DEPARTMENT OF TRANSPORTATION AND PUBLIC FACILITIES AND THE MATANUSKA-SUSITNA BOROUGH THAT WILL BE PRESENTED TO THE BOROUGH MANAGER FOR SIGNATURE FOR THE TRANSFER OF LOCAL ROADS TO THE BOROUGH IN CONNECTION WITH THE ALASKA DEPARTMENT OF TRANSPORTATION AND PUBLIC FACILITIES INSTALLATION, OPERATIONS AND MAINTENANCE OF LIGHTING AS PART OF THE GLENN HIGHWAY 34-42 PROJECT.

AGENDA OF: August 17, 2021

ASSEMBLY ACTION:

presented to the assembly

(Signature)

MANAGER RECOMMENDATION: For information only.

APPROVED BY MICHAEL BROWN, BOROUGH MANAGER:

MB

Route To:	Department/Individual	Initials	Remarks
	Originator, Brad Sworts	<i>BS</i>	
	Public Works Director	<i>TD</i>	<i>9 Aug. 2021</i>
	Finance Director	<i>CF</i>	
	Borough Attorney	<i>NS</i>	<i>Form only Pending final agreement</i>
	Borough Clerk	<i>DM 8/9/21</i>	<i>KBS</i>

ATTACHMENT(S): Memorandum of Agreement (5 pp)
Exhibit A (1 pp)

SUMMARY STATEMENT: The purpose of this legislation is to inform the Assembly that the Borough Manager will be asked to sign a Maintenance and Operations Memorandum of Agreement (MOA) between the State of Alaska, Department of Transportation and Public Facilities (ADOT&PF) and the Matanuska-Susitna Borough (Borough) for the transfer of local roads to the Borough in connection with the ADOT&PF installation, operations, and maintenance of lighting as part of the Glenn Highway MP 34-42 project.

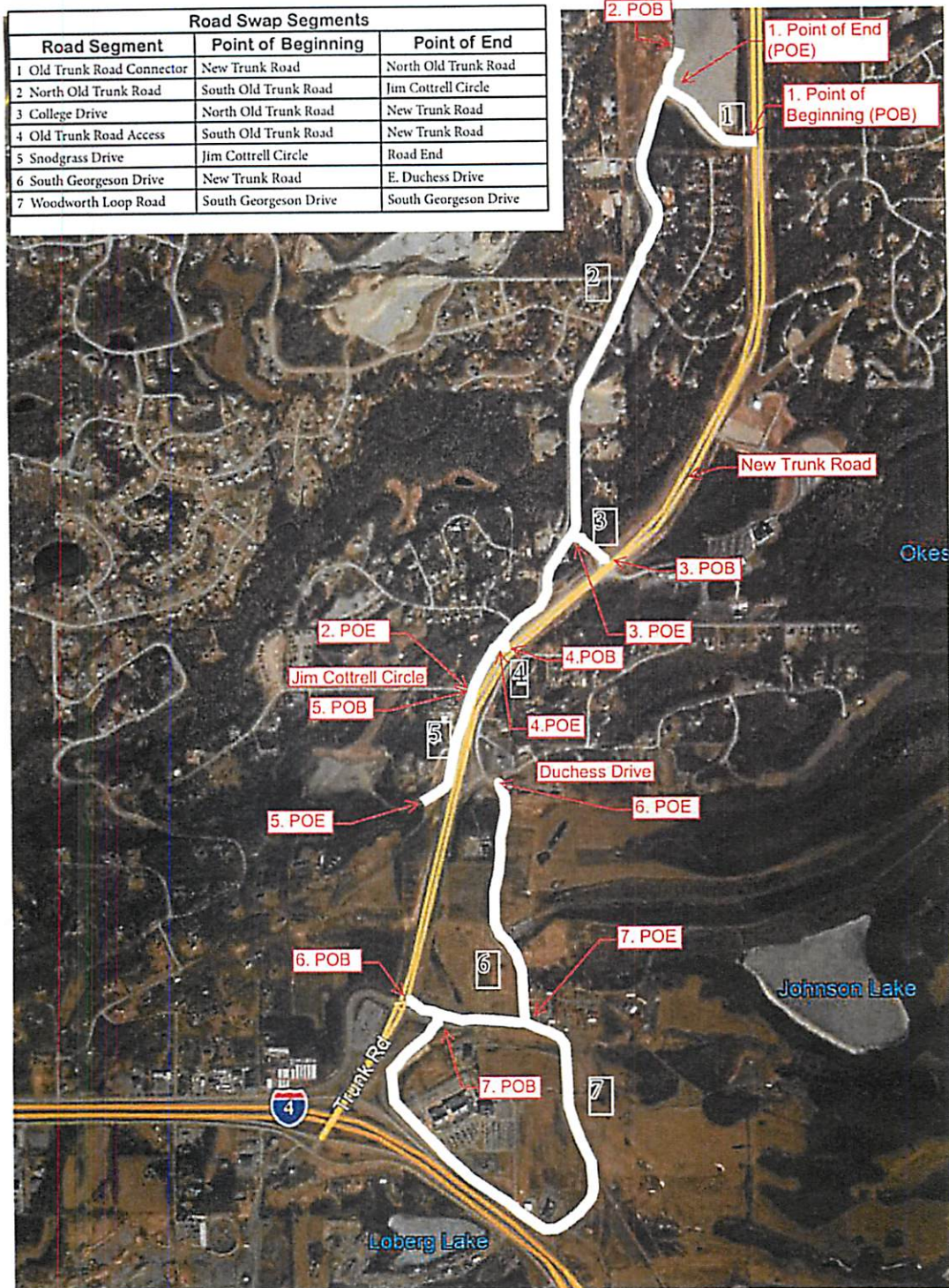
The Borough has requested the ADOT&PF to plan, design, install, operate and maintain continuous lighting for 3.5 miles of the Glenn Highway MP 34-42 project located with the boundaries of the Borough.

The ADOT&PF agrees to construct, operate and maintain the lighting in accordance with the provisions contained within the Project documents and plans.

Borough staff will review and provide input to the ADOT&PF's decisions regarding the locations, design and specificities of the lighting prior to construction and agree that the cost of operating and maintaining the Glenn Highway lighting is comparable to the cost of operating and maintaining the designated lane mileage of Old Trunk Road, Snodgrass Drive, a Trunk Road Access connection, College Drive west of the new Trunk Road alignment, South Georgeson Drive and Woodworth Loop (See Exhibit A).

This work, and agreement, will serve the public interest and enhance the quality of life for the residents of, and visitors to, the Borough.

Exhibit A



1m 21-173

**AGREEMENT
STILL
BEING
NEGOTIATED**