

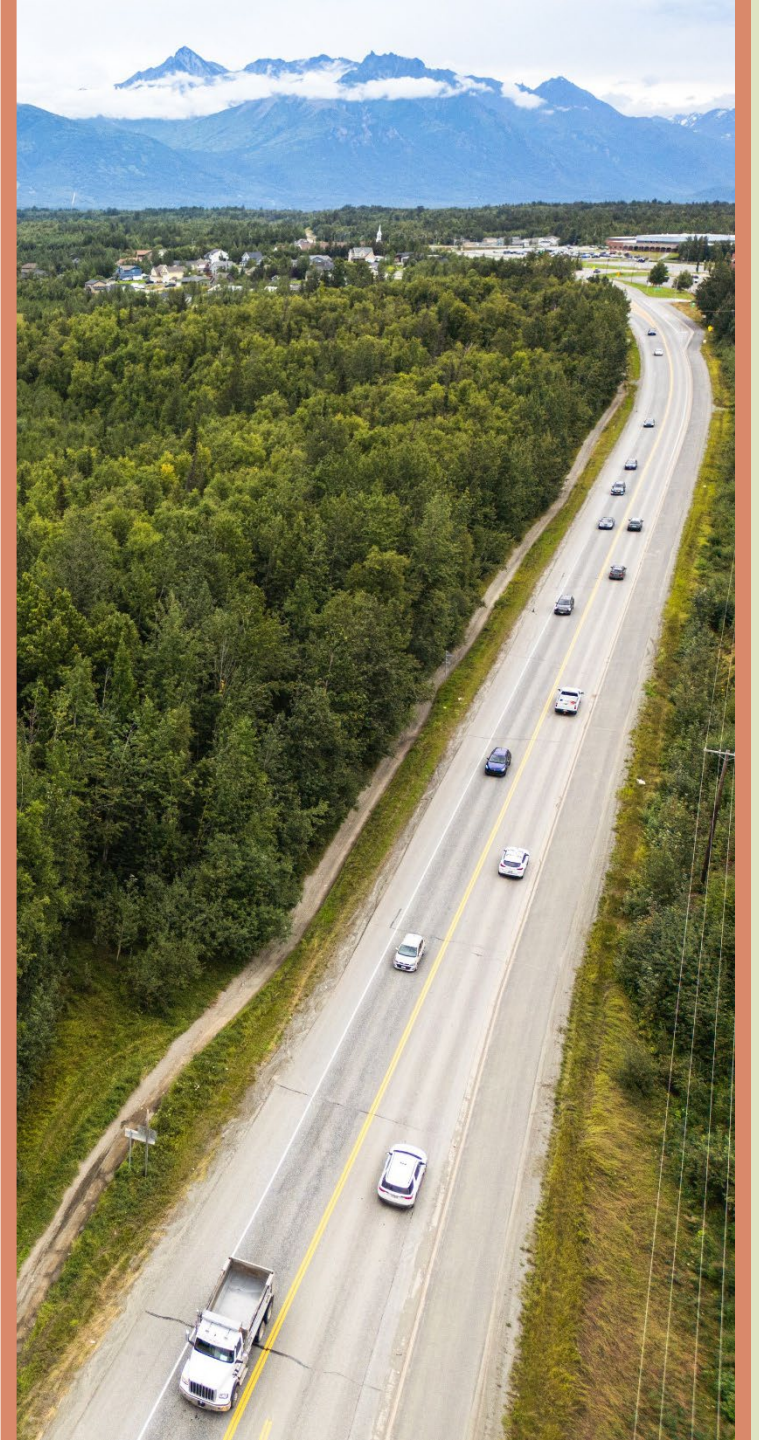


**MATSU VALLEY**  
PLANNING *for*  
TRANSPORTATION

# Metropolitan Transportation Plan

---

Project Nomination Period



01.

# Introducing MVP

An MPO



# What is a Metropolitan Planning Organization?

- A Metropolitan Planning Organization (MPO) is a **federally funded transportation planning and policy-making organization**.
- MPOs are required for any **urbanized area with a population greater than 50,000**.
- **MPOs develop short- and long-range plans** for a local transportation system, including roads, public transit infrastructure, and bike and pedestrian facilities. The plans created by the MPO guide Federal transportation infrastructure investments.
- There are **459 MPO's in the United States** today. MVP is the **3<sup>rd</sup> MPO in Alaska**.





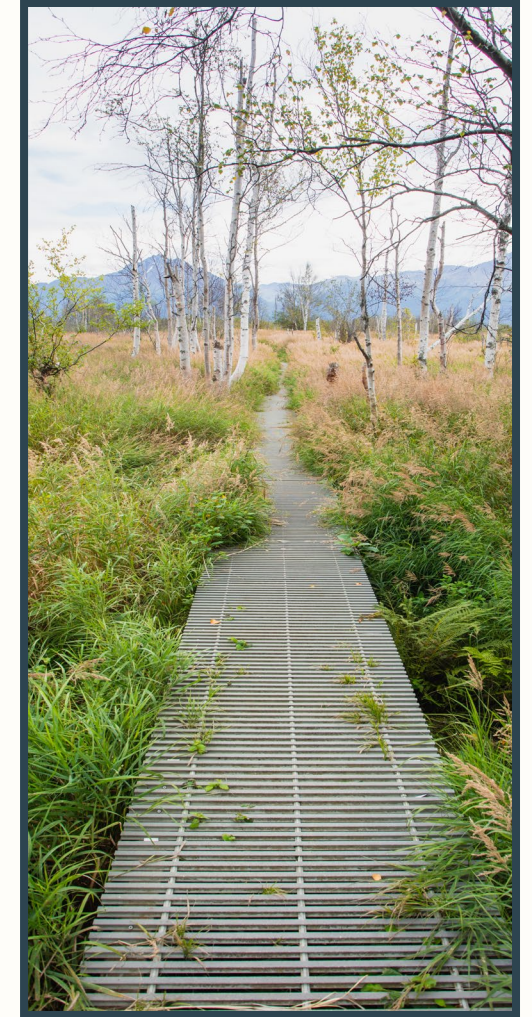
# Who is MVP?

---

## We are:

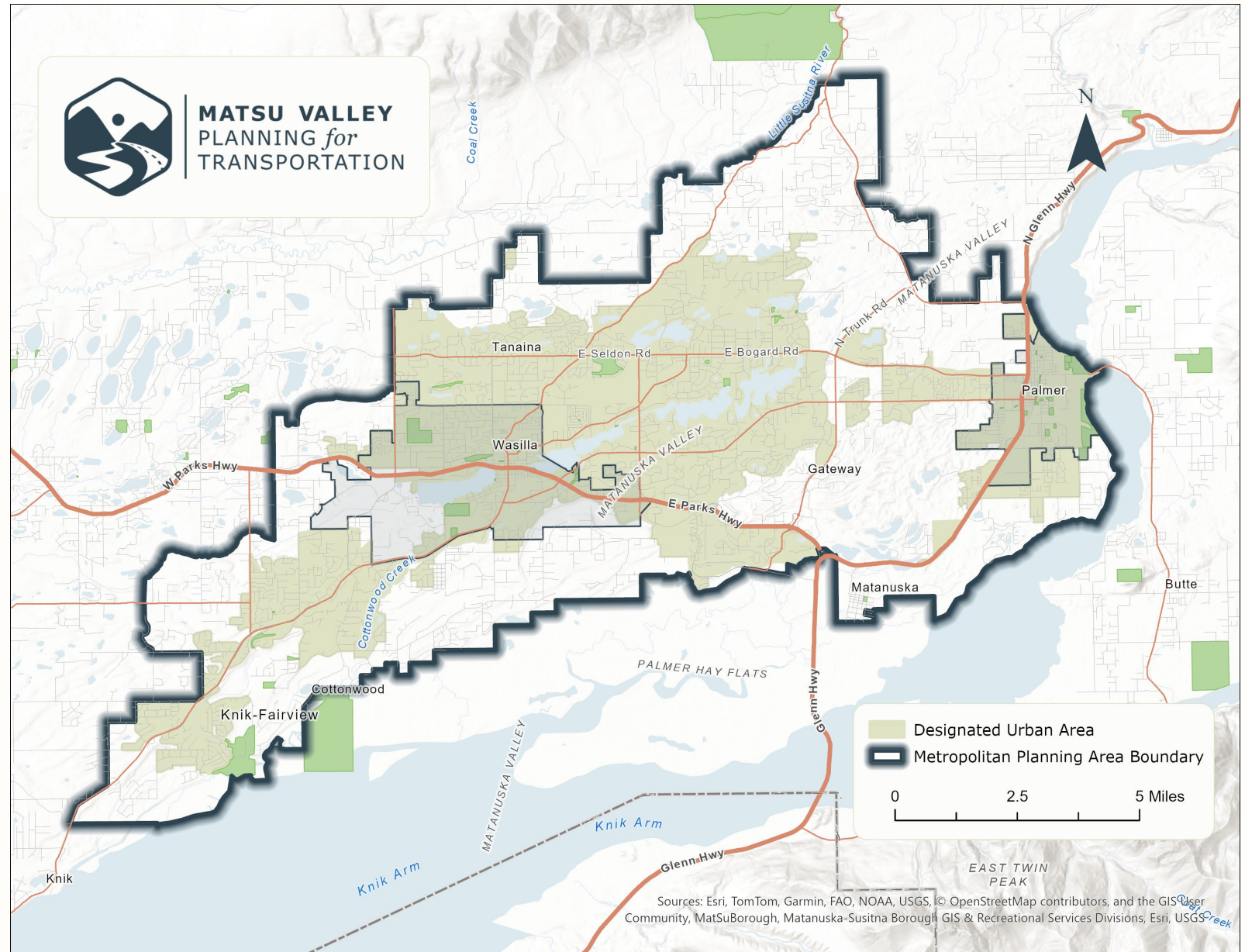
- A **non-profit**, Metropolitan Planning Organization (MPO) formed on February 14, 2024
- **Federally required** for transportation funding
- Governed by a board of 7-member policy board **elected and appointed representatives of each regional government**
- Supported by a 16-member technical committee

MVP brings **local voices** together to guide the Mat-Su Valley's transportation future and ensure federal funding is invested where it matters most.



The MVP Metropolitan Planning Area (MPA) boundary includes the designated **urban area**, plus what we **expect to become urbanized** over the next 20 years.

- About **73,000 people** live within the MPA
- Approximately **926 road miles**





# 02.

## What is an MTP?

What should our transportation system look like?



# What is a Metropolitan Transportation Plan?

- A **long-range (20+ year) regional plan** for transportation investments and priorities
- Guides **regional decision-making** for roads, transit, bike/ped, and freight
- Ensures transportation investments **support regional goals**
- **Federally required**
- Updated every 5 years

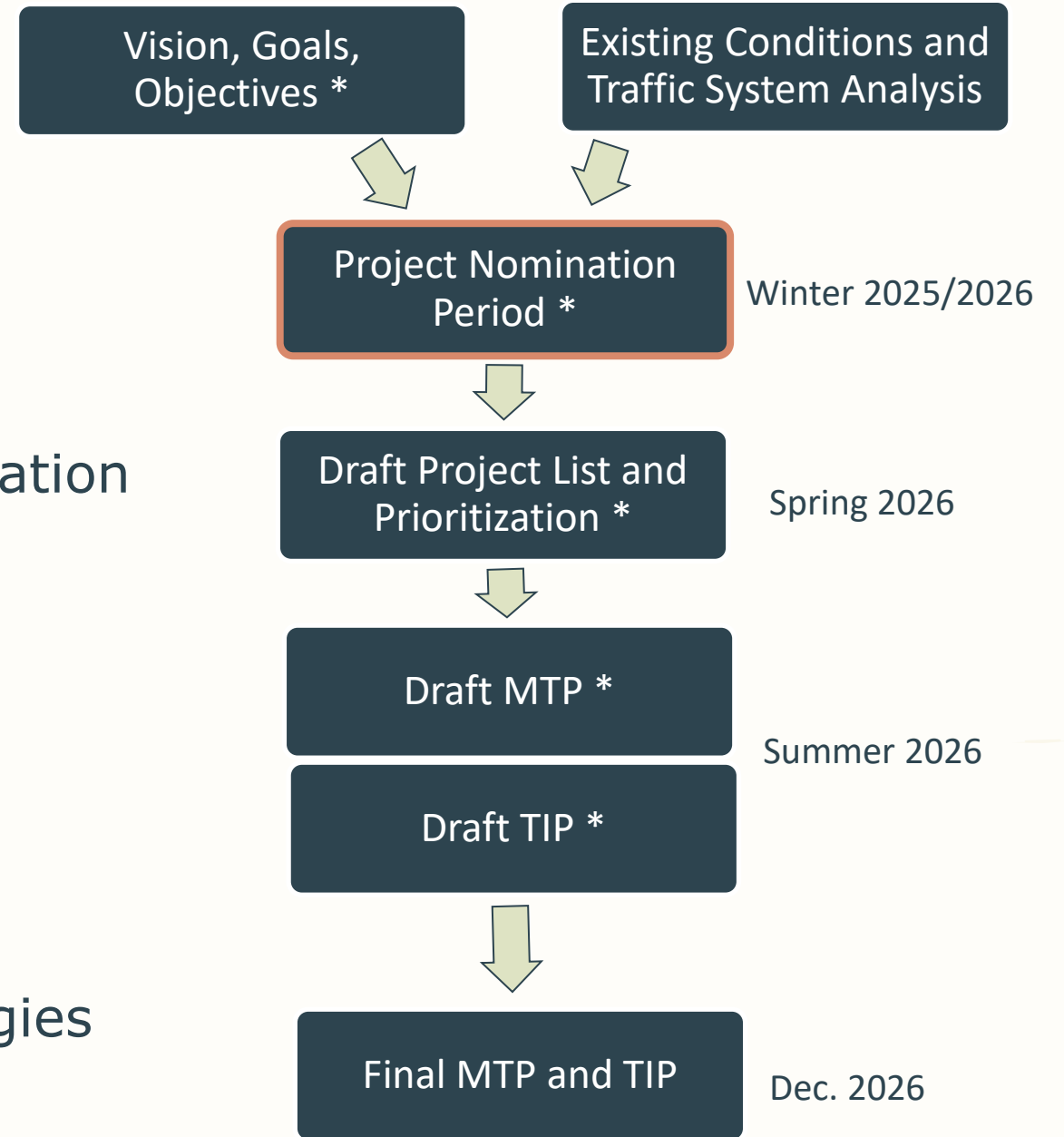




# The MTP Process

## Key Parts of the MTP:

- Vision, Goals, and Objectives
- Assessment of the existing transportation system
- Current and projected transportation demand
- Performance measures and targets
- Proposed projects
- Fiscal plan
- Operational and management strategies



\*public involvement opportunity



# Vision & Goals

## VISION

Matsu Valley Planning for Transportation is committed to creating a safe, efficient, and multimodal transportation system that fosters reliable and accessible options for all modes of travel, supports the economy and the environment, and promotes healthy communities.

## Goals

---

- Ensure transportation improvements align with **local land use patterns** and **connect housing to employment**
- Improve transportation **safety for all modes**
- Leverage all available **funding** resources
- Maintain the system in a **state of good repair**
- Create opportunities for more **diverse transportation** options
- **Shorten commute times** and **improve mobility**
- Build a **resilient** transportation network

# 03.

## **Project Nomination Period:** How to Get Involved





# Project Nomination Period Phases

---

- **Phase 1 – Public Engagement**
  - Dec. 1, 2025 – Jan. 31, 2026
  - Open House (Dec. 3, 2025)
  - Public Presentations
  - Interactive Comment Map
  - Transportation Survey
- **Phase 2 – Formal Project Nominations**
  - Begins January 28, 2026
  - Project nominations must be submitted in online form
- **Phase 3 – Project Evaluations**
  - Spring 2026



# Phase 2: Formal Project Nominations

---

- MVP anticipates approximately **\$10 million of federal funds annually** over the 20+ year horizon of the MTP to support projects
- Projects **must be included in the MTP** to be programmed through the **Transportation Improvement Program (TIP)**
- **Types of projects to nominate** might include:
  - Intersection improvements
  - New road construction
  - Road resurfacing, restoration, rehabilitation
  - Separated pathways/ nonmotorized infrastructure improvement
  - Transit system improvements





# Thank You!



**MATSU VALLEY**  
PLANNING *for*  
TRANSPORTATION

**Contact Us:**  
[info@mvpmpo.com](mailto:info@mvpmpo.com)  
[Mvpmpo.com](http://Mvpmpo.com)