

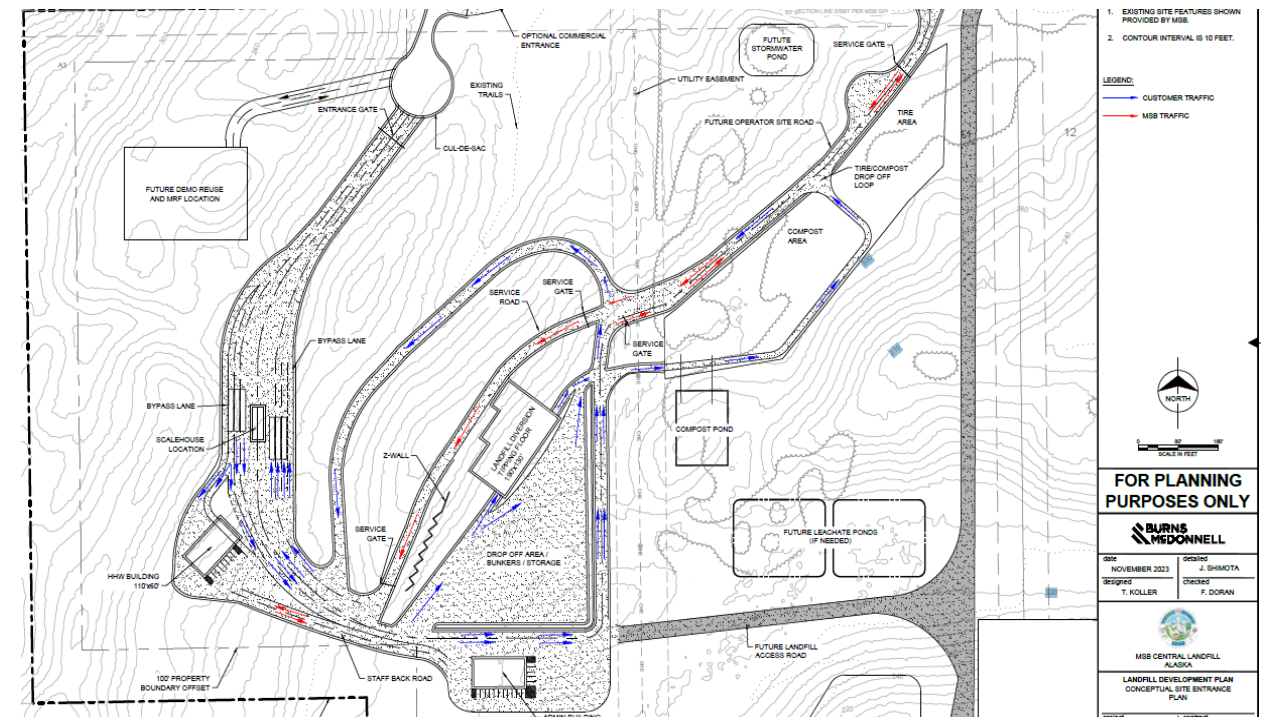
# MATANUSKA-SUSITNA BOROUGH SOLID WASTE DIVISION

## RATES AND FEES



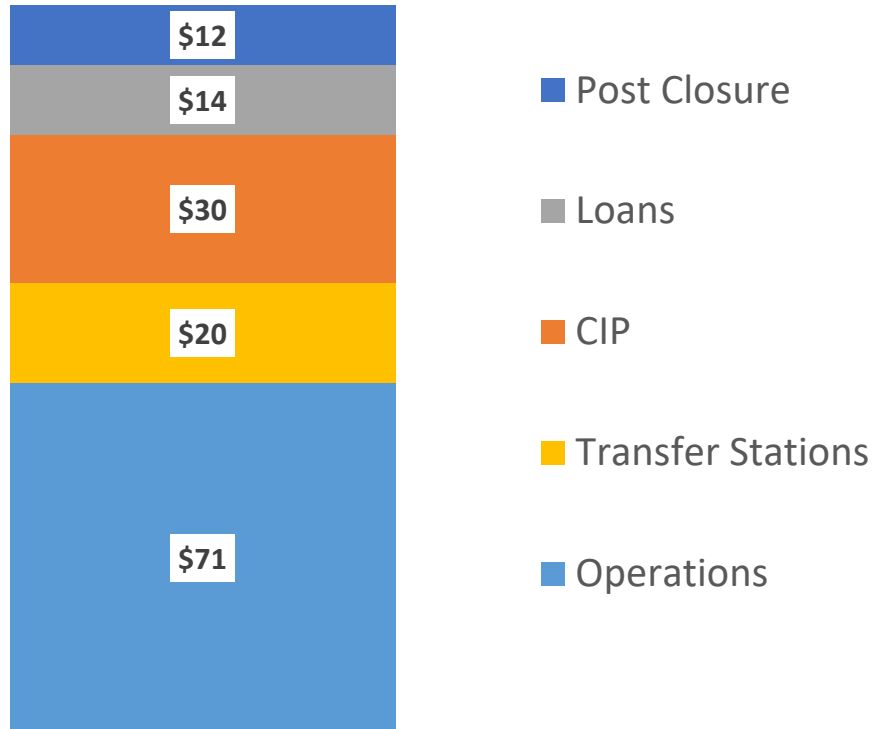
- Spring 2024 – New road to landfill complete
- Summer 2024 – Construct new tipping facility
- Fall 2024 – Expand Cell 4 adding 4 years of life
- Fall 2024 – Start a glass collection program with VCRS
- December 2024 – Leachate Evaporation system
- Spring 2025 – Start a new compost program
- Spring 2025 – Open new tipping facility
- Summer 2025 – Implement a C&D reuse program

## PROJECTS AND UPDATES



## HOW ARE FEES USED

Where do the fees go?

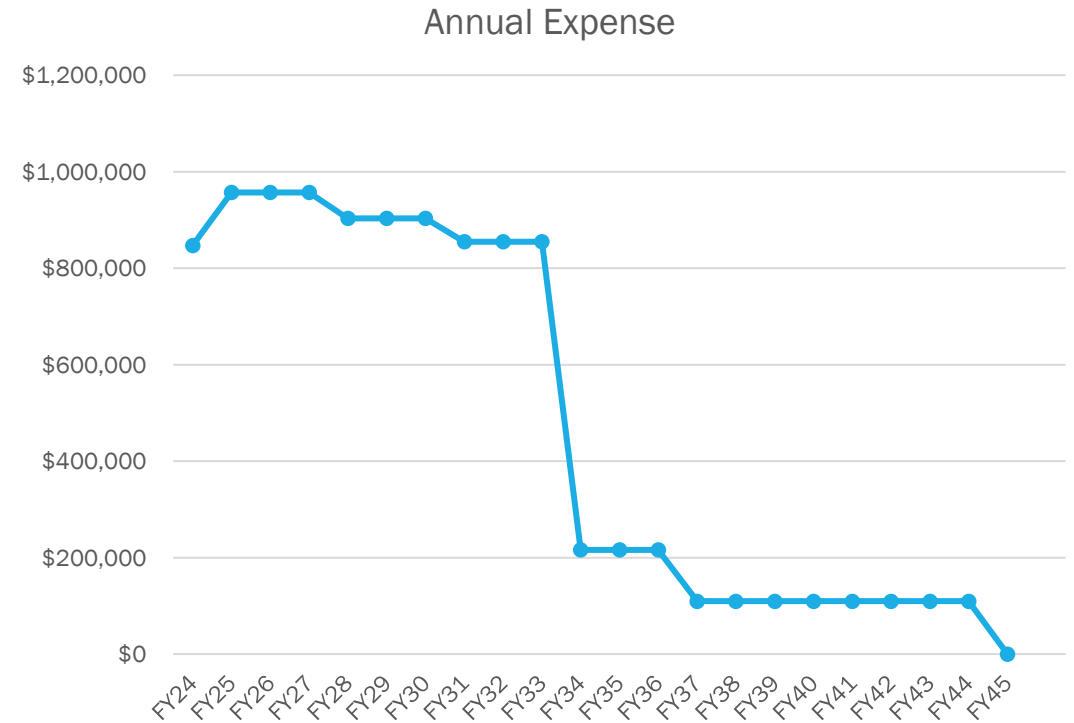


- Post Closure – a Federally required reserve for final closure of the landfill
- Loans – See next slide
- CIP – Capital costs for things like opening and closing a cell, equipment, etc.
- Transfer Stations are conveniently located throughout the Borough
- Operations – cost to run the landfill, 65% contracted

# LOAN REPAYMENT SCHEDULE

	<u>Amount Owed</u>	<u>Annual Payment</u>	<u>Payment End Date</u>
<b>Landfill Expansion (Admin Building)</b>	\$223,414	\$53,805	2028
<b>Regional Resource Recovery Facility</b>	\$360,006	\$54,652	2031
<b>Cell 3 Expansion</b>	\$1,645,956	\$163,433	2034
<b>Cell 4 (est)</b>	\$4,500,000	\$550,000	2035
<b>Cell 2 Closure</b>	\$1,538,939	\$131,180	2037
<b>Septage and Leachate - REPAYMENT START DATE FY26</b>	\$2,500,000	\$110,000	2045

Assumes no new loans are started



# PROPOSED RATE CHANGES

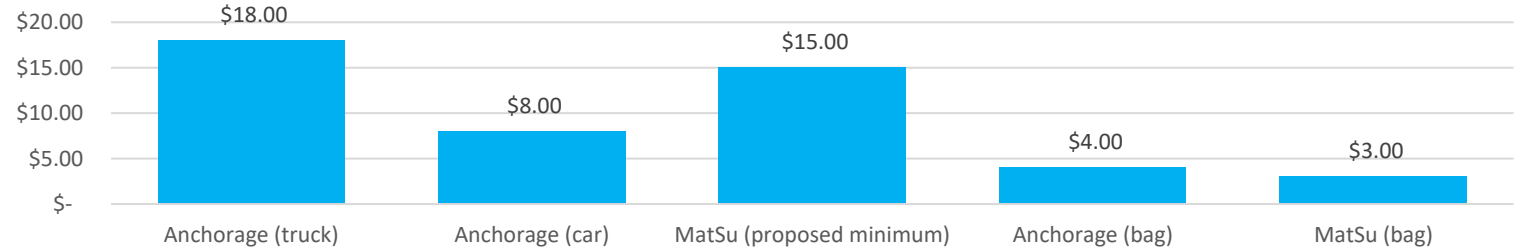
**Existing Rates**

	<b>Existing</b>	<b>Proposed</b>	<b>Notes</b>
MSW	\$142	\$147	No increase the last 2 years - 3.5% proposed increase based on increased fuel, contracts, construction of 8 to 15%
C&D	\$135	\$136	No increase the last 2 years - .07% proposed increase based on increased fuel, contracts, construction of 8 to 15%
Minimum Charge	\$10	\$15	Resume rate from 2021
Bags	\$2	\$3	Resume rate from 2021

# PROPOSED RATE COMPARISON PER TON

- Anchorage will raise rates by 6.25% annually for five years
- Kenai rate is general fund taxed based with the rate estimated at \$180 per ton
- Juneau rate is \$198 per ton
- Fairbanks is a commercial rate of \$132 a ton plus a general fund tax rate for all residents, making the rate approx. \$200 a ton

Per Vehicle and per Bag Rates



Per Ton Rate

