



CAMP

Bogard-Seldon

Matanuska Susitna Borough
Division of Planning

JOINT PLANNING
COMMISSION/ASSEMBLY

MARCH 11, 2025



- Background
 - What is Access Management?
 - Existing Conditions
- Draft CAMP
 - Process
 - Public Participation
- Next Steps
 - Adoption
 - Implementation

What is Access Management?

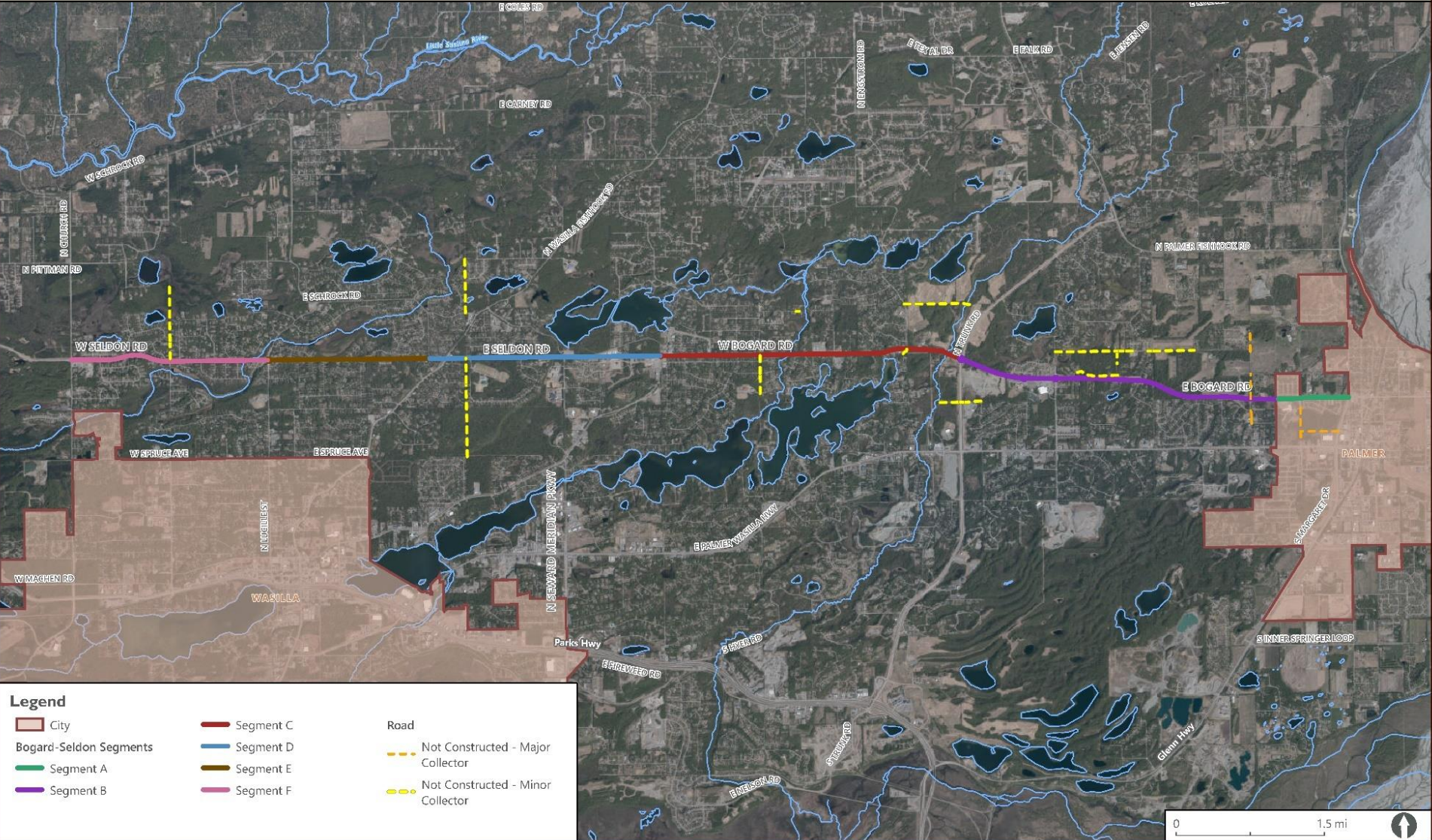
- Identify ways to reduce crashes and improve traffic flow making it safer and easier to use the corridor
- Potential solutions include:
 - Separating basic conflict areas
 - Reducing interference with through traffic
 - Limiting the number of conflict points
 - Managing section line easements
 - Practicing controlled land development

Bogard-Seldon Corridor



BOGARD-SELDON CORRIDOR ACCESS MANAGEMENT PLAN

Project Segments Overview



Bogard-Seldon Corridor

- Important east-west alternative to the Palmer-Wasilla Highway and Parks Highway
- Population growth and land development have significantly increased traffic on the Bogard/Seldon Corridor
- Currently functions as an arterial road which has resulted in congestion and safety concerns

Bogard-Seldon CAMP – Engagement

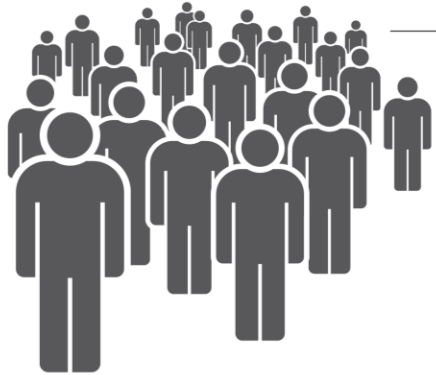
Web Traffic



Mailers



Bogard-Seldon CAMP – Engagement



EVENTS

50
Attendees

OPEN HOUSE

407
Attendees

TRANSPORTATION
FAIR

MEETINGS

10
MEETINGS



Transportation Advisory Board
Joint Planning Commission & Assembly
MVP/MPO
LRSAAB
Community Councils

Bogard-Seldon CAMP – Engagement

MARKETING RESOURCES

Used print, newsletters, and social media for maximum reach.



Outreach Dates: Oct 9 - Dec.3, 2024 & Jan 30 - Feb 28, 2025

Public Comments



Bogard-Seldon CAMP – Revisions

Biggest changes made:

- Removed proposed roadway connecting Sams Drive with N Charley Drive
- Modified access points on north side of Bogard to align with Cottage Hill Drive
- Added a frontage road on the north side of Seldon between N Caribou Street and N Moose Street
- Added an eastbound right turn lane at N Larson Elementary Circle

Bogard-Seldon CAMP – Revisions

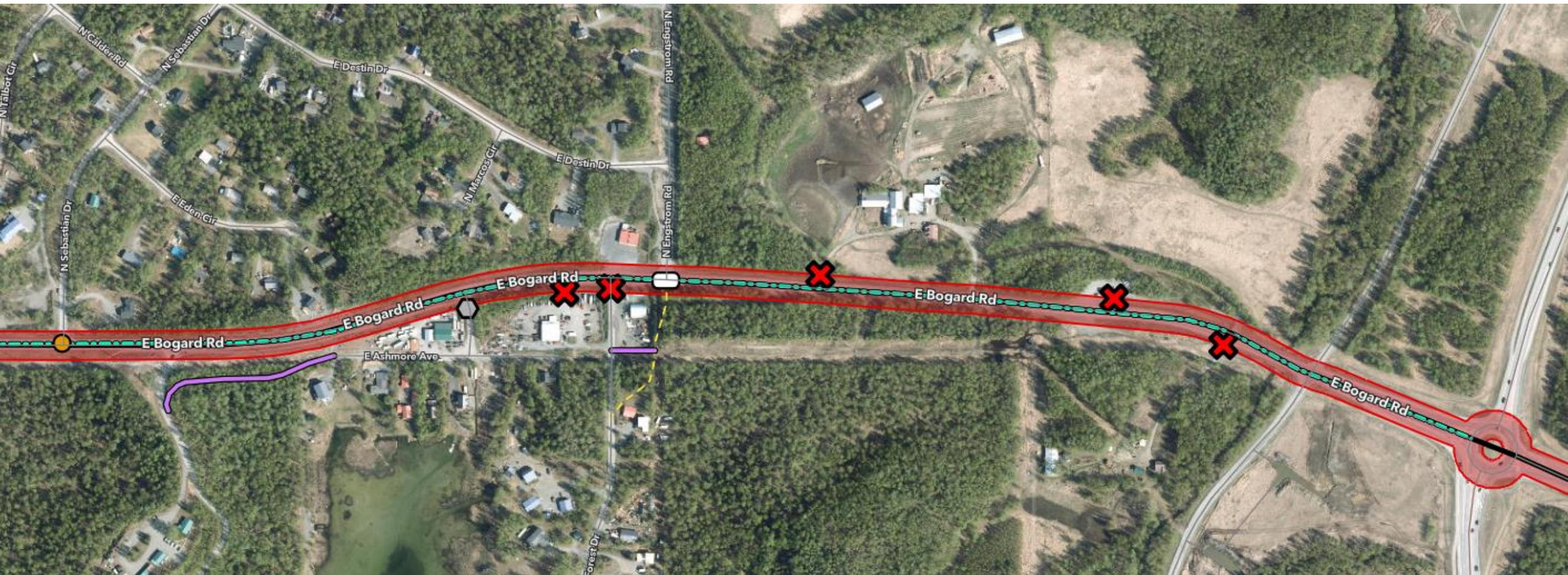
Challenging Spots

- Segment C – most comments received
 - A lot of existing access points
 - Proposed frontage road reduces conflict points but may impact residential parcels
 - Will be further analyzed during design phase
- Realigning N Snow Goose Drive to align with N Hematite Drive
 - Grading and Right-of-way challenges
 - Profile improvements and alignment will be determined during design phase

Bogard-Seldon CAMP – Revisions SEG. B



Bogard-Seldon CAMP – Revisions SEG. C



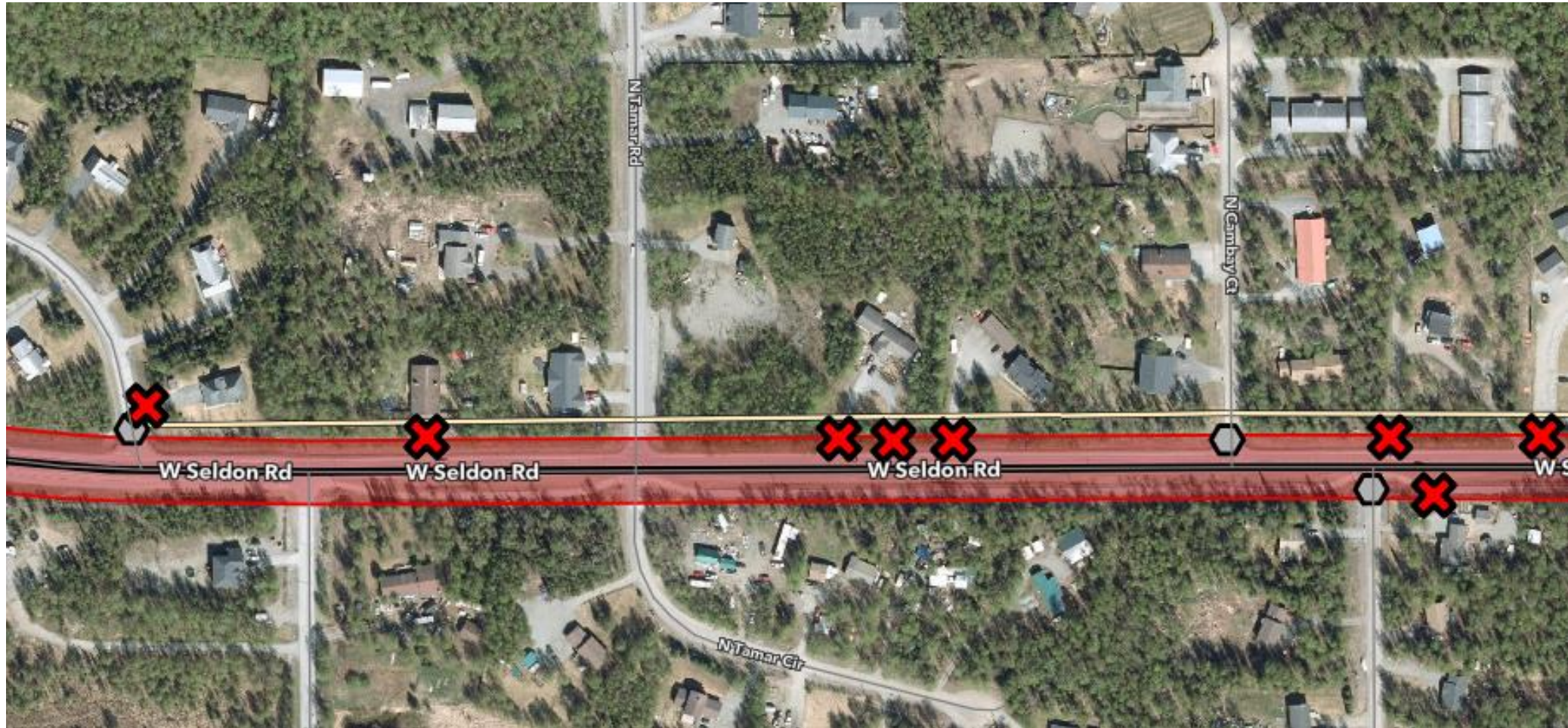
Bogard-Seldon CAMP – Revisions SEG. C



Bogard-Seldon CAMP – Revisions SEG. D/E



Bogard-Seldon CAMP – Revisions SEG. F



Next Steps



ADDRESS PUBLIC
COMMENTS



COMPLETE
ADOPTION DRAFT



PRESENT TO MSB
PLANNING
COMMISSION
AND MSB
ASSEMBLY FOR
ADOPTION



PLAN
IMPLEMENTATION

Questions? - Contact



Julie Spackman

MSB Long Range Planner

907.861.7815

julie.spackman@matsugov.us

Project Website: bogardseldonaccess.matsugov.us

Thank you