



CAMP

Bogard/Seldon

Matanuska Susitna Borough
Division of Planning

**JOINT ASSEMBLY &
PLANNING COMMISSION
MEETING**

OCT. 8, 2024



Bogard Seldon Corridor

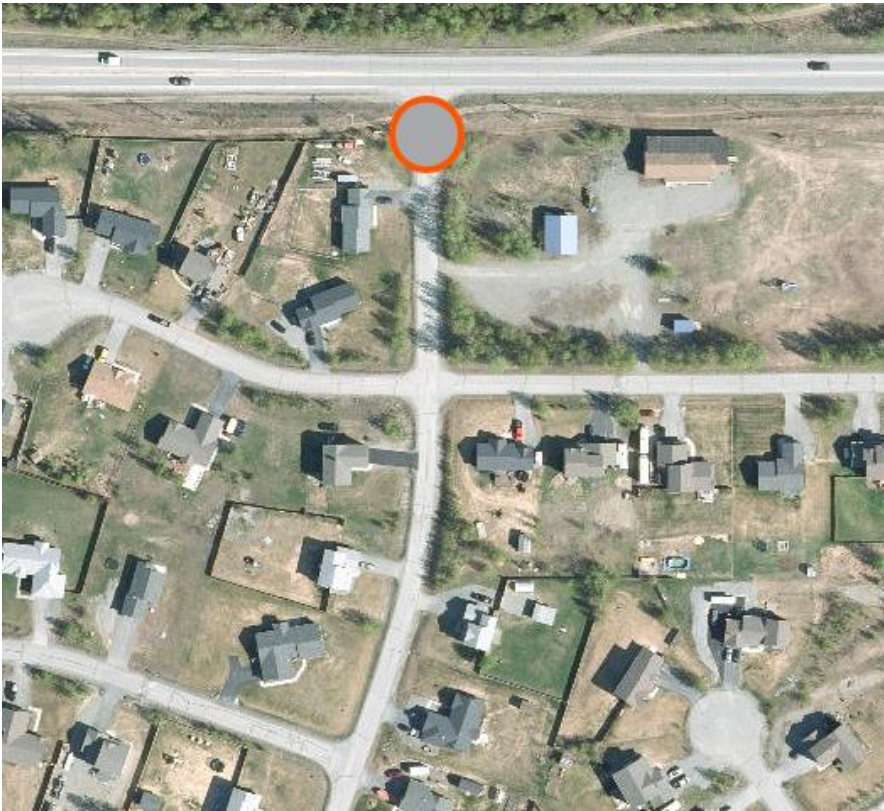
- Important east-west alternative to the Palmer-Wasilla Highway and Parks Highway
- Population growth and land development have significantly increased traffic on the Bogard/Seldon Corridor
- Currently functions as an arterial road which has resulted in congestion and safety concerns

Why develop an Access Management Plan?

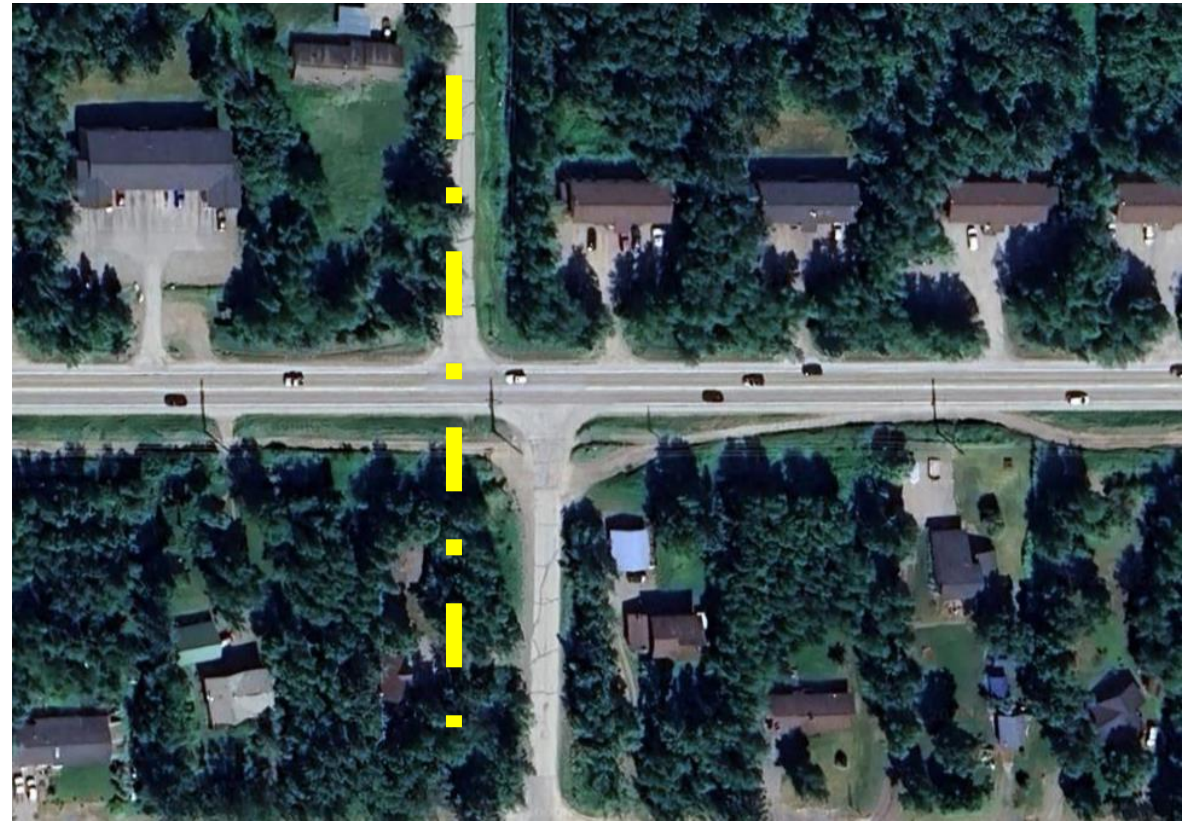
- Identify ways to reduce crashes and improve traffic flow making it safer and easier to use the corridor
- MSB & DOT&PF are developing several projects in the corridor:
 - Bogard Road Reconstruction North Earl Drive to North Engstrom Road
 - Seldon Road Reconstruction, Wasilla-Fishhook Road to Snowgoose Drive
 - Seldon Road Reconstruction, Snowgoose Drive to Lucille Street
 - HSIP: Bogard Road at Engstrom Road/Green Forest Drive

Potential Strategies

Close existing roads with cul-de-sac

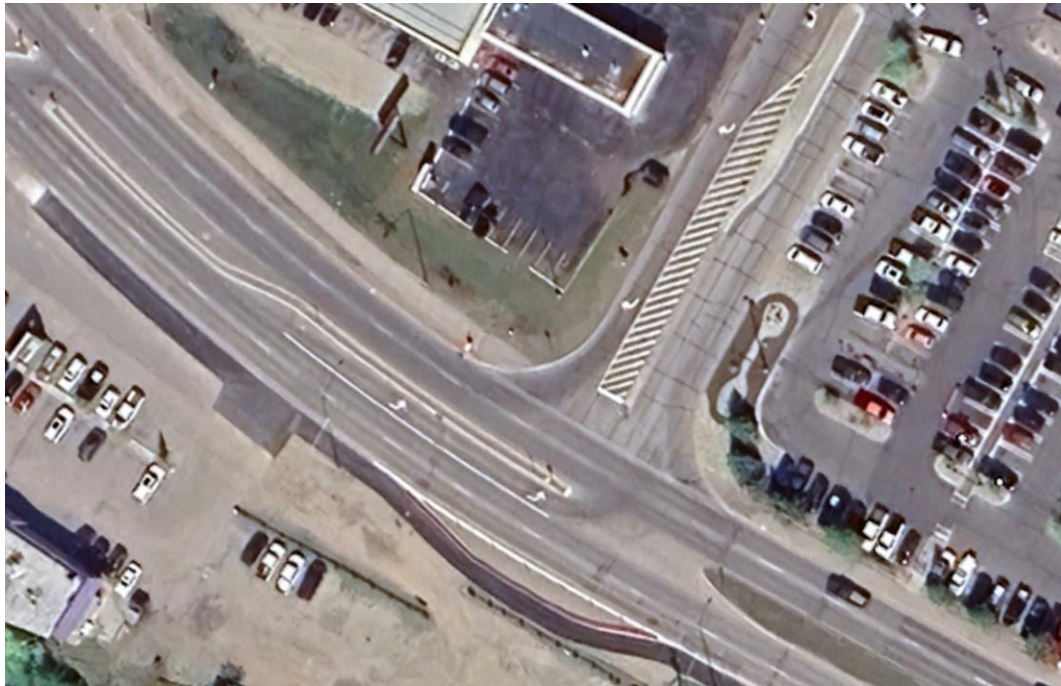


Re-align Intersection



Potential Strategies

Non-traversable medians



Frontage Road



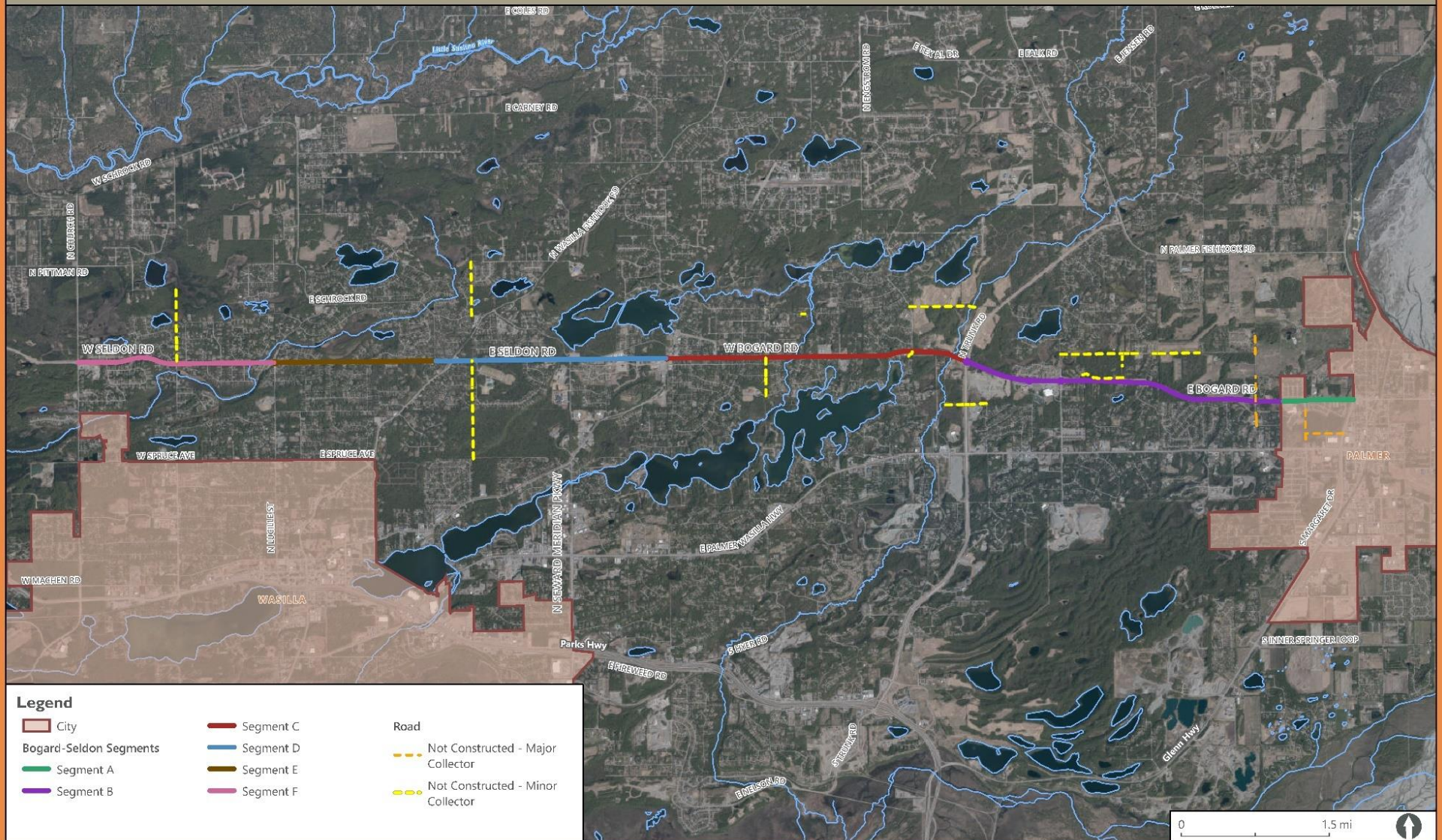
- Other Strategies include:
 - Intersection and driveway spacing
 - Driveway management
 - Limiting the number of new driveways
 - Consolidating existing driveways
 - ROW Acquisition/Donation
 - Future intersection control

Bogard-Seldon CAMP



BOGARD-SELDON CORRIDOR ACCESS MANAGEMENT PLAN

Project Segments Overview

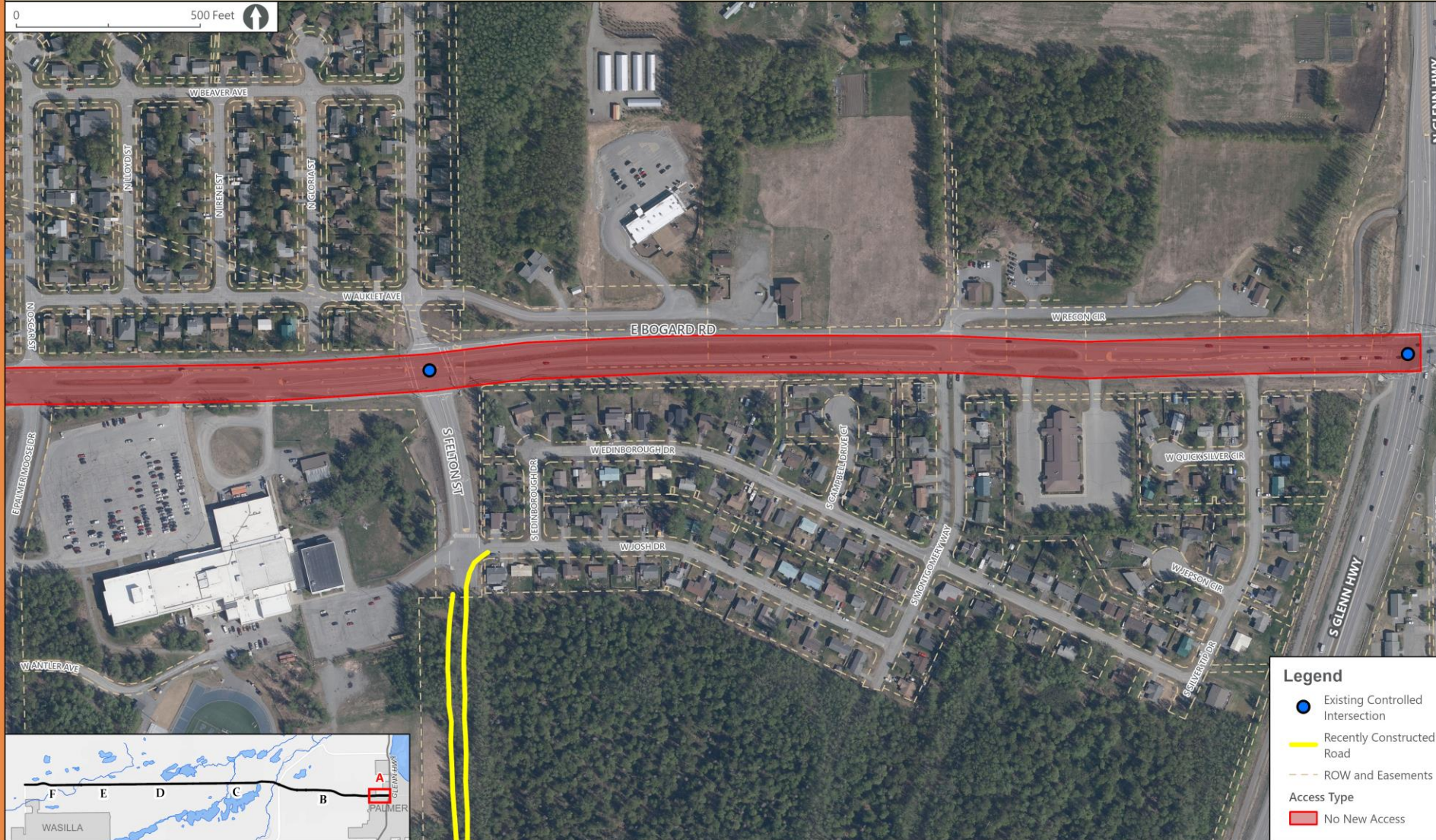


Bogard-Seldon CAMP – Segment A



**BOGARD-SELDON
CORRIDOR ACCESS
MANAGEMENT PLAN**

Segment A: Glenn Highway to Palmer Moose Drive Recommendations

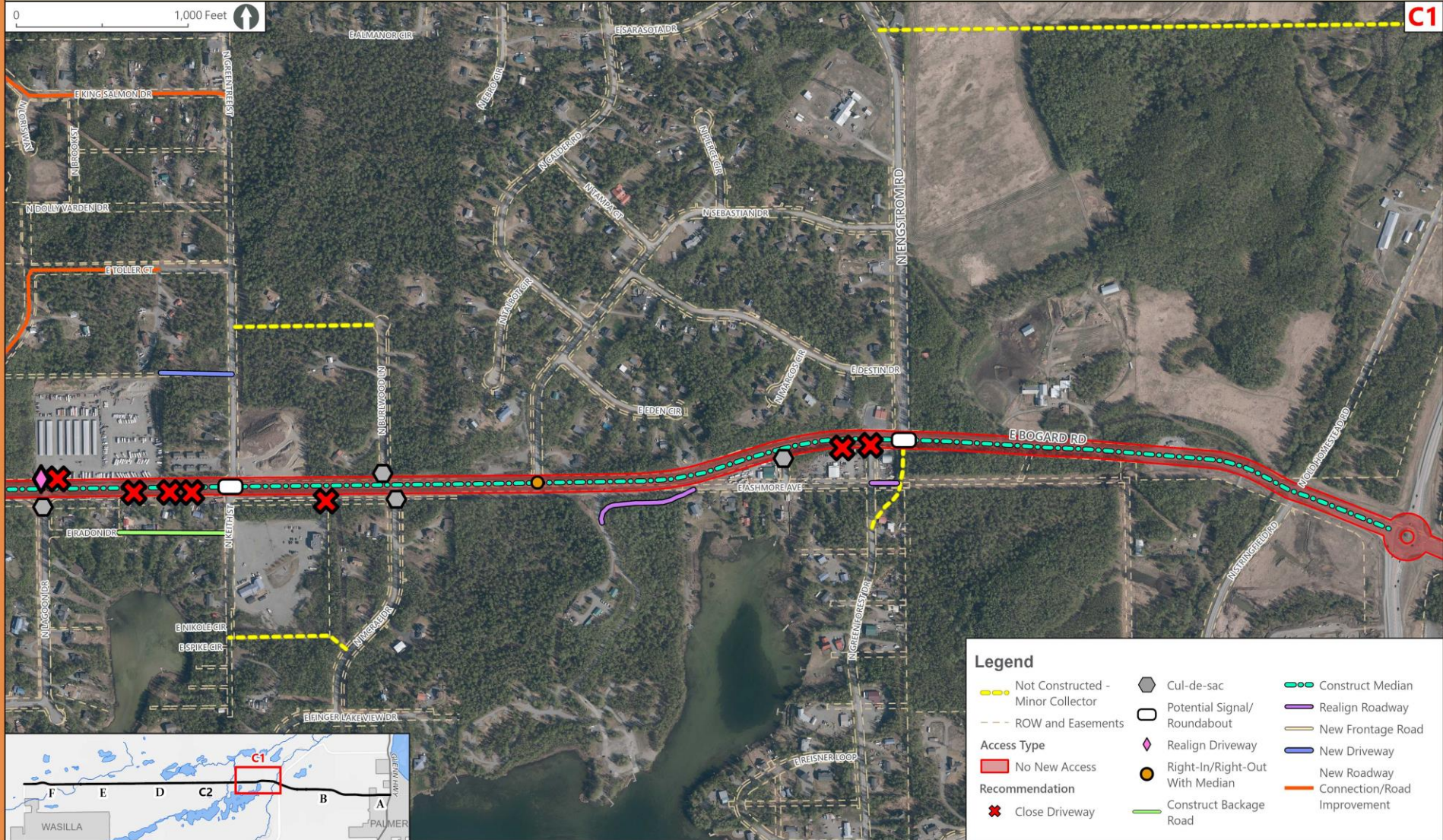


Bogard-Seldon CAMP – Segment C1



**BOGARD-SELDON
CORRIDOR ACCESS
MANAGEMENT PLAN**

Segment C: Trunk Road to Bogard-Seldon Intersection Recommendations

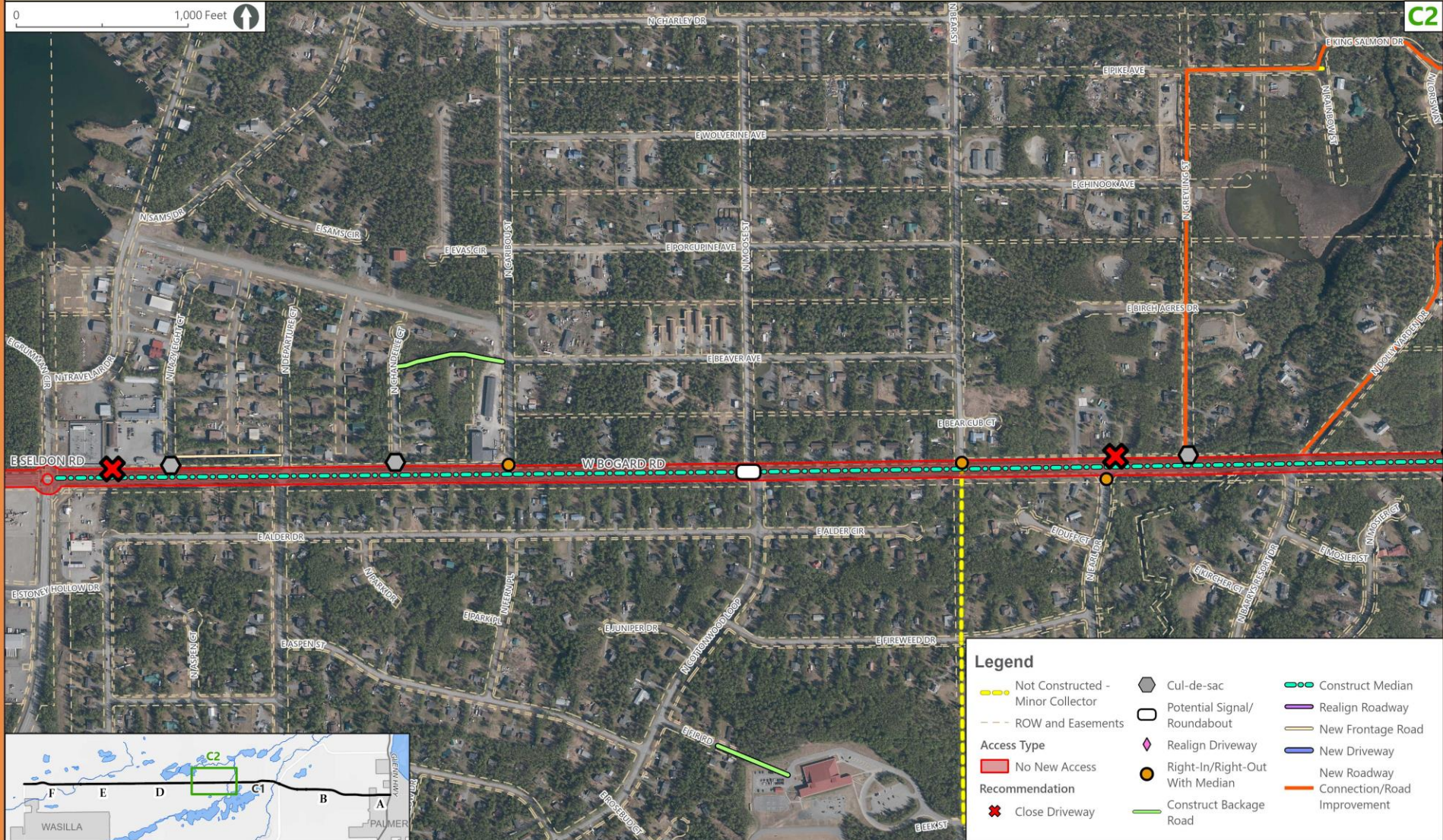


Bogard-Seldon CAMP – Segment C2



**BOGARD-SELDON
CORRIDOR ACCESS
MANAGEMENT PLAN**

Segment C: Trunk Road to Bogard-Seldon Intersection Recommendations



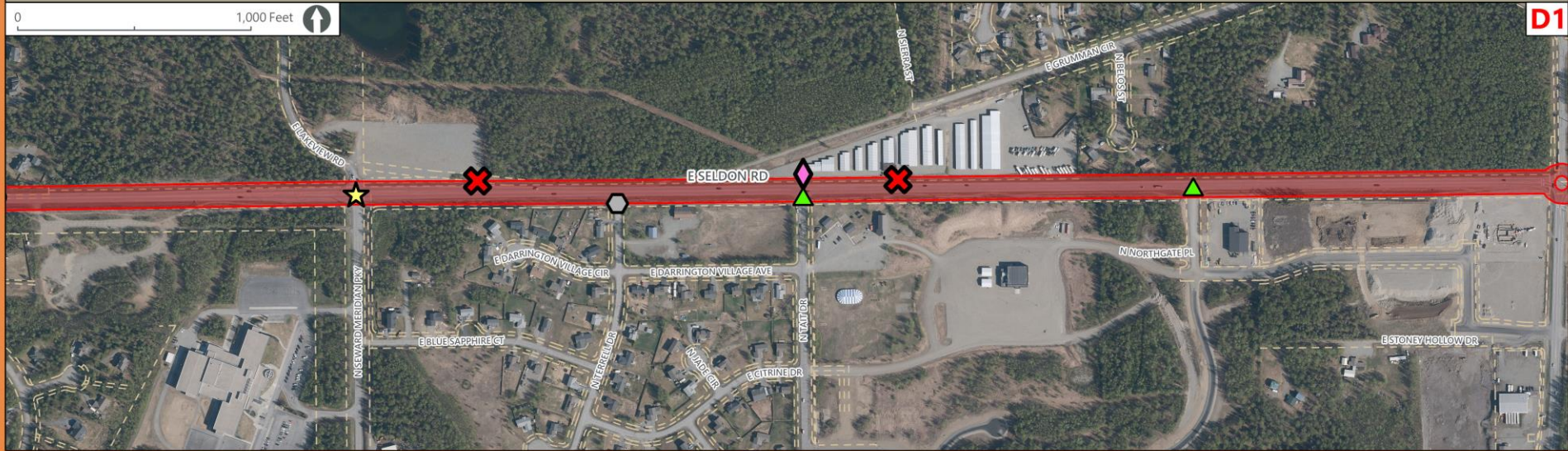
Bogard-Seldon CAMP – Segment D



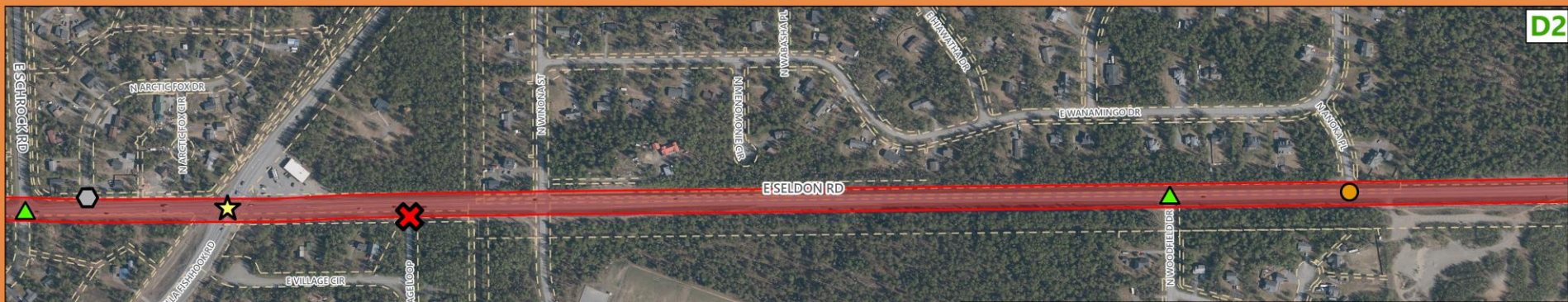
**BOGARD-SELDON
CORRIDOR ACCESS
MANAGEMENT PLAN**

Segment D: Bogard-Seldon Intersection to Schrock Road Recommendations

0 1,000 Feet ↑



D1



D2



Legend

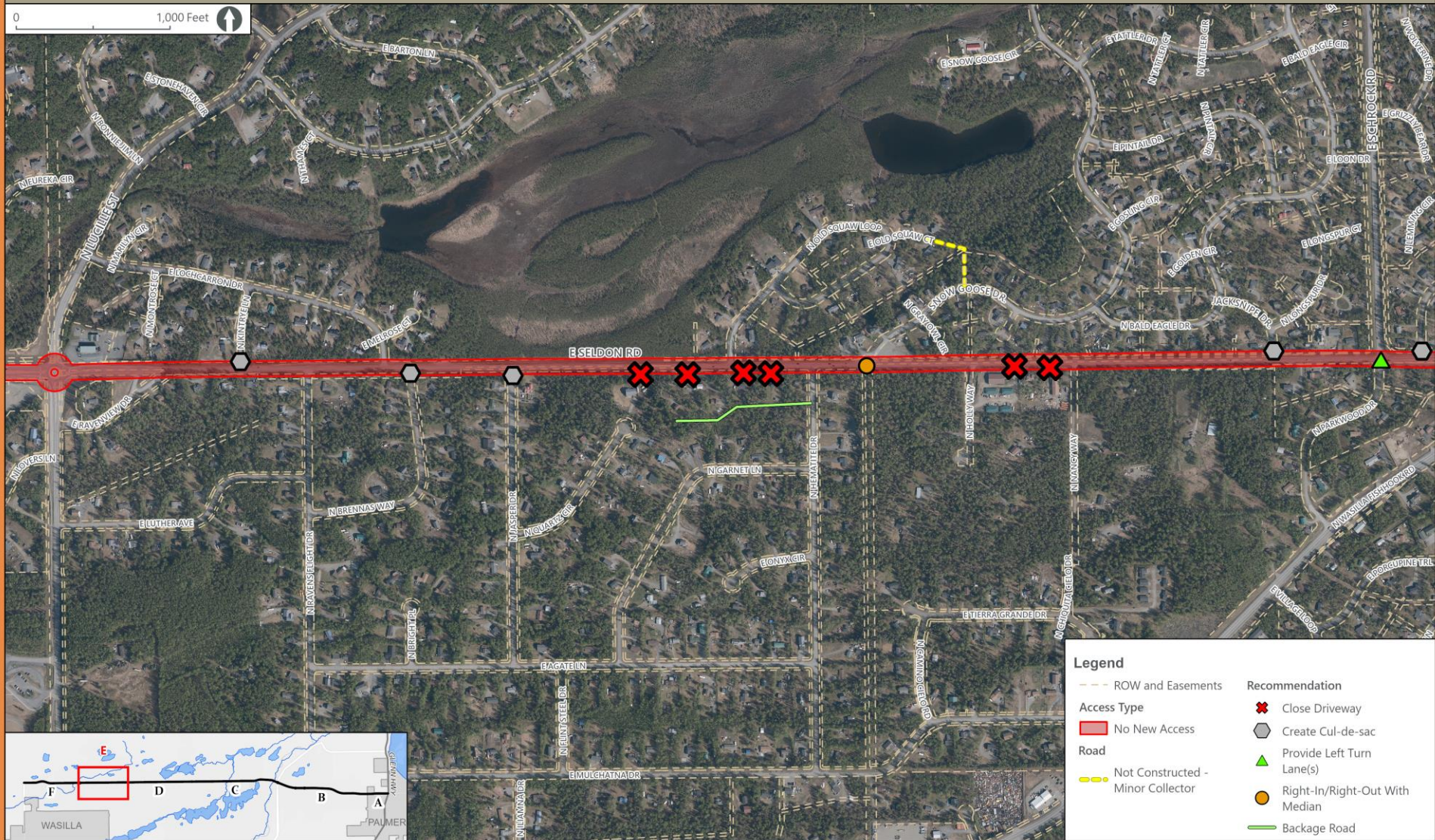
- | | | |
|-----------------------------------|----------------------------------|------------------------------------|
| Not Constructed - Minor Collector | Existing Signalized Intersection | Provide Left Turn Lane(s) |
| ROW and Easements | Recommendation | Future Driveway Realignment |
| Access Type | Close Driveway | New Right-In/Right-Out With Median |
| No New Access | Create Cul-de-sac | |

Bogard-Seldon CAMP – Segment E



**BOGARD-SELDON
CORRIDOR ACCESS
MANAGEMENT PLAN**

Segment E: Schrock Road to Lucille Street Recommendations



Legend

- | | |
|---|----------------------------------|
| --- ROW and Easements | Recommendation |
| Access Type | ✗ Close Driveway |
| Red Line: No New Access | ⬡ Create Cul-de-sac |
| Road | ▲ Provide Left Turn Lane(s) |
| Yellow Dashed Line: Not Constructed - Minor Collector | ● Right-In/Right-Out With Median |
| | — Backage Road |



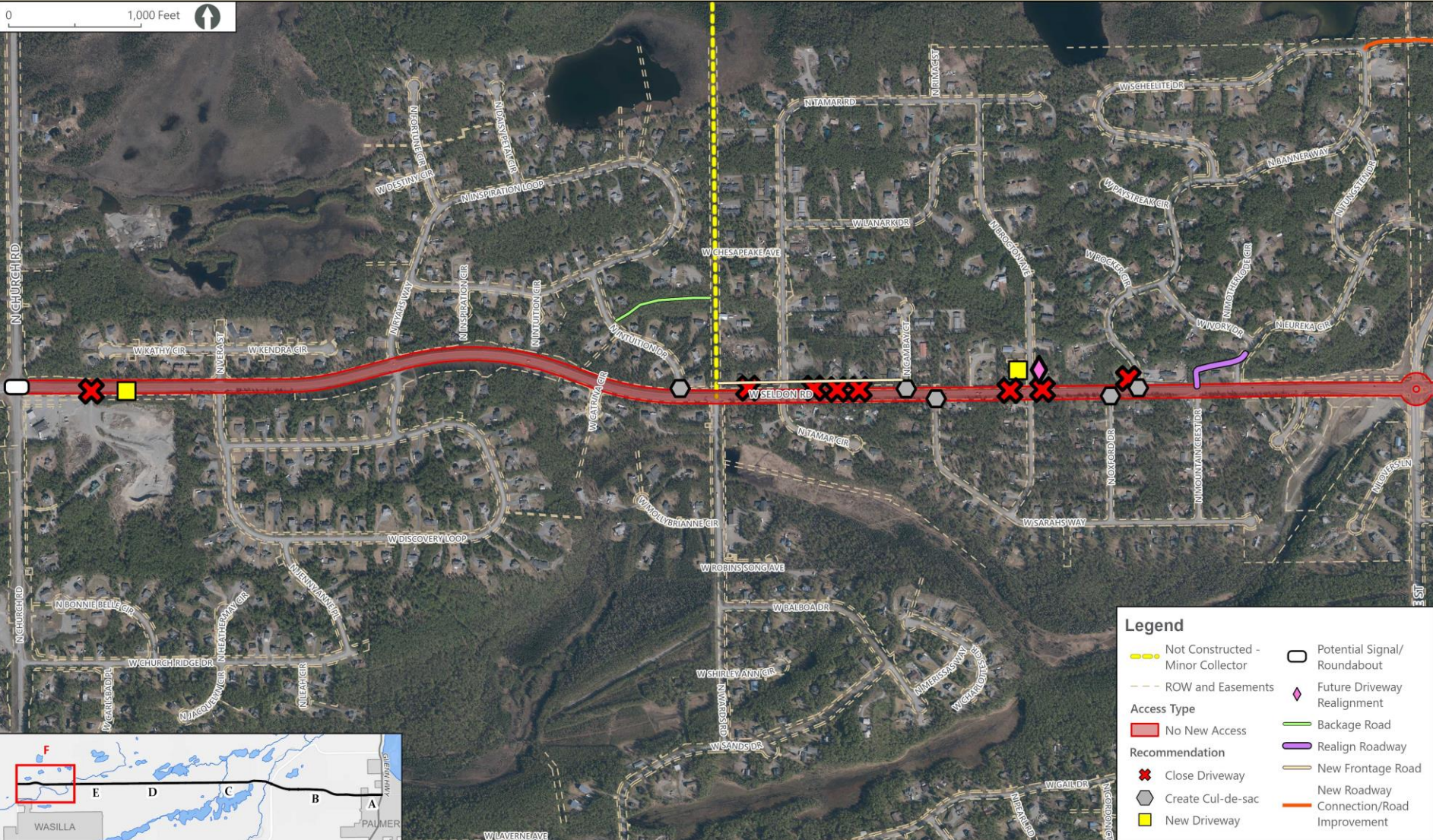
Bogard-Seldon CAMP – Segment F



**BOGARD-SELDON
CORRIDOR ACCESS
MANAGEMENT PLAN**

Segment F: Lucille Street to Church Road Recommendations

0 1,000 Feet



Upcoming Activities

Upcoming Presentations

- North Lakes Community Council
- Gateway Community Council
- Mat-Su Valley Planning – Technical Committee
- Planning Commission & MSB Assembly

Public Open House

- November 6, 2024 5:30-7:30PM
- Matsu-Career & Technical High School

Project Website

- bogardseldonaccess.matsugov.us (going LIVE on 10/9/24)



Julie Spackman

MSB Long Range Planner

907.861.7815

julie.spackman@matsugov.us



Thank you